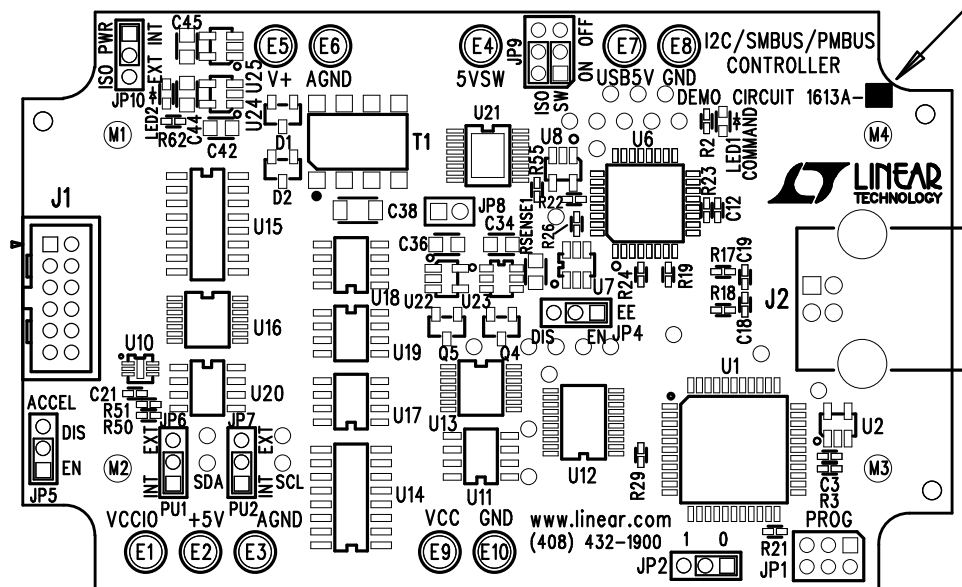



REVISION HISTORY				
ECO	REV	DESCRIPTION	APP. ENG.	DATE
-	2	PRODUCTION	LEO C.	04-19-10



NOTES: UNLESS OTHERWISE SPECIFIED

1. WORKMANSHIP SHALL BE IN ACCORDANCE WITH IPC-A-610.
2. ASSEMBLY PROCESS SHALL INCLUDE: REFLOW SOLDER TOP SIDE SMD.
3. PARTS TO OMIT WILL BE SPECIFIED ON THE BILL OF MATERIALS. LOCATIONS OF OMITTED PARTS SHALL BE FREE OF SOLDER. MASK THE SOLDER STENCIL WHERE SMT PARTS ARE OMITTED.
4. INSTALL SHUNTS AS SHOWN.
5. DEPANELIZE BOARDS AFTER ASSEMBLY AND ROUTE-OUT THE BREAKOUT TABS ON FOUR SIDES OF THE BOARD EDGE.
6. DO NOT APPLY ANY KIND OF ASSEMBLY STAMP OR QA STAMP TO ANY BOARD.
7. THERE ARE 2 ASSEMBLY VERSIONS FOR THIS DESIGN: -A AND -B PLEASE SEE BILL OF MATERIALS TO MARK EACH VERSION CORRECTLY BY BLACK PERMANENT MARKER.

APPROVALS		 <div> 1630 MCCARTHY BLVD MILPITAS, CA 95035 PH: (408)432-1900 www.linear.com LTC CONFIDENTIAL- FOR CUSTOMER USE ONLY </div>		
PCB DES.	KT			
APP ENG.	LEO C.	TITLE: TOP ASSEMBLY DRAWING		
		I2C/SMBUS/PMBUS CONTROLLER		
		SIZE	IC NO.	REV.
		N/A	DEMO CIRCUIT 1613A	2
SCALE = NONE		FILENAME: DC1613A-2.PCB		SHT 1 OF 2