

REVISION HISTORY			
ECO	REV	DESCRIPTION	APPROVAL
	3	PRODUCTION	KEITH S.
			DATE
			05/17/10



• BOOST, FLYBACK, SEPIC AND INVERTING CONVERTER WITH 5A, 40V SWITCH

LT3957EUHE DEMO CIRCUIT 1544A

E5 SYNC



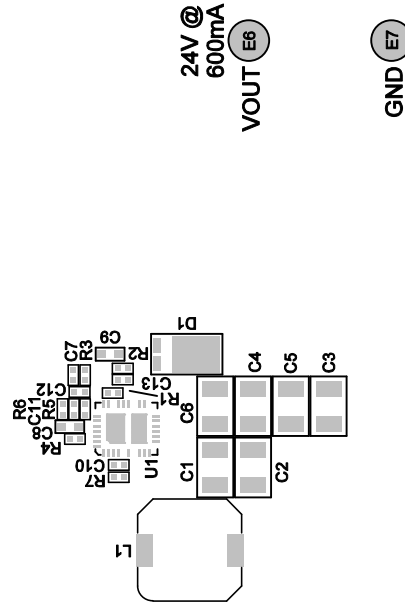
E9 SGND

E3 VIN
4.5V - 20V

E4 GND

GND
E10

LTC CONFIDENTIAL - FOR CUSTOMER USE ONLY



NOTES: UNLESS OTHERWISE SPECIFIED,

1. WORKMANSHIP SHALL BE IN ACCORDANCE WITH IPC-A-610.
2. ASSEMBLY PROCESS SHALL INCLUDE: REFLOW SOLDER TOP SIDE SMD.
3. PARTS TO OMIT WILL BE SPECIFIED ON THE BILL OF MATERIALS. LOCATIONS OF OMITTED PARTS SHALL BE FREE OF SOLDER. MASK THE SOLDER STENCIL WHERE SMT PARTS ARE OMITTED.
4. INSTALL SHUNTS AS SHOWN ON ASSY DRAWING.
5. DEPANELIZE BOARDS AFTER ASSEMBLY AND ROUTE-OUT THE BREAKOUT TABS ON FOUR SIDES OF THE BOARD EDGE.
6. DO NOT APPLY ANY KIND OF ASSEMBLY STAMP OR QA STAMP TO ANY BOARD.

APPROVALS		LINEAR TECHNOLOGY	
PCB DES.	MI	1630 MCCARTHY BLVD MILPITAS, CA 95035 PH: (408)432-1900 www.linear.com LTC CONFIDENTIAL- FOR CUSTOMER USE ONLY	
APP. ENG.	KEITH S.	TITLE: TOP ASSEMBLY DRAWING, BOOST, FLYBACK, SEPIC AND INVERTING CONVERTER WITH 5A, 40V SWITCH	
		SIZE	IC NO
		N/A	LT3957EUHE
		REV	3
		DEMO CIRCUIT 1544A	
SCALE: NONE		FILENAME: 1544A-3.PCB	
		SHT 1 of 1	

TOP SILKSCREEN