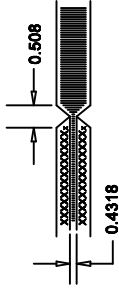


REVISION HISTORY			
ECO	REV	DESCRIPTION	APPROVAL
	3	PRODUCTION	K. Szolnaita
			DATE
			05/05/10

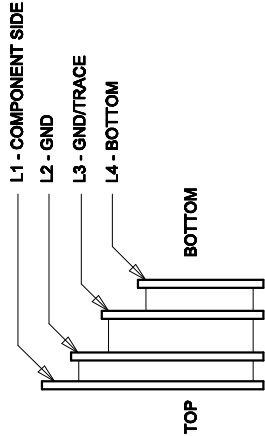
NOTES: UNLESS OTHERWISE SPECIFIED,

1. FAB PER IPC-A-600
2. MATERIAL: -EPOXY FIBERGLASS, NEMA GRADE FR-4
-FINISHED THICKNESS TO BE 1.6 +/- 0.127
-TOTAL OF 6 LAYERS WITH 2 OZ. CU ON THE OUTER LAYERS AND 1 OZ. CU ON THE INNER LAYERS.
-FLAMMABILITY RATING: 94 V-0 MINIMUM.
3. SIZE: CUT TO DIMENSIONS AND TOLERANCES SHOWN.
0.00" ARE PRIMARY DATUMS.
4. DRILLING: DRILL HOLES PER SCHEDULE PLATE THROUGH HOLES WITH COPPER, 0.0254 THICK MIN.
ALL HOLE SIZES ARE SPECIFIED AFTER PLATING.
HOLE LOCATION TOLERANCES ARE +/-0.0762 IN RELATION TO CENTER
5. FINISH: -SMOBC USING LPI BOTH SIDES, COLOR GREEN.
-GOLD IMMERION BOTH SIDES.
-SILKSCREEN BOTH SIDES WITH WHITE NON-CONDUCTIVE INK.
6. DO NOT ALTER ARTWORK e.g. TO ADD LOGO OR DATE CODE.
PAD SIZE CAN BE MODIFIED TO MEET END FINISH.
7. PCB SHALL BE RoHS COMPLIANT.
8. SCORING:

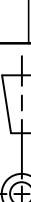



COMPONENT SIDE SHOWN

SIZE	QTY	SYM	PLATED	TOL
0.2032	13	⊠	YES	+/-0.08
0.254	33	⊗	YES	+/-0.08
0.9	3	⊠	YES	+/-0.08
1.8	2	□	NO	+/-0.13
2.4	10	◇	YES	+/-0.13



LAYER CONSTRUCTION

<div>UNLESS OTHERWISE SPECIFIED DIMENSIONS ARE IN MILLIMETERS TOLERANCES ON ANGLE ±1° XX ± 0.254 XXX ± 0.127 INTERPRET DIM AND TOL PER ASME Y14.5M-1994 THIRD ANGLE PROJECTION</div> <div></div>		APPROVALS		<div><div>1600 MCARDY RD MAYFIELD CA 94568 PH: (925)832-1600 WWW.LINEAR.COM LTC CONFIDENTIAL- FOR CUSTOMER USE ONLY</div></div> <div>TITLE: FABRICATION DRAWING, BOOST, FLYBACK, SEPIC AND INVERTING CONVERTER WITH 5A, 40V SWITCH</div>			
		PCB DES.	MI				
		APP. ENG.	KEITH S.				
DO NOT SCALE DRAWING		SCALE: NONE	FILENAME: 1544A-3.PCB				SHT 1 of 1
		SIZE	IC NO	REV			
		N/A	LT3957EUHE	3			
		DEMO CIRCUIT 1544A					

LINEAR
TECHNOLOGY

1850 MCCARTHY BLVD
MILPITAS, CA 95038
PH: (408) 435-1000
WWW.LINEAR.COM
© 2005 LINEAR
FOR CUSTOMER USE ONLY

TITLE: FABRICATION DRAWING,
BOOST, FLYBACK, SEPIC AND INVERTING
CONVERTER WITH 5A, 40V SWITCH