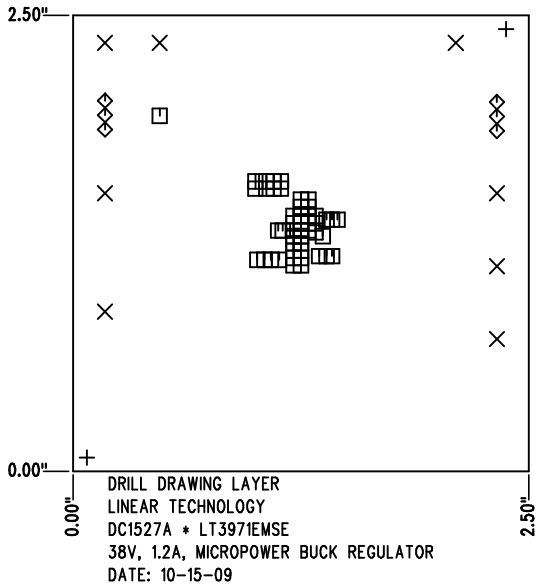
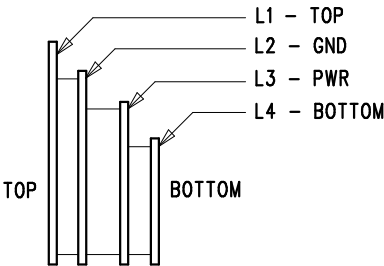


REVISION HISTORY				
ECO	REV	DESCRIPTION	APPR	DATE
1	1	PRODUCTION	M. ZHU	10-15-09

SHOWN FROM COMPONENT SIDE



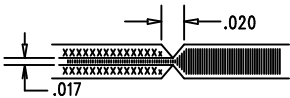
LAYER STRUCTURE




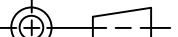
SIZE	QTY	SYM	PLATED	TOL
0.07	2	+	NO	+/-0.003"
0.094	8	X	YES	+/-0.003"
0.012	48	□	YES	+/-0.003"
0.035	6	◇	YES	+/-0.003"

NOTES: UNLESS OTHERWISE SPECIFIED

- FAB PER IPC-A-600.
- MATERIAL: -EPOXY FIBERGLASS, NEMA GRADE FR-4  
-FINISHED THICKNESS TO BE 0.062" +/- .005"  
-TOTAL OF 4 LAYERS WITH 2 OZ. CU ON THE OUTER LAYERS AND 1 OZ. CU ON THE INNER LAYERS.  
-FLAMMABILITY RATING: 94 V-0 MINIMUM.
- SIZE: CUT TO DIMENSIONS AND TOLERANCES SHOWN.  
0.00" ARE PRIMARY DATUMS.
- DRILLING: -DRILL HOLES PER SCHEDULE. PLATE THROUGH HOLES WITH COPPER, 0.001" THICK MIN.  
-ALL HOLE SIZES ARE SPECIFIED AFTER PLATING.  
-HOLE LOCATION TOLERANCES ARE +/-0.003" IN RELATION TO CENTER
- FINISH: -SMOBC USING LPI BOTH SIDES, COLOR GREEN.  
-GOLD IMMERSION BOTH SIDES.  
(LEAD FREE SOLDER CAN BE USED FOR PROTOTYPE)  
-FOR SILKSCREEN: BOTH SIDES USE WHITE NON-CONDUCTIVE INK.
- DO NOT ALTER ARTWORK e.g. TO ADD LOGO OR DATE CODE.  
PAD SIZE CAN BE MODIFIED TO MEET END FINISH.
- PCBS ARE TO BE RoHS COMPLIANT.
- SCORING FOR PANELIZED PCB:



UNLESS OTHERWISE SPECIFIED DIMENSIONS ARE IN INCHES TOLERANCES ON ANGLE ±1° 0.XX" = ±0.01" 0.XXX" = ±0.005" INTERPRET DIM AND TOL PER ASME Y14.5M-1994	APPROVALS			 <b>LINEAR TECHNOLOGY</b>	1630 MCCARTHY BLVD MILPITAS, CA 95035 PH: (408)432-1900 LTC CONFIDENTIAL - FOR CUSTOMER USE ONLY		
		INIT	DATE				
	PCB DES.	K. TRAN	10-15-09	TITLE: FABRICATION DRAWING			
	ENG.	M. ZHU	10-15-09				
	THIRD ANGLE PROJECTION			38V, 1.2A, MICROPOWER BUCK REGULATOR			

			SIZE A		IC NO. LT3971EMSE DEMO CIRCUIT 1527A	REV. 1
---	--	--	-----------	--	---	-----------

DO NOT SCALE DRAWING	SCALE: NONE	FILENAME: DC1527A.PCB	SHT 1 of 1
----------------------	-------------	-----------------------	------------