

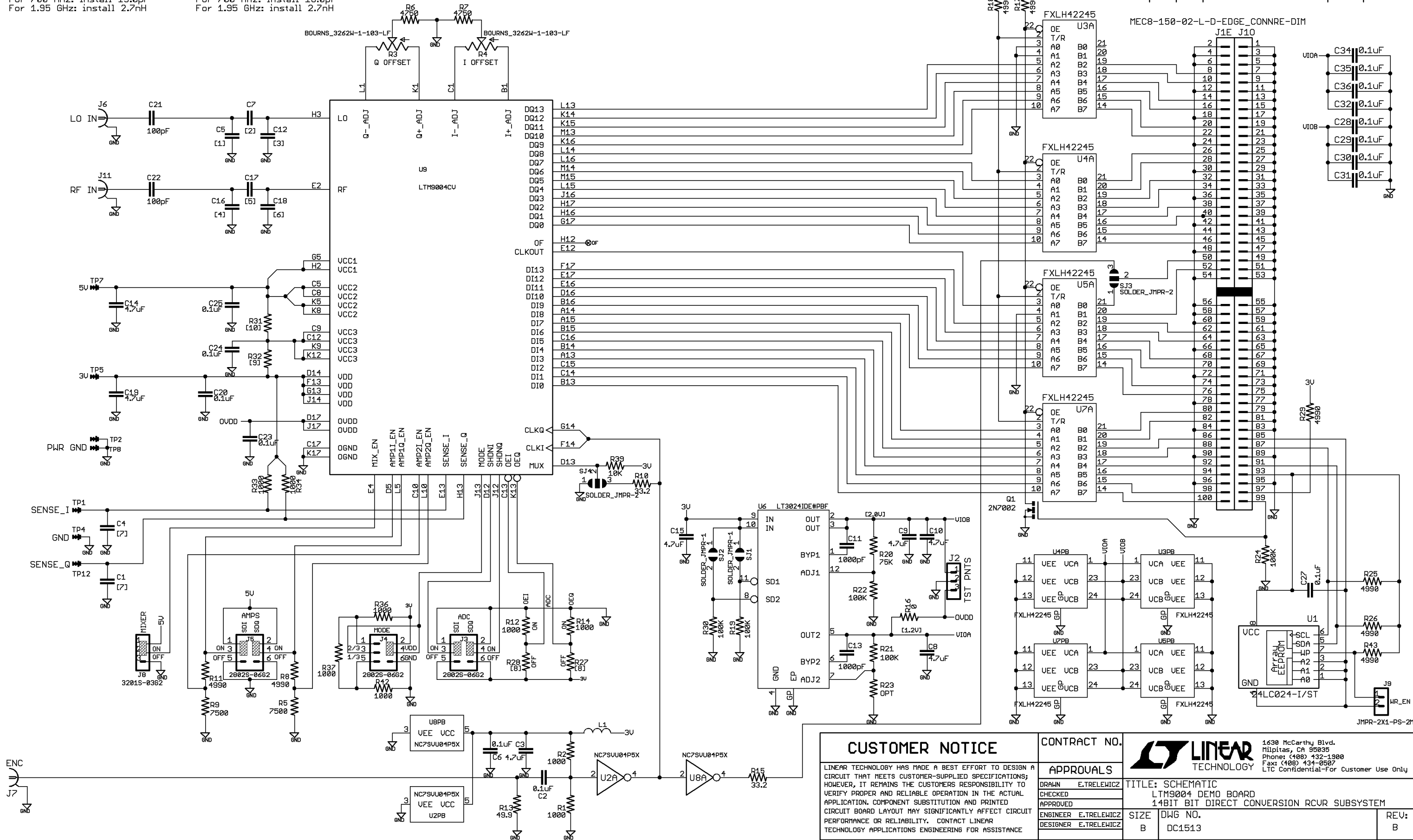
C5:
For 700 MHz: install 6.8pF
For 1.95 GHz: install 1.5pF

C16:
For 700 MHz: install 8.2pF
For 1.95 GHz: install 1.8pF

C7:
For 700 MHz: install 15.0pF
For 1.95 GHz: install 2.7nH

C17:
For 700 MHz: install 18.0pF
For 1.95 GHz: install 2.7nH

REVISION HISTORY				
ECO	REV	DESCRIPTION	DATE	APPROVED
	A1	INITIAL RELEASE	28JAN09	
	B1	UCC3 SUPPLY OPTION	28SEP09	



CUSTOMER NOTICE

LINEAR TECHNOLOGY HAS MADE A BEST EFFORT TO DESIGN A CIRCUIT THAT MEETS CUSTOMER-SUPPLIED SPECIFICATIONS; HOWEVER, IT REMAINS THE CUSTOMERS RESPONSIBILITY TO VERIFY PROPER AND RELIABLE OPERATION IN THE ACTUAL APPLICATION. COMPONENT SUBSTITUTION AND PRINTED CIRCUIT BOARD LAYOUT MAY SIGNIFICANTLY AFFECT CIRCUIT PERFORMANCE OR RELIABILITY. CONTACT LINEAR TECHNOLOGY APPLICATIONS ENGINEERING FOR ASSISTANCE

THIS CIRCUIT IS PROPRIETARY TO LINEAR TECHNOLOGY AND SUPPLIED FOR USE WITH LINEAR TECHNOLOGY PARTS

CONTRACT NO.

APPROVALS

DRAWN	E.TRELEWICZ
CHECKED	
APPROVED	
ENGINEER	E.TRELEWICZ
DESIGNER	E.TRELEWICZ

FILENAME: DC1513B

TITLE: SCHEMATIC

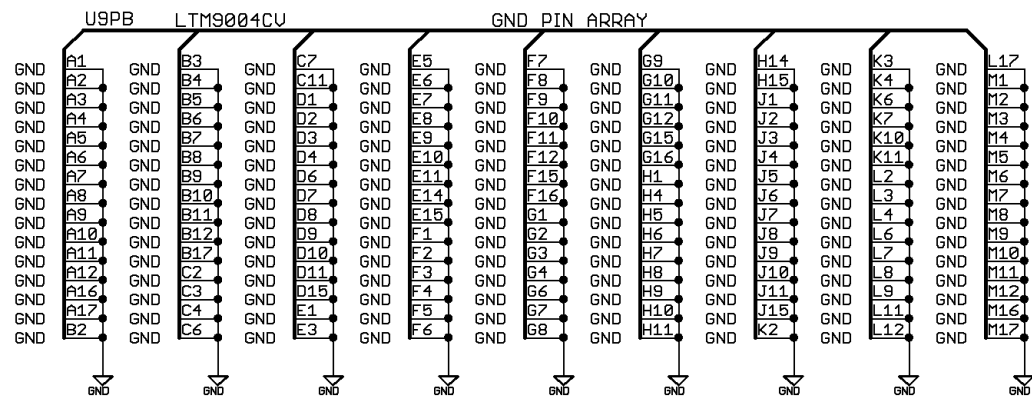
LTM9004 DEMO BOARD
14BIT BIT DIRECT CONVERSION RCUR SUBSYSTEM

SIZE	DWG NO.	REV:
B	DC1513	B


DATE: 9/22/2010 01:03:09p

1630 McCarthy Blvd.
Milpitas, CA 95035
Phone: (408) 432-1900
Fax: (408) 434-0507
LTC Confidential-For Customer Use Only

SHEET 1 OF 2



Assy.	U9	R5	R9	R31	R32
-AA	LTM9004-AA	DNI	DNI	0 ohm	DNI
-AB	LTM9004-AB	DNI	DNI	0 ohm	DNI
-AC	LTM9004-AC	7.5K ohm	7.5K ohm	DNI	0 ohm
-AD	LTM9004-AD	7.5K ohm	7.5K ohm	DNI	0 ohm

CUSTOMER NOTICE		CONTRACT NO.	 <div>1630 McCarthy Blvd. Milpitas, CA 95035 Phone: (408) 432-1900 Fax: (408) 434-0507 LTC Confidential-For Customer Use Only</div>	
LINEAR TECHNOLOGY HAS MADE A BEST EFFORT TO DESIGN A CIRCUIT THAT MEETS CUSTOMER-SUPPLIED SPECIFICATIONS; HOWEVER, IT REMAINS THE CUSTOMERS RESPONSIBILITY TO VERIFY PROPER AND RELIABLE OPERATION IN THE ACTUAL APPLICATION. COMPONENT SUBSTITUTION AND PRINTED CIRCUIT BOARD LAYOUT MAY SIGNIFICANTLY AFFECT CIRCUIT PERFORMANCE OR RELIABILITY. CONTACT LINEAR TECHNOLOGY APPLICATIONS ENGINEERING FOR ASSISTANCE.		APPROVALS	TITLE: SCHEMATIC LTM9004 DEMO BOARD 14BIT BIT DIRECT CONVERSION RCUR SUBSYSTEM	
		DRAWN	SIZE	DWG NO.
		CHECKED	B	DC1513
		APPROVED	REV: B	
		ENGINEER		
		DESIGNER		
THIS CIRCUIT IS PROPRIETARY TO LINEAR TECHNOLOGY AND SUPPLIED FOR USE WITH LINEAR TECHNOLOGY PARTS		FILENAME: DC1513B	DATE: 9/22/2010 01:03:09p	
			SHEET 2 OF 2	