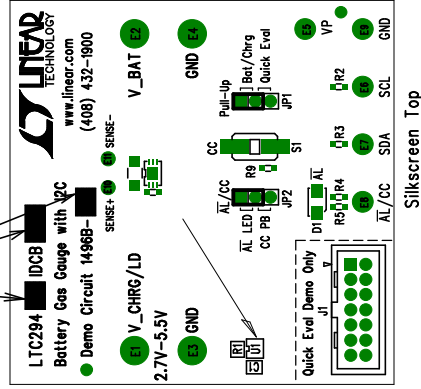


- MARK VERSION AND IC INFO PER BOM




NOTES :

1. Unused SMD components should be free of Solder.
2. Fill up all vias with solder.

Install Shunts: JP2 = $\overline{\text{AL}}$ LED
JP1 = Bat/Chrg

Assembly Top Drawing

APPROVALS						1630 McCarthy Blvd. Milpitas, CA 95035 PH: (408)432-1900	
	INIT	DATE		LTC294XIDCB Battery Gas Gauge with I2C			
DRAWN	KL						
CHECK							
DESIGN							
ENGR							
				SIZE	A	Demo Circuit 1496B	REV. 1
SCALE = NONE						SHT 1 of 1	