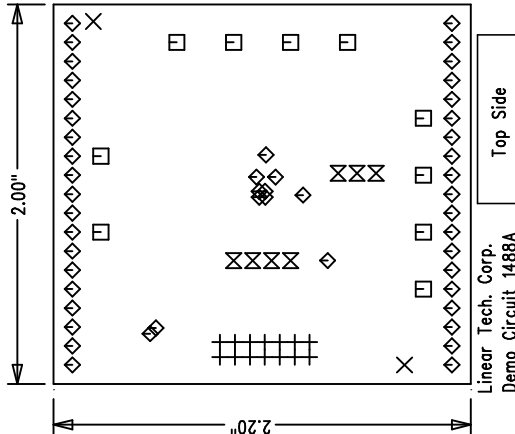
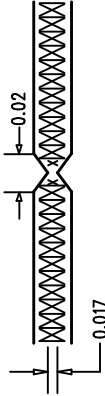


REVISIONS			
REV	DESCRIPTION	APPR	DATE

NOTES : Unless Otherwise Specified

1. FAB PER IPC-A-600.
2. MATERIAL: EPOXY FIBERGLASS, NEMA GRADE FR-4.
2 OZ. COPPER FINISH ON OUTER LAYERS.
1 OZ. COPPER FINISH ON INNER LAYERS.
THICKNESS .062 +/--.006 TOTAL OF 4 LAYERS.
FLAMMABILITY RATING: 94 V-0 MINIMUM .
3. SIZE: DIMENSIONS SHOWN AND TOLERANCES TOL: +/--.010
0.000 ARE PRIMARY DATUMS.
4. DRILLING: DRILL HOLES PER SCHEDULE. PLATE THROUGH
HOLES WITH COPPER, .001 INCH THICK MIN. ALL
HOLE SIZES ARE SPECIFIED AFTER PLATING.
5. FINISH: SMOBC USING LPI BOTH SIDES COLOR GREEN.
IMMERSION GOLD PLATING
6. SILKSCREEN : BOTH SIDES USING WHITE NON-CONDUCTIVE EPOXY INK.
7. DO NOT ALTER ARTWORK TO ADD LOGO OR DATE CODE.
BUT YOU MAY MODIFY PAD SIZE TO MEET END FINISH.
8. PCBs ARE TO BE RoHS COMPLIANT.
9. SCORING:



Fabrication Drawing

SIZE	QTY	SYM	PLATED	TOL
0.07	2	X	NO	+/--.003
0.095	10	□	YES	+/--.003
0.01	49	◇	YES	+/--.003
0.035	7	⊠	YES	+/--.003
0.03543	14	+	YES	+/--.003

UNLESS OTHERWISE SPECIFIED
DIMENSIONS ARE IN INCHES
TOLERANCES ON ANGLE ± 1
2 PLACE ±.01 3 PLACE ±.005
INTERPRET DIM AND TOL
PER ASME Y14.5M - 1994

APPROVALS		LINEAR TECHNOLOGY	
DRAWN	INT	DATE	1630 McCarthy Blvd. Milpitas, CA 95035 PH: (408)432-1900
CHECK			
DESIGN	Helen	10/9/08	TITLE: LT02634CUD-LZ12/LM12/HZ12/HM12 Quad
ENGR	Leo Chen	10/9/08	12-Bit Rail-to-Rail DAC with Bidirectional Reference
			SIZE A DEMO DC1488A-A/B/C/D REV. A
			SCALE = NONE DES-250 SHEET 1 of 1