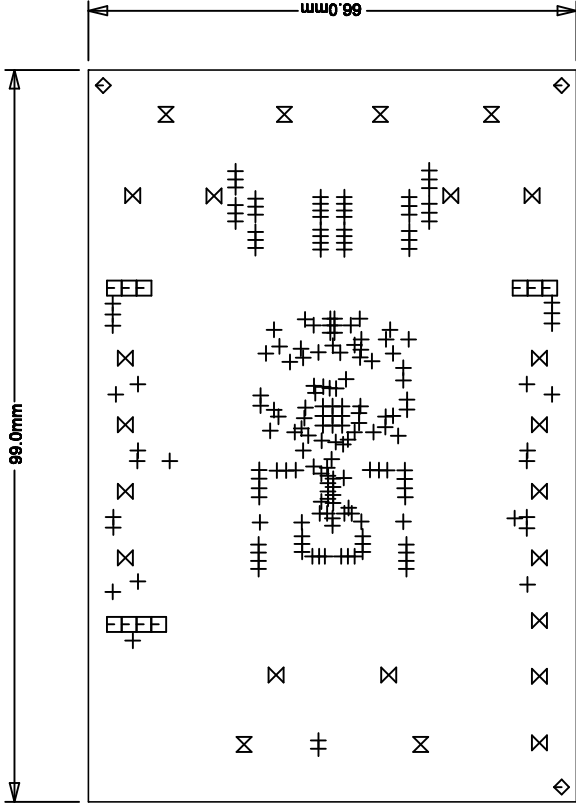
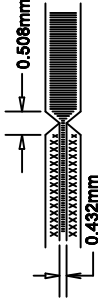


REVISION HISTORY			
ECO	REV	DESCRIPTION	DATE
	2	PROD	08/25/09

NOTES: UNLESS OTHERWISE SPECIFIED,

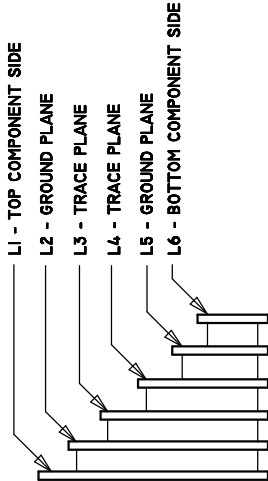
1. FAB PER IPC-A-600.
2. MATERIAL: -EPOXY FIBERGLASS, NEMA GRADE FR-4
-FINISHED THICKNESS TO BE 1.6mm +/- 0.127mm
-TOTAL OF 8 LAYERS WITH 2 OZ. CU ON THE OUTER LAYERS
AND 1 OZ. CU ON THE INNER LAYERS.
-FLAMMABILITY RATING: 94 V-0 MINIMUM.
3. SIZE: CUT TO DIMENSIONS AND TOLERANCES SHOWN.
0.00 ARE PRIMARY DATUMS.
4. DRILLING: -DRILL HOLES PER SCHEDULE. PLATE THROUGH
HOLES WITH COPPER, 0.0254mm THICK MIN.
-ALL HOLE SIZES ARE SPECIFIED AFTER PLATING.
-HOLE LOCATION TOLERANCES ARE +/-0.08mm
IN RELATION TO CENTER
5. FINISH: -SMOBC USING LPI BOTH SIDES, COLOR GREEN.
-GOLD IMMERSION BOTH SIDES.
(LEAD FREE SOLDER CAN BE USED FOR PROTOTYPE)
-FOR SILKSCREEN: BOTH SIDES USE WHITE NON-CONDUCTIVE INK
6. DO NOT ALTER ARTWORK e.g. TO ADD LOGO OR DATE CODE.
PAD SIZE CAN BE MODIFIED TO MEET END FINISH.
7. PCBs ARE TO BE RoHS COMPLIANT.
8. SCORING FOR PANELIZED PCBs:



COMPONENT SIDE SHOWN

SIZE	QTY	SYM	PLATED	TOL
0.25	196	+	YES	+/-0.08
0.76	10	□	YES	+/-0.08
1.78	3	◇	NO	+/-0.13
2.41	17	⊗	YES	+/-0.13
5.21	6	⊗	YES	+/-0.25

LAYER CONSTRUCTION



UNLESS OTHERWISE SPECIFIED DIMENSIONS ARE IN MILLIMETERS TOLERANCES ON ANGLE ±1°			
XX ± 0.25 XXX ± 0.127 INTERPRET DIM AND TOL PER ASME Y14.5M-1994 THIRD ANGLE PROJECTION			
DO NOT SCALE DRAWING			

APPROVALS			
PCB DES.	INITIALS		DATE
	MI	CZ	08/25/09
ENG.			08/25/09
SCALE: NONE			

 1630 MCCARTHY BLVD MILPITAS, CA 95035 PH: (408)432-1800 LTC CONFIDENTIAL - FOR CUSTOMER USE ONLY			
TITLE: FABRICATION DRAWING DUAL 15A SYNCHRONOUS BUCK CONVERTER WITH VIDS			
SIZE	IC NO.	REV	2
A	LTC3865EUH		
PCB NO. DEMO CIRCUIT 1479A			
FILENAME: 1479A-2.PCB			
SHT 1 of 1			