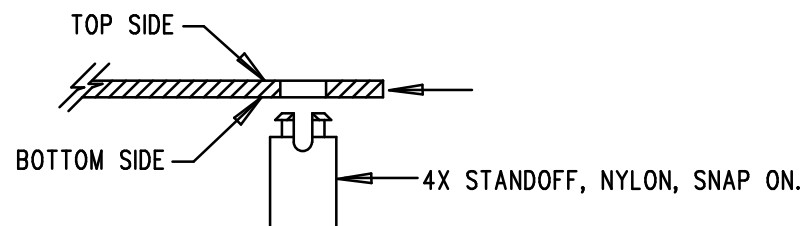



| REVISION HISTORY | | | | |
|------------------|-----|-------------|-----------|----------|
| ECO | REV | DESCRIPTION | APP. ENG. | DATE |
| - | 2 | PRODUCTION | SAM Y. | 03-22-10 |

NOTES: UNLESS OTHERWISE SPECIFIED

1. WORKMANSHIP SHALL BE IN ACCORDANCE WITH IPC-A-610.
2. ASSEMBLY PROCESS SHALL INCLUDE: REFLOW SOLDER TOP SIDE SMD.
3. PARTS TO OMIT WILL BE SPECIFIED ON THE BILLS OF MATERIAL. LOCATIONS OF OMITTED PARTS SHALL BE FREE OF SOLDER. MASK THE SOLDER STENCIL WHERE SMT PARTS ARE OMITTED.
4. INSTALL SHUNTS AS SHOWN ON ASSY DRAWING.
5. DEPANELIZE BOARDS AFTER ASSEMBLY AND ROUTE-OUT THE BREAKOUT TABS ON FOUR SIDES OF THE BOARD EDGE.
6. DO NOT APPLY ANY KIND OF ASSEMBLY STAMP OR QA STAMP TO ANY BOARD.
7. INSTALL 4 STANDOFFS AT 4 LOCATIONS AS SHOWN BELOW:



| APPROVALS | |  <div> 1630 MCCARTHY BLVD MILPITAS, CA 95035 PH: (408)432-1900 www.linear.com LTC CONFIDENTIAL- FOR CUSTOMER USE ONLY </div> | | |
|--------------|--------|--|--------------------|------------|
| PCB DES. | KT | | | |
| APP ENG. | SAM Y. | TITLE: TOP ASSEMBLY DRAWING | | |
| | | HIGH DENSITY 6A STEP-DOWN POWER uMODULE | | |
| | | SIZE | IC NO. LTM4618EV | REV. 2 |
| | | N/A | DEMO CIRCUIT 1472A | |
| SCALE = NONE | | FILENAME: DC1472A-2.PCB | | SHT 1 OF 2 |