

NOTES:

1. INSTALL SHUNTS AS SHOWN FOR JP1-JP9
2. DO NOT APPLY SOLDER TO PADS ASSOCIATED WITH UNINSTALLED COMPONENTS

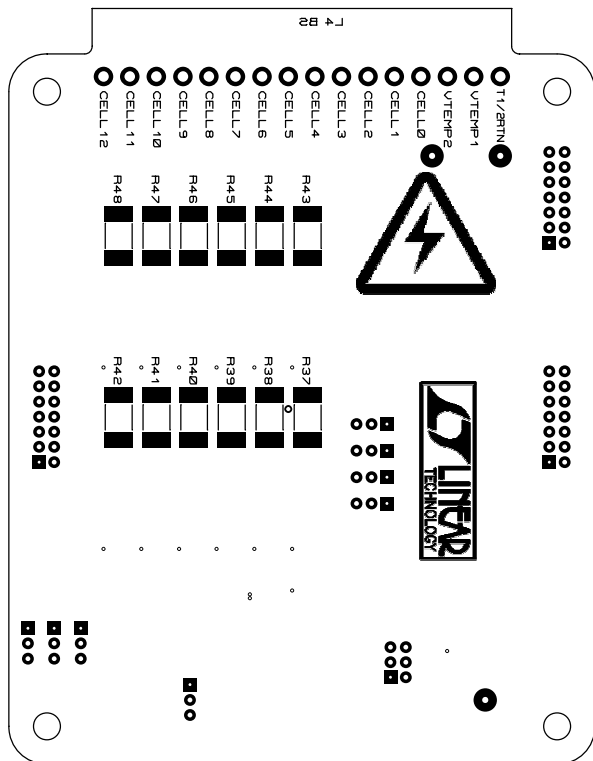


1630 McCarthy Blvd.
Milpitas, CA 95035
PH: (408) 432-1920

DC1393B PCB ASSEMBLY (TOP)

LTC6802IG-2 12-CELL BATTERY MONITOR

Jon Munson 5/4/2009 SH 1 of 2



1630 McCarthy Blvd.
Milpitas, CA 95035
PH: (408) 432-1920

DC1393B PCB ASSEMBLY (BOTTOM)

LTC6802IG-2 12-CELL BATTERY MONITOR

Jon Munson

5/4/2009

SH 2 of 2