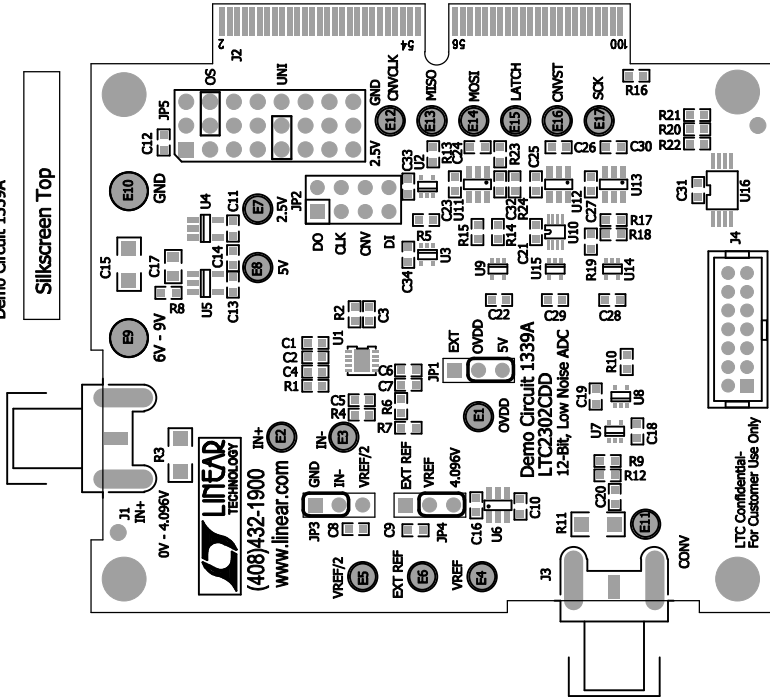
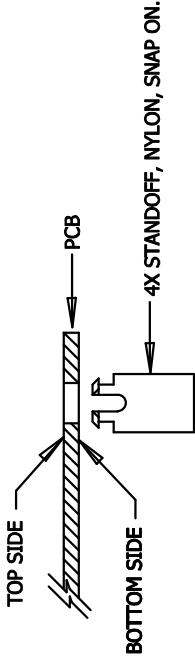


LINEAR TECHNOLOGY CORPORATION
Demo Circuit 1339A

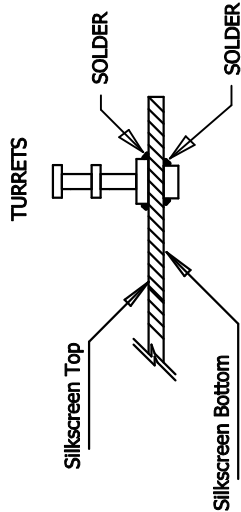


NOTES : Unless Otherwise Specified


1. BREAK BOARDS FROM THE PANEL WHEN ASSEMBLY IS COMPLETE.
2. OPTIONAL COMPONENTS ARE UNSTUFFED AND SHOULD BE COVER WITH SOLDER AFTER ASSEMBLY. (NO EXPOSED PADS)
3. JUMPER SHUNTS INSTALLATION: JP1- Pins 2 & 3, JP3 - Pins 1 & 2, JP4 - Pins 2 & 3, JP5- Pins 10 & 18, 5 & 13.
4. INSTALL 4 STANDOFFS AT 4 CORNERS AS SHOWN BELOW:



5. INSTALL TURRETS



Assembly, Top Drawing

APPROVALS					1630 McCarthy Blvd. Milpitas, CA 95035 PH: (408)432-1900	
	INIT	DATE				
DRAWN	RudyB					
CHECK						
DESIGN	Guy Hoover					
ENGR						
			TITLE: LTC2302CDD 12-Bit, Low Noise ADC			
			AD		REV. 1	
SCALE = NONE			DES-2xxxxx		Sheet 1 of 1	