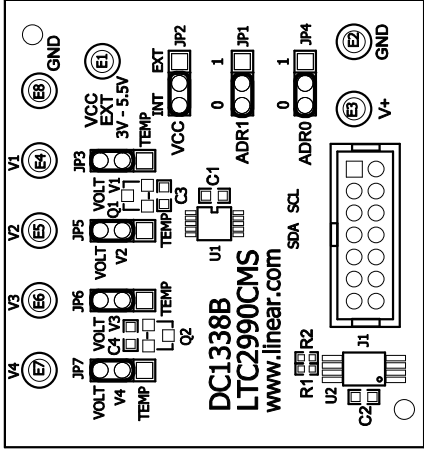



REVISION HISTORY			
ECO	REV	DESCRIPTION	APPR
-	1	PRODUCTION	Leo C
			DATE
			02/08/12



TOP SILKSCREEN
LINEAR TECHNOLOGY CORPORATION
DC1338B-Rev1, LTC2990CMS
DATE : 02/08/12

NOTES: UNLESS OTHERWISE SPECIFIED

1. WORKMANSHIP SHALL BE IN ACCORDANCE WITH IPC-A-610.
2. INSTALL SHUNTS AS SHOWN.
3. DEPANELIZE BOARDS AFTER ASSEMBLY AND ROUTE-OUT THE BREAKOUT TABS ON FOUR SIDES OF THE BOARD EDGE.
4. ASSEMBLY PROCESS SHALL INCLUDE: REFLOW SOLDER TOP SIDE SMD.

APPROVALS				LINEAR TECHNOLOGY		1630 MCCARTHY BLVD MILPITAS, CA 95035 PH: (408)432-1900 www.linear.com LTC CONFIDENTIAL- FOR CUSTOMER USE ONLY	
PCB DES.	RB						
APP ENG.	Leo C						
		TITLE: TOP ASSEMBLY DRAWING					
		TEMPERATURE, VOLTAGE AND CURRENT MONITOR					
		SIZE	IC NO.	LTC2990CMS	REV.		
		N/A	DEMO CIRCUIT 1338B		1		
SCALE = NONE		FILENAME: DC1338B-Rev1.PCB			SHT 1 OF 1		