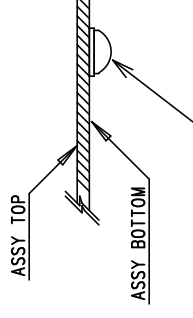


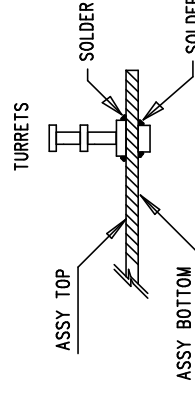
NOTES: UNLESS OTHERWISE SPECIFIED

1. WORKMANSHIP SHALL BE IN ACCORDANCE WITH IPC-A-610.
3. PARTS TO OMIT WILL BE SPECIFIED ON THE BILLS OF MATERIAL. LOCATIONS OF OMITTED PARTS SHALL BE FREE OF SOLDER. MASK THE SOLDER STENCIL WHERE SMT PARTS ARE OMITTED.
4. DEPANELIZE BOARDS AFTER ASSEMBLY AND ROUTE-OUT THE BREAKOUT TABS ON FOUR SIDES OF THE BOARD EDGE.
6. INSTALL 4 RUBBER FEET (BUMPON SJ-5303) AT 4 CORNERS AS SHOWN BELOW:

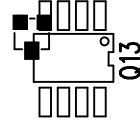


BOTTOM VIEW

INSTALLAT 0 OHM RESISTOR HERE FOR Q9.



Q13 INSTALLATION



A-A ASSY DRAWING (BOTTOM VIEW)

APPROVALS		INIT		DATE	
DRAWN					
CHECK					
DESIGN	J. WU			9/20/07	
ENGR	G. PERICA			9/20/07	
SCALE = NONE				SHT 1 of 1	



1630 McCarthy Blvd.
Milpitas, CA 95035
PH: (408)432-1900

TITLE: LT1952EGN-1, LT4430ES6

ISOLATED FORWARD DC/DC CONVERTER

SIZE A DEMO CIRCUIT DC1317A-A REV. A