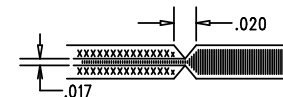



REVISIONS			
REV	DESCRIPTION	APPR	DATE
A	1ST PROTOTYPE	GH	05-22-07

SIZE	QTY	SYM	PLATED	TOL
0.19	4	+	YES	+/-0.003"
0.07	2	×	NO	+/-0.003"
0.012	217	□	YES	+/-0.003"
0.035	24	◇	YES	+/-0.003"
0.04	70	⊗	YES	+/-0.003"
0.064	2	⊠	YES	+/-0.003"

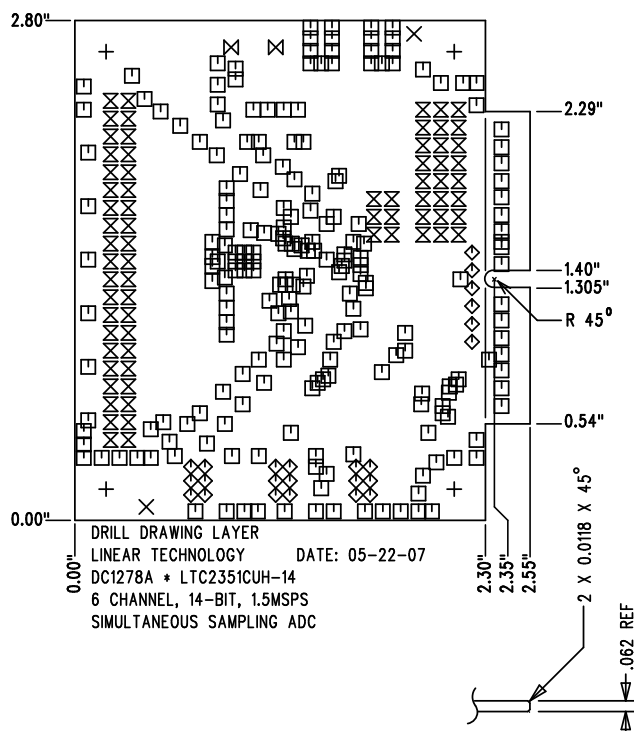
NOTES: UNLESS OTHERWISE SPECIFIED

- FAB PER IPC-A-600
- MATERIAL: EPOXY FIBERGLASS, NEMA GRADE FR-4
FINISHED THICKNESS TO BE 0.062" +/- 0.006"
TOTAL OF 4 LAYERS WITH 2 OZ. COPPER ON THE OUTER LAYERS AND 1 OZ. COPPER ON THE INTERNAL LAYERS.
FLAMABILITY RATING: 94 V-0 MINIMUM .
- FINISH: SMOBC USING LPI BOTH SIDES, COLOR GREEN.
GOLD IMMERSION (OMIKRON).
FOR SILKSCREEN: USE WHITE NON-CONDUCTIVE INK.
- DRILLING: DRILL HOLES PER SCHEDULE. ALL PLATED THROUGH HOLES WITH COPPER, 0.001" MIN. / 0.0015" MAX. COPPER PLATE
ALL HOLE SIZES ARE SPECIFIED AFTER PLATING. HOLE LOCATION TOLERANCES ARE +/-0.01" IN RELATION TO CENTER
- DO NOT ALTER ARTWORK e.g. TO ADD LOGO OR DATE CODE.
- SUBJECT TO CHANGE BY MANUFACTURER, DEPENDING ON DIELECTRIC CONSTANT DEVIATIONS. PLEASE CONSULT LTC.
- FINGER AREA: GOLD PLATE TO MIN. OF 0.00003 INCHES.
PER MIL-G-45204, TYP II, CL1, GRADE C, OVER 0.0002 INCHES
LOW STRESS NICKEL PER QQ-N-290, CL2.
- SCORING FOR PANELIZED PCB:



APPROVALS			 1630 MCCATHY BLVD MILPITAS, CA 95035 PH: (408)432-1900 LTC CONFIDENTIAL- FOR CUSTOMER USE ONLY	
	INIT	DATE		
DRAWN			TITLE: FABRICATION DRAWING 6 CHANNEL, 14-BIT, 1.5MSPS SIMULTANEOUS SAMPLING ADC	
CHECK				
DESIGN	KIM T.	05-22-07	SIZE A DEMO DC1278A * LTC2351CUH-14 REV. A	
ENGR	GUY H.	05-22-07		
SCALE = NONE			SHT 1 of 1	

SHOWN FROM COMPONENT SIDE



.0028"		MICROSTRIP
⑥	.021"	CORE MATERIAL
.0014"		MICROSTRIP
.0014"		PREPREG
.0014"		MICROSTRIP
⑥	.021"	CORE MATERIAL
.0028"		MICROSTRIP

LAYER STRUCTURE