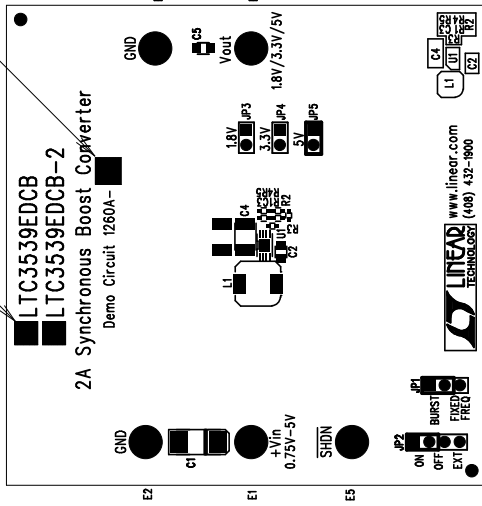


REVISIONS		
REV	DESCRIPTION	DATE

MARK "X" PER BOM TO INDICATE WHICH IC IN THIS BOARD.

MARK VERSION "A" OR "B" PER BOM



Silkscreen Top

NOTES : Unless Otherwise Specified

1. BREAK BOARDS FROM THE PANEL WHEN ASSEMBLY IS COMPLETE.
2. OPTIONAL COMPONENTS ARE UNSTUFFED AND SHOULD BE COVERED WITH SOLDER AFTER ASSEMBLY.
3. JUMPER SHUNTS INSTALLATION: JP1: BURST
JP2: ON
JP5: 5V

ASSY DRAWING

APPROVALS		LINEAR TECHNOLOGY	
PCB DESIGNER	INIT	DATE	1630 McCarthy Blvd. Milpitas, CA 95035 PH: (408)432-1900
J. WU		4/18/07	
ENGINEER		4/18/07	
F. Hoffart			
CHECK			
TITLE: LTC3539EDCB/LTC3539EDCB-2 2A Synchronous Boost Converter		SIZE	REV. 1
		A	DC1260A
SCALE = NONE		SHT 1 of 1	