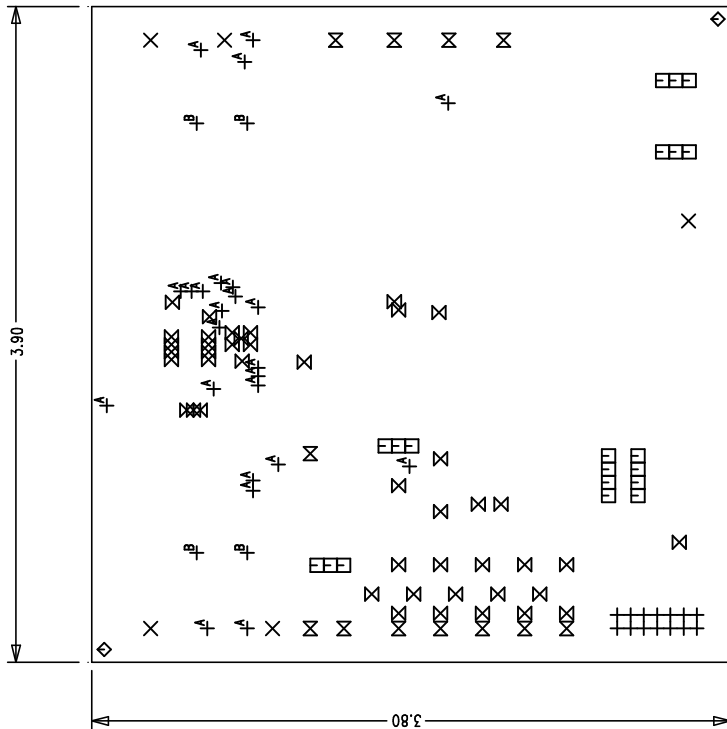


REVISION HISTORY			
ECO	REV	DESCRIPTION	DATE

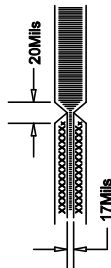
ULTC CONFIDENTIAL - For Customer Use Only



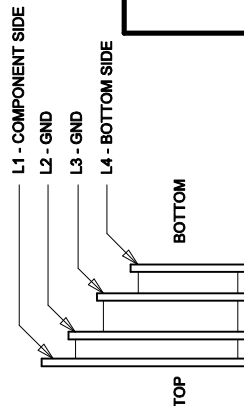
SIZE	QTY	SYM	PLATED	TOL
35	14	+	YES	+/-3mil
95	5	X	YES	+/-3mil
30	20	□	YES	+/-3mil
70	2	◇	NO	+/-3mil
10	44	⊗	YES	+/-3mil
65	12	⊗	YES	+/-3mil
20	24	⊗ ^A	YES	+/-3mil
55	4	⊗ ^B	YES	+/-3mil

NOTES : Unless Otherwise Specified



1. FAB PER IPC-A-600.
2. MATERIAL: EPOXY FIBERGLASS, NEMA GRADE FR-4.
 - 2 OZ. COPPER FINISH ON EXTERNAL LAYERS.
 - 1 OZ. COPPER FINISH ON INTERNAL LAYERS.
- THICKNESS .062 +/- .006 TOTAL OF 4 LAYERS.
- FLAMMABILITY RATING: 94 V-0 MINIMUM .
3. SIZE: DIMENSIONS SHOWN AND TOLERANCES +/-0.010
0.00 ARE PRIMARY DATUMS.
4. DRILLING: DRILL HOLES PER SCHEDULE. PLATE THROUGH HOLES WITH COPPER, .001 INCH THICK MIN. ALL HOLE SIZES ARE SPECIFIED AFTER PLATING.
- HOLE LOCATION TOLERANCES ARE +/-3MIL
INCH IN RELATION TO CENTER
5. FINISH: SMOBC USING LPT BOTH SIDES COLOR GREEN.
GOLD IMMERSION BOTH SIDES.
6. SILKSCREEN : USING WHITE NON-CONDUCTIVE EPOXY INK.
7. DO NOT ALTER ARTWORK TO ADD LOGO OR DATE CODE BUT YOU MAY MODIFY PAD SIZE TO MEET END FINISH.
8. PCB'S SHOULD BE RoHS COMPLIANT.
9. SCORING:



LINEAR TECHNOLOGY CORPORATION
DC1243A REV. I
L1-COMPONENT SIDE



LAYER CONSTRUCTION

<div>UNLESS OTHERWISE SPECIFIED DIMENSIONS ARE IN INCHES TOLERANCES ON ANGLES: 1° 2 PLACE ±.01 3 PLACE ±.005 INTERPRET DIM AND TOL PER ASME Y14.5M - 1984</div> <div>THIRD ANGLE PROJECTION</div> <div></div> <div>DO NOT SCALE DRAWING</div>	CONTRACT NO.			<div>1630, McCarthy Blvd. Milpitas, CA 95035 Phone: (408)432-1900 Fax: (408)434-0507</div>				
	APPROVALS		DATE	TITLE LTC4215CUFD-1, HOT SWAP CONTROLLER WITH CURRENT AND VOLTAGE MONITOR				
	DRAWN <i>Rudy Bantistzu</i>		05/01/08					
	CHECKED							
	APPROVED			SIZE	CAGE CODE	DWG NO.	REV	
			A	FAB		1		
DESIGNED BY <i>Vlad Oshetrov</i>		SCALE: NONE	FILENAME: 1243A_Rev1.PCB		SHEET	1	OF 1	