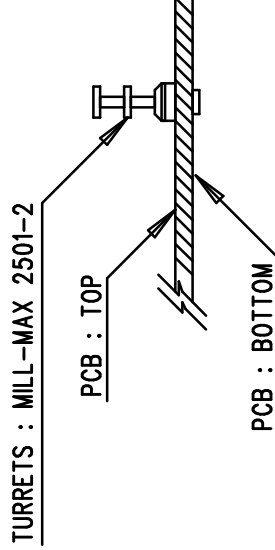
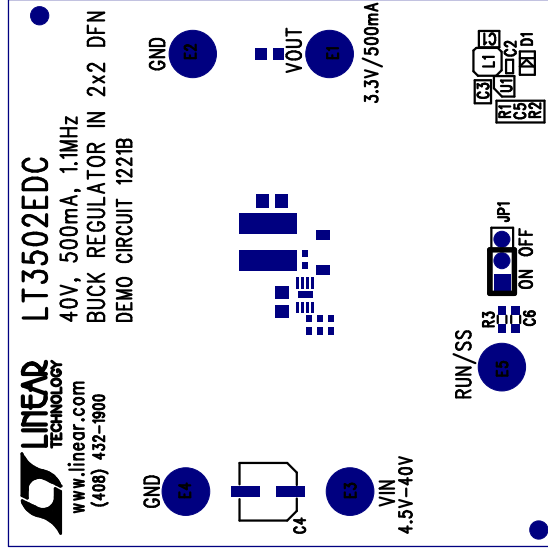


REVISION HISTORY			
ECO	REV	DESCRIPTION	APP. ENG.
-	1	PRODUCTION	MOLLY Z.
			DATE
			04-05-10

NOTES: UNLESS OTHERWISE SPECIFIED

1. WORKMANSHIP SHALL BE IN ACCORDANCE WITH IPC-A-610.
2. ASSEMBLY PROCESS SHALL INCLUDE: REFLOW SOLDER TOP SIDE SMD.
3. PARTS TO OMIT WILL BE SPECIFIED ON THE BILL OF MATERIALS. LOCATIONS OF OMITTED PARTS SHALL BE FREE OF SOLDER. MASK THE SOLDER STENCIL WHERE SMT PARTS ARE OMITTED.
4. INSTALL SHUNTS AS SHOWN ON ASSY DRAWING.
5. DEPANELIZE BOARDS AFTER ASSEMBLY AND ROUTE-OUT THE BREAKOUT TABS ON FOUR SIDES OF THE BOARD EDGE.
6. DO NOT APPLY ANY KIND OF ASSEMBLY STAMP OR QA STAMP



APPROVALS		LINEAR TECHNOLOGY		1630 MCCARTHY BLVD MILPITAS, CA 95035 PH: (408)432-1900 www.linear.com LTC CONFIDENTIAL - FOR CUSTOMER USE ONLY	
PCB DES.	JW	TITLE: TOP ASSEMBLY DRAWING		40V, 500mA, 1.1MHz BUCK REGULATOR IN 2x2 DFN	
APP ENG.	MOLLY Z.	SIZE		REV.	
		N/A		1	
SCALE = NONE		IC NO.		REV.	
		LT3502EDC		1	
		DEMO CIRCUIT 1221B			
		FILENAME: 1221B.PCB		SHT 1 OF 1	