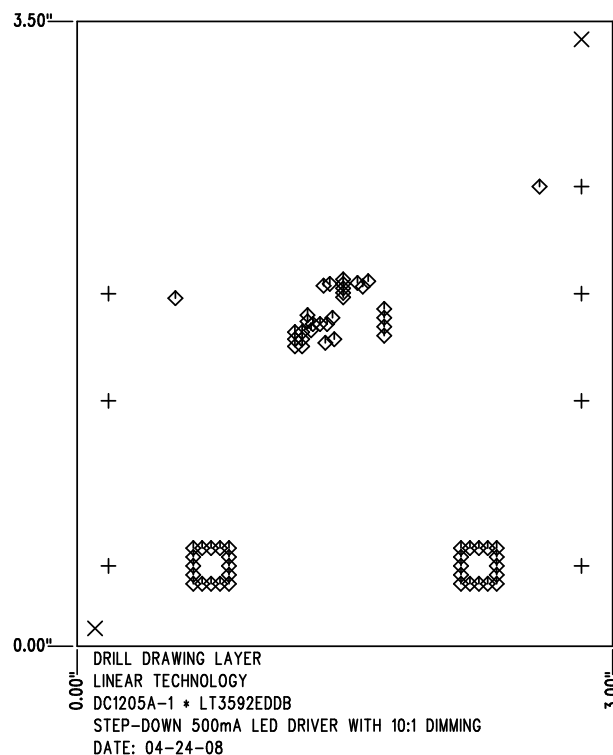
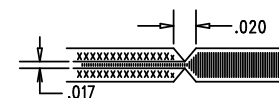


REVISIONS			
REV	DESCRIPTION	APPR	DATE
A-1	FINAL FABRICATION	KS	04-24-08

SIZE	QTY	SYM	PLATED	TOL
0.094	7	+	YES	+/-0.003"
0.07	2	X	NO	+/-0.003"
0.012	63	◇	YES	+/-0.003"

NOTES: UNLESS OTHERWISE SPECIFIED

- FAB PER IPC-A-600
- MATERIAL: EPOXY FIBERGLASS, NEMA GRADE FR-4
FINISHED THICKNESS TO BE 0.062" +/- .005"
TOTAL OF 4 LAYERS WITH 2 OZ. CU ON THE OUTER LAYERS AND 1 OZ. CU ON THE INNER LAYERS.
FLAMMABILITY RATING: 94 V-0 MINIMUM .
- SIZE: CUT TO DIMENSIONS AND TOLERANCES SHOWN.
0.00" ARE PRIMARY DATUMS.
- DRILLING: DRILL HOLES PER SCHEDULE. PLATE THROUGH HOLES WITH COPPER, 0.001" THICK MIN.
ALL HOLE SIZES ARE SPECIFIED AFTER PLATING.
HOLE LOCATION TOLERANCES ARE +/-0.003" IN RELATION TO CENTER
- FINISH: SMOBC USING LPI BOTH SIDES, COLOR GREEN.
GOLD IMMERSION. USE LEAD FREE SOLDER FOR PROTOTYPE.
FOR SILKSCREEN: USE WHITE NON-CONDUCTIVE INK.
- DO NOT ALTER ARTWORK e.g. TO ADD LOGO OR DATE CODE.
PAD SIZE CAN BE MODIFIED TO MEET END FINISH.
- PCBS ARE TO BE RoHS COMPLIANT.
- SCORING FOR PANELIZED PCB:



SHOWN FROM COMPONENT SIDE

APPROVALS		LINEAR TECHNOLOGY		1630 MCCARTHY BLVD MILPITAS, CA 95035 PH: (408)432-1900 LTC CONFIDENTIAL- FOR CUSTOMER USE ONLY	
	INIT	DATE			
DRAWN					
CHECK					
DESIGN	KIM T.	04-24-08	TITLE: FABRICATION DRAWING		
ENGR	KEITH S.	04-24-08	STEP-DOWN 500mA LED DRIVER WITH 10:1 DIMMING		
			SIZE	DEMO	REV. A-1
			A	DC1205A-1 * LT3592EDDB	
SCALE = NONE			SHT 1 of 1		