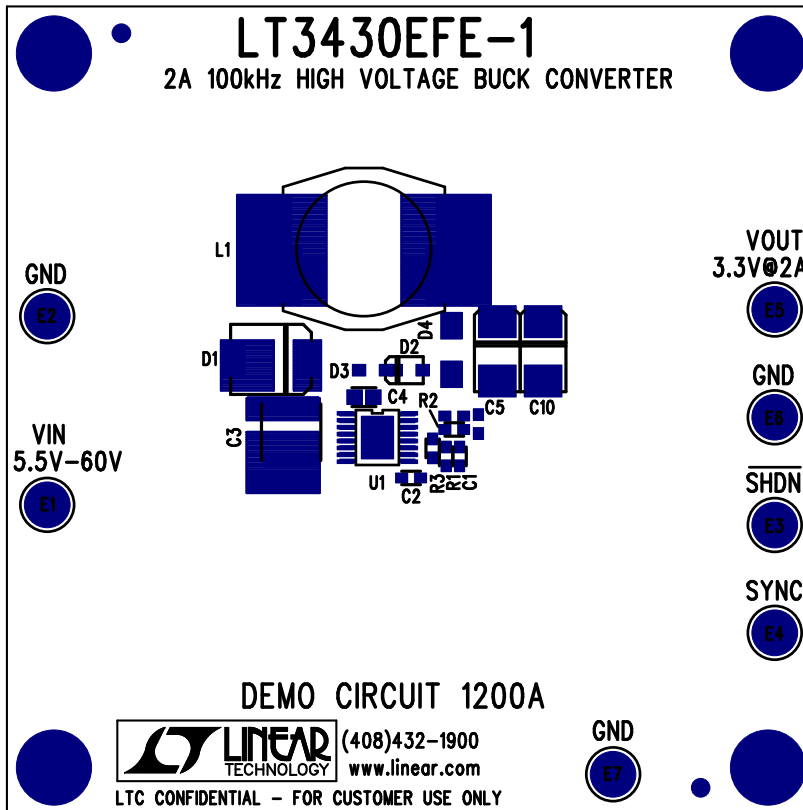
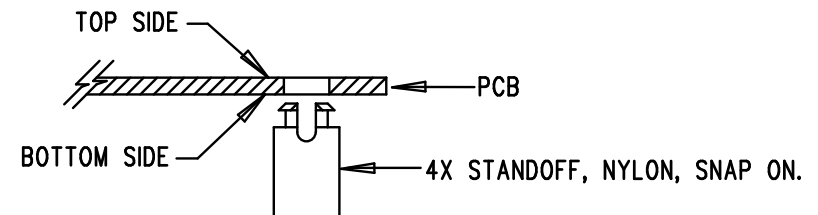


REVISIONS			
REV	DESCRIPTION	APPR	DATE
A	1ST PROTOTYPE	KS	01-17-07



NOTES: UNLESS OTHERWISE SPECIFIED

1. WORKMANSHIP SHALL BE IN ACCORDANCE WITH IPC-A-610.
2. NO SHUNT.
3. PARTS TO OMIT WILL BE SPECIFIED ON THE BILL OF MATERIALS. LOCATIONS OF OMITTED PARTS SHALL BE FREE OF SOLDER. MASK THE SOLDER STENCIL WHERE SMT PARTS ARE OMITTED.
4. DEPANELIZE BOARDS AFTER ASSEMBLY AND ROUTE-OUT THE BREAKOUT TABS ON FOUR SIDES OF THE BOARD EDGE.
5. ASSY PROCESSES SHALL INCLUDE: REFLOW SOLDER TOP SIDE SMD.
6. INSTALL 4 STANDOFFS AT 4 CORNERS AS SHOWN BELOW:



APPROVALS

	INIT	DATE
DRAWN		
CHECK		
DESIGN	KIM T.	01-17-07
ENGR	KEITH S.	01-17-07
SCALE = NONE		



TITLE: TOP ASSEMBLY DRAWING		
2A 100kHz HIGH VOLTAGE BUCK CONVERTER		
SIZE	DEMO	REV.
A	DC1200A * LT3430EFE-1	A
SCALE = NONE		SHT 1 of 2