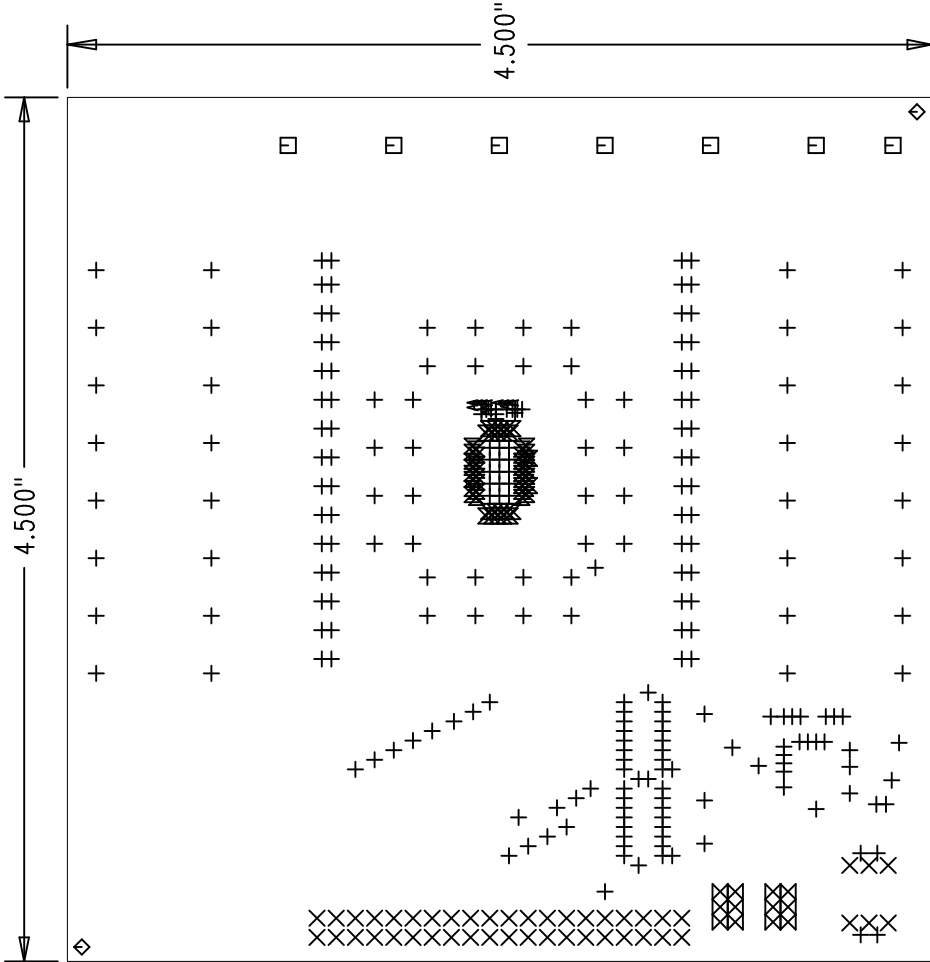
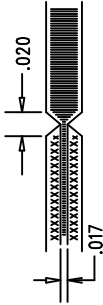


REVISIONS		
REV	DESCRIPTION	APPR DATE


NOTES: UNLESS OTHERWISE SPECIFIED

1. FAB PER IPC-A-600. LEAD FREE ASSEMBLY TEMPERATURE REQUIRED.
2. MATERIAL: EPOXY FIBERGLASS, NEMA GRADE FR-4
FINISHED THICKNESS TO BE 0.062" +/- 0.006"
TOTAL OF 4 LAYERS WITH 2 OZ. COPPER ON THE OUTER LAYERS AND 1 OZ. COPPER ON THE INTERNAL LAYERS.
FLAMABILITY RATING: 94 V-0 MINIMUM.
3. FINISH: SMOBC USING LPI BOTH SIDES, COLOR GREEN.
GOLD IMMERSION (OMIKRON). (not required for prototype)
FOR SILKSCREEN: USE WHITE NON-CONDUCTIVE INK.
4. DRILLING: DRILL HOLES PER SCHEDULE. ALL PLATED THROUGH HOLES WITH COPPER, 0.001" MIN. / 0.0015" MAX. COPPER PLATE ALL HOLE SIZES ARE SPECIFIED AFTER PLATING. HOLE LOCATION TOLERANCES ARE +/-0.003" IN RELATION TO CENTER
5. DO NOT ALTER ARTWORK e.g. TO ADD LOGO OR DATE CODE.
6. SCORING FOR PANELIZED PCB: (not required for prototype)



SIZE	QTY	SYM	PLTD	TOL
15	228	+	YES	+/-0.0
35	46	X	YES	+/-0.0
95	7	□	YES	+/-0.0
72	2	◇	NO	+/-0.0
40	12	⊗	YES	+/-0.0
6	56	⊗	YES	+/-0.0
9	12	⊕	YES	+/-0.0

Fabrication Drawing

APPROVALS		 LINEAR TECHNOLOGY 1630 McCarthy Blvd. Milpitas, CA 95035 PH: (408)432-1900	
DRAWN	INIT	DATE	
CHECK	KL		
DESIGN			
ENGR			
SCALE = NONE		LT3595EUHH 16-Channel Buck Mode LED Driver SIZE DEMO BRD DC1199A REV. A	
		SHT 1 of 1	