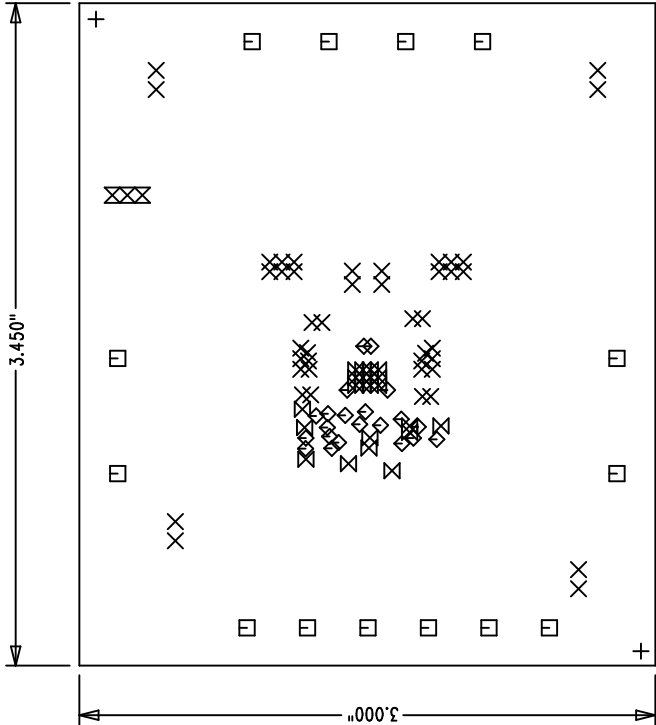
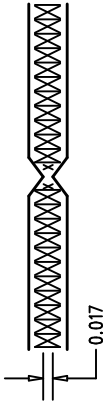


REVISIONS		
REV	DESCRIPTION	APPR DATE



NOTES : Unless Otherwise Specified

1. MATERIAL : FR4 OR EQUIVALENT EPOXY
2 OZ OUTER, 1 OZ INNER COPPER CLAD
THICKNESS .062 +/--.006 TOTAL OF 4 LAYERS
2. FINISH : ALL PLATED HOLES .001 MIN. / .0015 MAX. COPPER PLATE
WHITE TIN IMMERSION (OMIKRON) BOTH SIDES. (not required for prototype boards)
3. SOLDER MASK : BOTH SIDES USING GREEN LPI
4. SILKSCREEN : USING WHITE NON-CONDUCTIVE EPOXY INK
5. DO NOT ALTER ARTWORK e.g. TO ADD LOGO, DATE, OR TEST CODE.
6. ALL DIMENSIONS ARE IN INCHES
7. SCORING: (prototype boards are not required for scoring)



SIZE	QTY	SYM	PLTD	TOL
70	2	+	NO	+/-0.0
20	44	X	YES	+/-0.0
95	14	□	YES	+/-0.0
10	21	◇	YES	+/-0.0
13	22	⊗	YES	+/-0.0
34	3	⊗	YES	+/-0.0

Fabrication Drawing

APPROVALS		INITIALS		DATE	
DRAWN	KL				
CHECK					
DESIGN					
ENGR					
SCALE = NONE		DES-		SHT 1 of 1	



LINEAR

TECHNOLOGY

1630 McCarthy Blvd.
Milpitas, CA 95035
PH: (408)432-1900

TITLE: LT3510EFE
Dual Monolithic Step-Down DC/DC Converter

SIZE A Demo Circuit 1157A Rev A