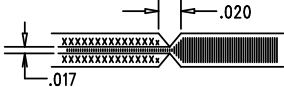


| REVISIONS | | | |
|-----------|-------------------|------|----------|
| REV | DESCRIPTION | APPR | DATE |
| A | FINAL FABRICATION | KH | 07-24-07 |

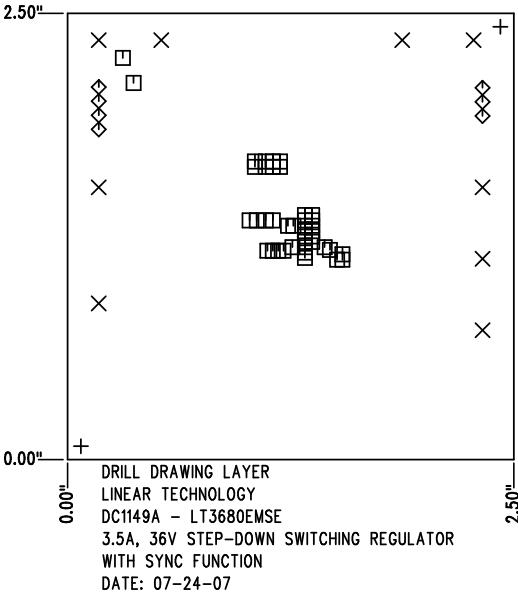
| SIZE | QTY | SYM | PLATED | TOL |
|-------|-----|-----|--------|-----------|
| 0.07 | 2 | + | NO | +/-0.003" |
| 0.094 | 9 | × | YES | +/-0.003" |
| 0.012 | 41 | □ | YES | +/-0.003" |
| 0.035 | 7 | ◇ | YES | +/-0.003" |


NOTES: UNLESS OTHERWISE SPECIFIED

- FAB PER IPC-A-600
- MATERIAL: EPOXY FIBERGLASS, NEMA GRADE FR-4
FINISHED THICKNESS TO BE 0.062" +/- 0.006"
TOTAL OF 4 LAYERS WITH 2 OZ. COPPER ON THE OUTER LAYERS AND 1 OZ. COPPER ON THE INTERNAL LAYERS.
FLAMABILITY RATING: 94 V-0 MINIMUM .
- FINISH: SMOBC USING LPI BOTH SIDES, COLOR GREEN.
GOLD IMMERSION.
FOR SILKSCREEN: USE WHITE NON-CONDUCTIVE INK.
- DRILLING: DRILL HOLES PER SCHEDULE. ALL PLATED THROUGH HOLES WITH COPPER, 0.001" MIN. / 0.0015" MAX. COPPER PLATE
ALL HOLE SIZES ARE SPECIFIED AFTER PLATING. HOLE LOCATION TOLERANCES ARE +/-0.01" IN RELATION TO CENTER
- DO NOT ALTER ARTWORK e.g. TO ADD LOGO OR DATE CODE.
- SCORING FOR PANELIZED PCB:



SHOWN FROM COMPONENT SIDE



| APPROVALS | | |  <div> 1630 MCCATHY BLVD MILPITAS, CA 95035 PH: (408)432-1900 LTC CONFIDENTIAL- FOR CUSTOMER USE ONLY </div> | |
|--------------|----------|----------|---|-----------------------------------|
| | INIT | DATE | | |
| DRAWN | | | TITLE: FABRICATION DRAWING 3.5A, 36V STEP-DOWN SWITCHING REGULATOR WITH SYNC FUNCTION | |
| CHECK | | | | |
| DESIGN | KIM T. | 07-24-07 | | |
| ENGR | KEVIN H. | 07-24-07 | | |
| | | | SIZE A | DEMO DC1149A-LT3680EMSE |
| | | | REV. A | |
| SCALE = NONE | | | SHT 1 of 1 | |