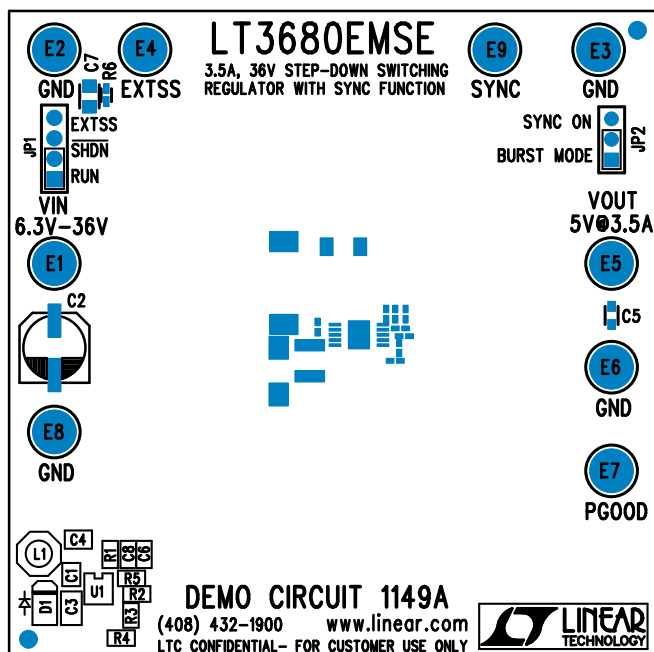


REVISIONS			
REV	DESCRIPTION	APPR	DATE
A	FINAL FABRICATION	KH	07-24-07



NOTES: UNLESS OTHERWISE SPECIFIED

1. WORKMANSHIP SHALL BE IN ACCORDANCE WITH IPC-A-610.
2. INSTALL SHUNT ON JP1-JP2 PINS 1&2.
3. DEPANELIZE BOARDS AFTER ASSEMBLY AND ROUTE-OUT THE BREAKOUT TABS ON FOUR SIDES OF THE BOARD EDGE.
4. ASSY PROCESSES SHALL INCLUDE: REFLOW SOLDER TOP SIDE SMD.

TOP SILKSCREEN
 LINEAR TECHNOLOGY
 DC1149A - LT3680EMSE
 3.5A, 36V STEP-DOWN SWITCHING REGULATOR
 WITH SYNC FUNCTION
 DATE: 07-24-07

APPROVALS

	INIT	DATE
DRAWN		
CHECK		
DESIGN	KIM T.	07-24-07
ENGR	KEVIN H.	07-24-07

LINEAR TECHNOLOGY
 1630 MCCATHY BLVD
 MILPITAS, CA 95035
 PH: (408)432-1900
 LTC CONFIDENTIAL-
 FOR CUSTOMER USE ONLY

TITLE: TOP ASSEMBLY DRAWING
 3.5A, 36V STEP-DOWN SWITCHING REGULATOR
 WITH SYNC FUNCTION

SIZE A DEMO DC1149A-LT3680EMSE REV. A

SCALE = NONE

SHT 1 of 1