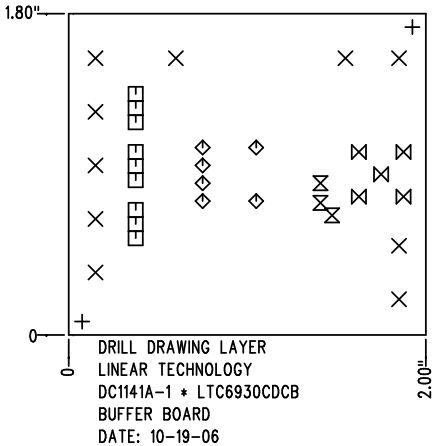


REVISIONS			
REV	DESCRIPTION	APPR	DATE
A-1	FINAL FABRICATION	PK	10-19-06

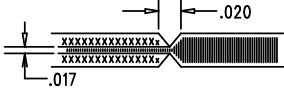



SHOWN FROM COMPONENT SIDE

SIZE	QTY	SYM	PLATED	TOL
0.07	2	+	NO	+/-0.003"
0.094	10	X	YES	+/-0.003"
0.035	9	□	YES	+/-0.003"
0.04	6	◇	YES	+/-0.003"
0.015	3	⊗	YES	+/-0.003"
0.055	5	⊗	YES	+/-0.003"

NOTES: UNLESS OTHERWISE SPECIFIED

- FAB PER IPC-A-600
- MATERIAL: EPOXY FIBERGLASS, NEMA GRADE FR-4  
 FINISHED THICKNESS TO BE 0.062" +/- 0.006"  
 TOTAL OF 2 LAYERS WITH 2 OZ. COPPER ON EACH LAYER.  
 FLAMABILITY RATING: 94 V-0 MINIMUM .
- FINISH: SMOBC USING LPI BOTH SIDES, COLOR GREEN.  
 LEAD-FREE SOLDER PLATING.  
 FOR SILKSCREEN: USE WHITE NON-CONDUCTIVE INK.
- DRILLING: DRILL HOLES PER SCHEDULE. ALL PLATED THROUGH HOLES  
 WITH COPPER, 0.001" MIN. / 0.0015" MAX. COPPER PLATE  
 ALL HOLE SIZES ARE SPECIFIED AFTER PLATING. HOLE  
 LOCATION TOLERANCES ARE +/-0.01" IN RELATION TO CENTER
- DO NOT ALTER ARTWORK e.g. TO ADD LOGO OR DATE CODE.
- SCORING FOR PANELIZED PCB:



APPROVALS			 <div>           1630 MCCATHY BLVD            MILPITAS, CA 95035            PH: (408)432-1900            LTC CONFIDENTIAL-            FOR CUSTOMER USE ONLY         </div>	
	INIT	DATE		
DRAWN			TITLE: FABRICATION DRAWING <b>BUFFER BOARD</b>	
CHECK				
DESIGN	KIM T.	10-19-06		
ENGR	PHILIP K.	10-19-06		
			SIZE <b>A</b> DEMO DC1141A-1 * LTC6930CDCB REV. <b>A-1</b>	
SCALE = NONE			SHT 1 of 1	