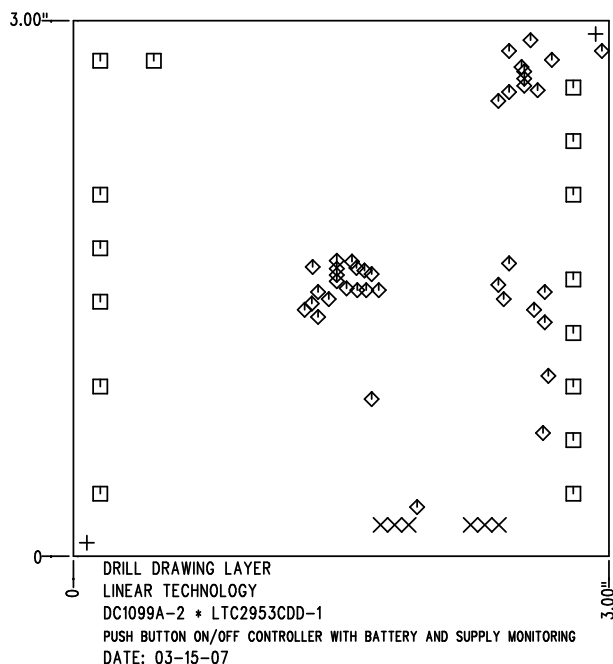


REVISIONS			
REV	DESCRIPTION	APPR	DATE
A-2	FINAL FABRICATION	DR	03-15-07

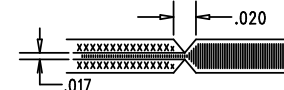



SHOWN FROM COMPONENT SIDE

SIZE	QTY	SYM	PLATED	TOL
0.07	2	+	NO	+/-0.003"
0.035	6	×	YES	+/-0.003"
0.094	15	□	YES	+/-0.003"
0.015	39	◇	YES	+/-0.003"

NOTES: UNLESS OTHERWISE SPECIFIED

1. FAB PER IPC-A-600
2. MATERIAL: EPOXY FIBERGLASS, NEMA GRADE FR-4  
FINISHED THICKNESS TO BE 0.062" +/- 0.006"  
TOTAL OF 2 LAYERS WITH 2 OZ. COPPER ON EACH LAYER.  
FLAMABILITY RATING: 94 V-0 MINIMUM .
3. FINISH: SMOBC USING LPI BOTH SIDES, COLOR GREEN.  
WHITE-TIN IMMERSION.  
FOR SILKSCREEN: USE WHITE NON-CONDUCTIVE INK.
4. DRILLING: DRILL HOLES PER SCHEDULE. ALL PLATED THROUGH HOLES WITH COPPER, 0.001" MIN. / 0.0015" MAX. COPPER PLATE  
ALL HOLE SIZES ARE SPECIFIED AFTER PLATING. HOLE LOCATION TOLERANCES ARE +/-0.01" IN RELATION TO CENTER
5. DO NOT ALTER ARTWORK e.g. TO ADD LOGO OR DATE CODE.
6. SCORING FOR PANELIZED PCB:



APPROVALS			 <div> 1630 MCCATHY BLVD  MILPITAS, CA 95035  PH: (408)432-1900  LTC CONFIDENTIAL-  FOR CUSTOMER USE ONLY </div>	
	INIT	DATE		
DRAWN			<b>TITLE: FABRICATION DRAWING</b> <b>PUSH BUTTON ON/OFF CONTROLLER</b> <b>WITH BATTERY AND SUPPLY MONITORING</b>	
CHECK				
DESIGN	KIM T.	03-15-07	<b>SIZE</b> A <b>DEMO</b> DC1099A-2 * LTC2953CDD-1 <b>REV.</b> A-2	
ENGR	DILIAN R.	03-15-07		
SCALE = NONE			SHT 1 of 1	