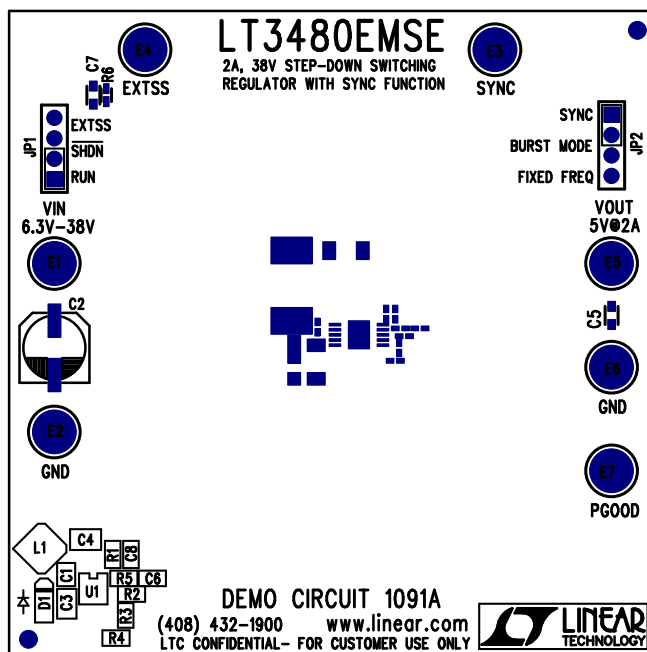


REVISIONS			
REV	DESCRIPTION	APPR	DATE
A-1	FINAL FABRICATION	KH	01-03-07



TOP SILKSCREEN  
LINEAR TECHNOLOGY  
DC1091A-1 \* LT3480EMSE  
2A, 38V STEP-DOWN SWITCHING REGULATOR WITH SYNC FUNCTION  
DATE: 01-03-07

## NOTES: UNLESS OTHERWISE SPECIFIED

1. WORKMANSHIP SHALL BE IN ACCORDANCE WITH IPC-A-610.
2. INSTALL SHUNT ON JP1-JP2 PINS 1&2.
3. PARTS TO OMIT WILL BE SPECIFIED ON THE BILL OF MATERIALS. LOCATIONS OF OMITTED PARTS SHALL BE FREE OF SOLDER. MASK THE SOLDER STENCIL WHERE SMT PARTS ARE OMITTED.
4. DEPANELIZE BOARDS AFTER ASSEMBLY AND ROUTE-OUT THE BREAKOUT TABS ON FOUR SIDES OF THE BOARD EDGE.
5. ASSY PROCESSES SHALL INCLUDE: REFLOW SOLDER TOP SIDE SMD.

## APPROVALS

	INIT	DATE
DRAWN		
CHECK		
DESIGN	KIM T.	01-03-07
ENGR	KEVIN H.	01-03-07



TITLE: TOP ASSEMBLY DRAWING  
2A, 38V STEP-DOWN SWITCHING REGULATOR  
WITH SYNC FUNCTION

SIZE	DEMO	REV.
A	DC1091A-1 * LT3480EMSE	A-1

SCALE = NONE

SHT 1 of 1