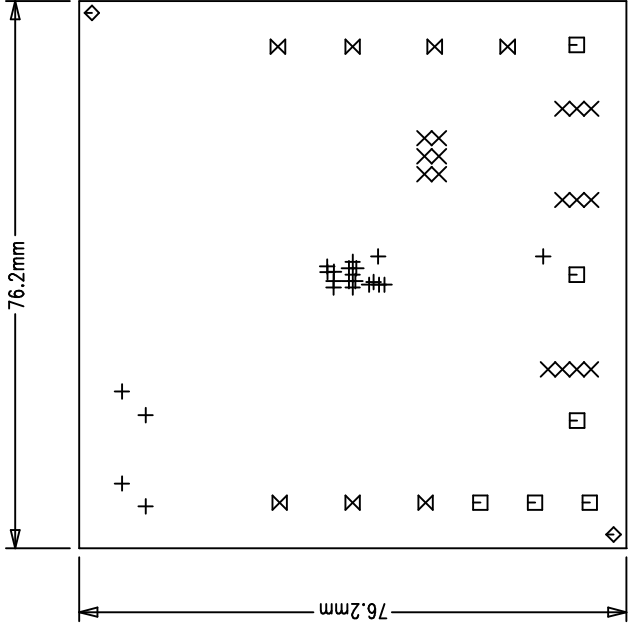


LTC CONFIDENTIAL – For Customer Use Only



COMPONENT SIDE SHOWN

NOTES: UNLESS OTHERWISE SPECIFIED,

1. ARTWORK P/N DC1068A REV 1.
2. FAB PER IPC-A-600
3. MATERIAL: EPOXY FIBERGLASS, NEMA GRADE FR-4  
1.6 +/- 0.13 mm THICKNESS WITH 2 OZ. (50um)  
COPPER FINISH ON TWO OUTER LAYERS AND  
1 OZ. (25um) COPPER ON TWO INTERNAL LAYERS.  
FLAMABILITY RATING: 94 V-2 MINIMUM .
4. SIZE: CUT TO DIMENSIONS AND TOLERANCES SHOWN.  
0.00 ARE PRIMARY DATUMS.
5. BOARD: SELECTIVE PLATED BOARD. SOLDER  
MASK OVER BARE COPPER, COLOR, GREEN LPI.  
WHITE TIN IMMERSION (OMIKRON PROCESS) BOTH SIDES.  
SILKSCREEN COMPONENT SIDE WITH WHITE  
NON-CONDUCTIVE INK.  
PLATE THRU ALL HOLES WITH COPPER  
MIN. PLATING THICKNESS: 1 OZ. (25um) EXCEPT  
WHERE PLATING NOT REQUIRED
6. DRILL: ALL HOLES SHALL BE DRILLED +/- 0.08mm  
WITH RESPECT TO CTR. OF DRILLED PAD.  
ALL HOLES FINISHED SIZE AFTER PLATING.
7. DO NOT ALTER ARTWORK e.g. TO ADD LOGO OR DATE CODE.

REVISION HISTORY

ECO	REV	DESCRIPTION	DATE	APPROVED
	1	PROTO	02/21/06	



1630 McCarthy Blvd.  
Milpitas, CA 95035 .  
Phone: (408)432-1900  
Fax: (408)434-0507

TITLE

FAB, LTC3550EDHC, Li-ION CHARGER with  
SYNCHRONOUS BUCK CONVERTER

SIZE CAGE CODE

A

DWG NO.

DC1068A

REV

1

SCALE 1/1

FILENAME: 1068A-1.PCB

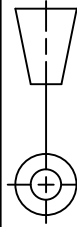
SHEET

1 OF

1

UNLESS OTHERWISE SPECIFIED  
DIMENSIONS ARE IN MILLIMETERS  
TOLERANCES ON ANGLE ± 1°  
.XX ±.25  
.XXX ±.127

THIRD ANGLE PROJECTION



DO NOT SCALE DRAWING

SIZE	QTY	SYM	PLTD	TOL
0.2	22	+	YES	+/-0.08
0.8	16	X	YES	+/-0.08
1.6	6	□	YES	+/-0.13
1.8	2	◇	NO	+/-0.13
2.4	7	⊗	YES	+/-0.25