

DEMO CIRCUIT 1050A

LT3503EDCB

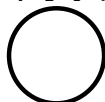
(408) 432-1900 www.linear.com

1.2A, 2.2MHz STEP-DOWN SWITCHING
REGULATOR IN 2mmX3mm DFN

LTC CONFIDENTIAL - FOR CUSTOMER USE ONLY

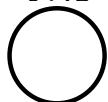
VIN (V)	IOUT (A)
> 5.5V	1A
> 8.5V	1.2A

VOUT

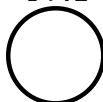


3.3V

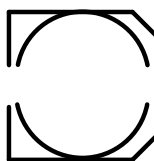
GND



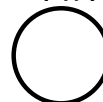
GND



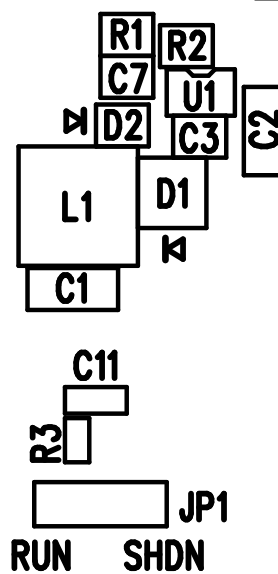
C9



VIN



4.5V-20V



LINEAR TECHNOLOGY CORPORATION

DC1050A REV 2

09/29/06

TOP SILKSCREEN