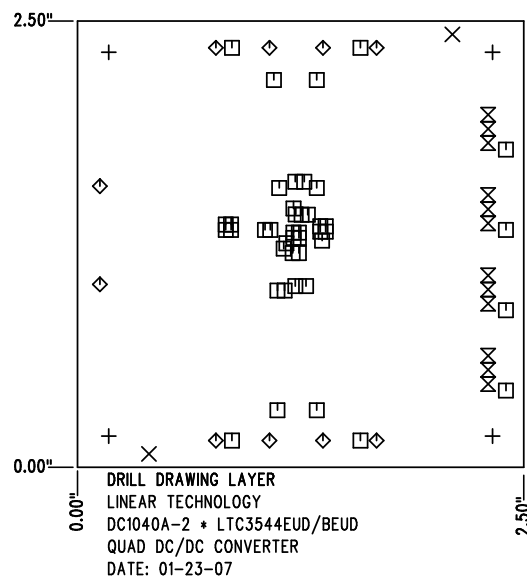
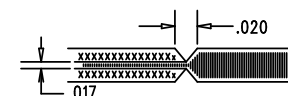


REVISIONS			
REV	DESCRIPTION	APPR	DATE
A-2	FINAL FABRICATION	VK	01-23-07


SIZE	QTY	SYM	PLATED	TOL
0.188	4	+	YES	+/-0.003"
0.07	2	×	NO	+/-0.003"
0.01	43	□	YES	+/-0.003"
0.064	10	◇	YES	+/-0.003"
0.035	12	⊗	YES	+/-0.003"

NOTES: UNLESS OTHERWISE SPECIFIED

- FAB PER IPC-A-600
- MATERIAL: EPOXY FIBERGLASS, NEMA GRADE FR-4
FINISHED THICKNESS TO BE 0.062" +/- .005"
TOTAL OF 4 LAYERS WITH 2 OZ. CU ON THE
OUTER LAYERS AND 1 OZ. CU ON THE INNER LAYERS.
FLAMABILITY RATING: 94 V-0 MINIMUM .
- SIZE: CUT TO DIMENSIONS AND TOLERANCES SHOWN.
0.00" ARE PRIMARY DATUMS.
- DRILLING: DRILL HOLES PER SCHEDULE. PLATE THROUGH
HOLES WITH COPPER, 0.001" THICK MIN.
ALL HOLE SIZES ARE SPECIFIED AFTER PLATING.
HOLE LOCATION TOLERANCES ARE +/-0.003"
IN RELATION TO CENTER
- FINISH: SMOBC USING LPI BOTH SIDES, COLOR GREEN.
WHITE TIN IMMERSION (OMIKRON).
FOR SILKSCREEN: USE WHITE NON-CONDUCTIVE INK.
- DO NOT ALTER ARTWORK e.g. TO ADD LOGO OR DATE CODE.
- SCORING FOR PANELIZED PCB:



SHOWN FROM COMPONENT SIDE

APPROVALS			 <div> 1630 MCCARTHY BLVD MILPITAS, CA 95035 PH: (408)432-1900 LTC CONFIDENTIAL- FOR CUSTOMER USE ONLY </div>	
	INIT	DATE		
DRAWN			TITLE: FABRICATION DRAWING QUAD DC/DC CONVERTER	
CHECK				
DESIGN	KIM T.	01-23-07	SIZE A DEMO DC1040A-2 LTC3544EUD/BEUD	
ENGR	VICTOR K.	01-23-07		
			REV. A-2	
SCALE = NONE			SHT 1 of 1	