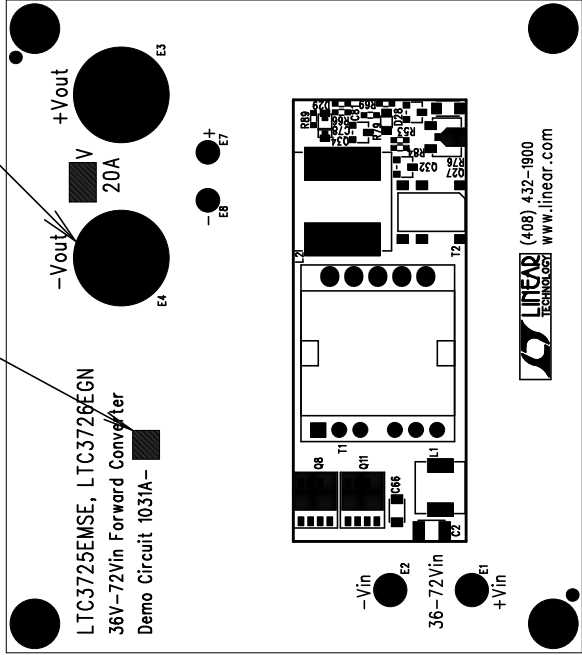


REVISIONS			
REV	DESCRIPTION	APPR	DATE

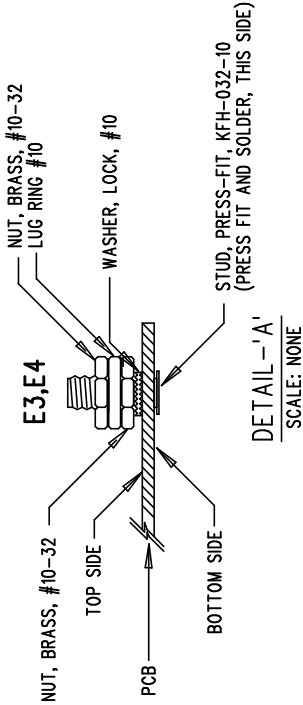
MARK VERSION PER BOM

DETAIL - 'A'
2 PLCS




NOTES : Unless Otherwise Specified

1. BREAK BOARDS FROM THE PANEL WHEN ASSEMBLY IS COMPLETE.
2. OPTIONAL COMPONENTS ARE UNSTUFFED AND SHOULD BE FREE OF SOLDER AFTER ASSEMBLY.



ASSY DRAWING

<div>APPROVALS</div>					1630 McCarthy Blvd. Milpitas, CA 95035 Ph: (408)432-1900	
<div><div></div><div>DRAWN</div></div>			<div>INIT</div>		<div>DATE</div>	
<div><div></div><div>CHECK</div></div>						
<div><div></div><div>DESIGN</div></div>			JUNE WU		12/5/05	
<div><div></div><div>ENGR</div></div>			K. Mathews		12/5/25	



1630 McCarthy Blvd.
Milpitas, CA 95035
PH: (408)432-1900

LTC3725EMSE, LTC3726ECN
36V-72Vin Forward Converter

DC1031A

SHT 1 of 1