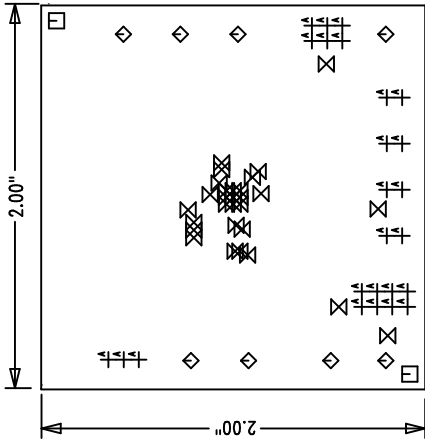


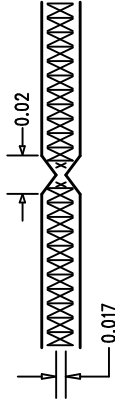
| REVISIONS | | |
|-----------|-------------|------|
| REV | DESCRIPTION | DATE |
| | | |

NOTES : Unless Otherwise Specified

1. FAB PER IPC-A-600.
2. MATERIAL: EPOXY FIBERGLASS, NEMA GRADE FR-4.
2 OZ. COPPER FINISH ON OUTER LAYERS.
1 OZ. COPPER FINISH ON INNER LAYERS.
THICKNESS .062 +/--.006 TOTAL OF 4 LAYERS.
FLAMMABILITY RATING: 94 V-0 MINIMUM .
3. SIZE: DIMENSIONS AND TOLERANCES SHOWN.
0.000 ARE PRIMARY DATUMS.
4. DRILLING: DRILL HOLES PER SCHEDULE. PLATE THROUGH HOLES WITH COPPER, .001 INCH THICK MIN. ALL HOLE SIZES ARE SPECIFIED AFTER PLATING.
HOLE LOCATION TOLERANCES ARE +/--.003 INCH IN RELATION TO CENTER
5. FINISH: SMOBC USING LPI BOTH SIDES COLOR GREEN.
IMMERSION GOLD PLATING
6. SILKSCREEN : USING WHITE NON-CONDUCTIVE EPOXY INK.
7. DO NOT ALTER ARTWORK TO ADD LOGO OR DATE CODE
BUT YOU MAY MODIFY PAD SIZE TO MEET END FINISH.
8. PCBs ARE TO BE RoHS COMPLIANT.
9. SCORING:




Top Side



Fabrication Drawing

| SIZE | QTY | SYM | PLATED | TOL |
|-------|-----|-----|--------|----------|
| 0.07 | 2 | □ | NO | +/-0.003 |
| 0.095 | 8 | ◇ | YES | +/-0.003 |
| 0.01 | 29 | ⊗ | YES | +/-0.003 |
| 0.035 | 25 | ⊕ | YES | +/-0.003 |

UNLESS OTHERWISE SPECIFIED
DIMENSIONS ARE IN INCHES
TOLERANCES ON ANGLE ± 1
2 PLACE ±.01 3 PLACE ±.005
INTERPRET DIM AND TOL
PER ASME Y14.5M - 1994

| | | | | | | | |
|--------------|-----------|--|---|--|---------|------|---|
| APPROVALS | |  LINEAR TECHNOLOGY | | 1630 McCarthy Blvd. Milpitas, CA 95035 PH: (408)432-1900 | | | |
| | | | | | | | |
| DRAWN | INIT | | | | | | |
| CHECK | DATE | | | | | | |
| DESIGN | 2/20/08 | | | | | | |
| ENGR | Helen | TITLE: LTC3602EUF High Input Voltage 2.5A Monolithic Synchronous Buck Regulator | | | | | |
| | Tom Gross | | | | | | |
| | | | | | | | |
| | | | | | | | |
| | | | | | | | |
| | | SIZE | A | DEMO | DC1015A | REV. | A |
| SCALE = NONE | | DES-250 | | SHEET 1 of 1 | | | |