

* Non-Automotive version used due to distributor availability

6

5

4

3

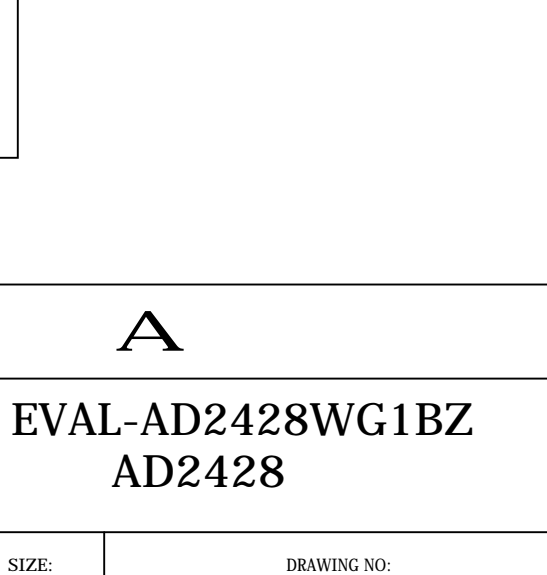
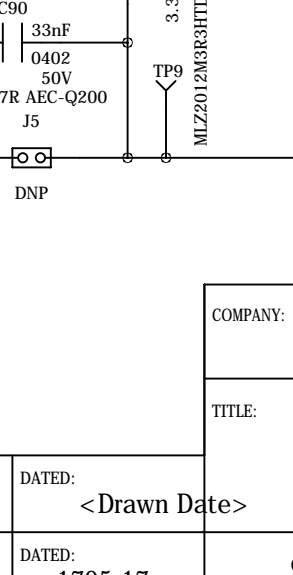
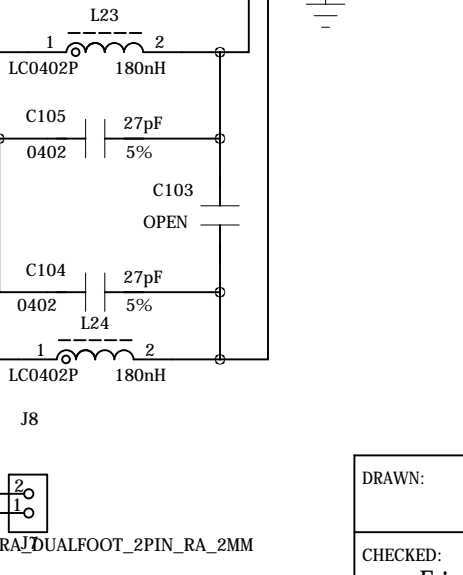
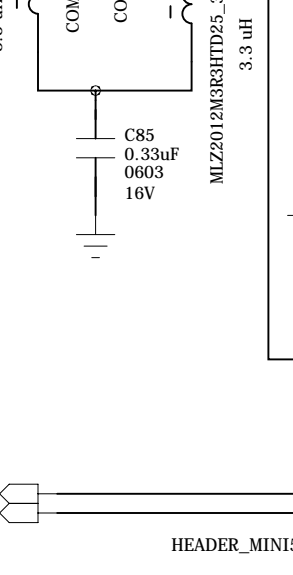
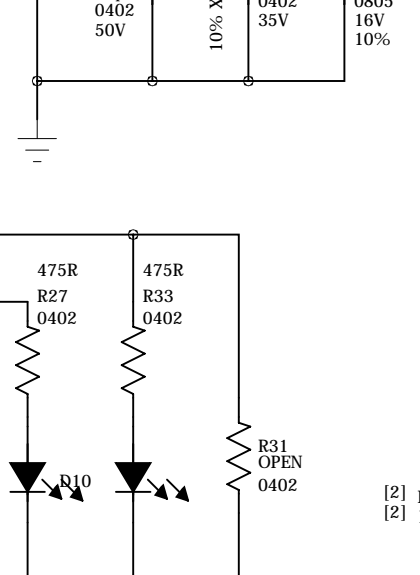
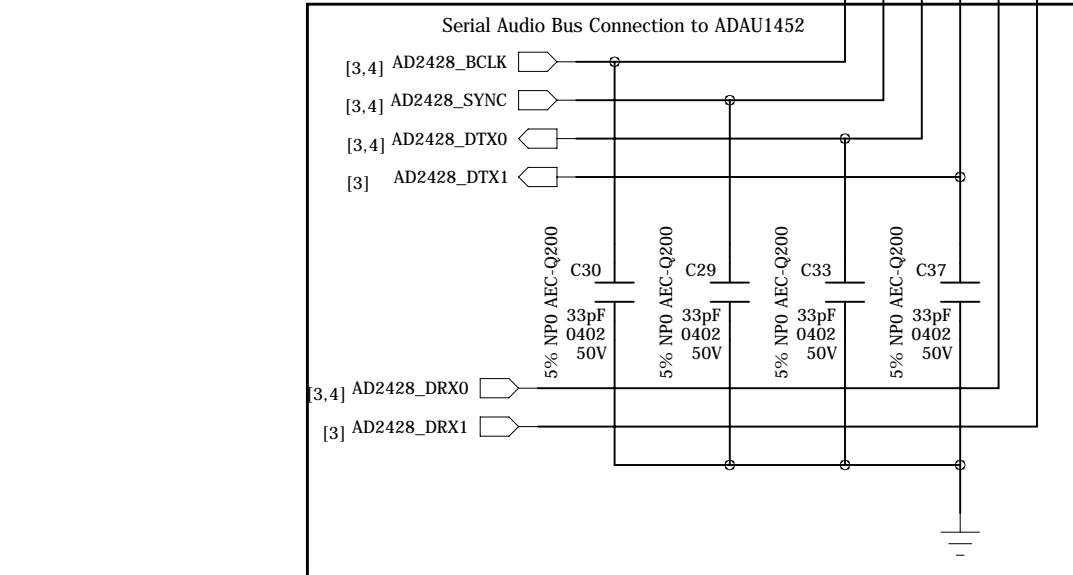
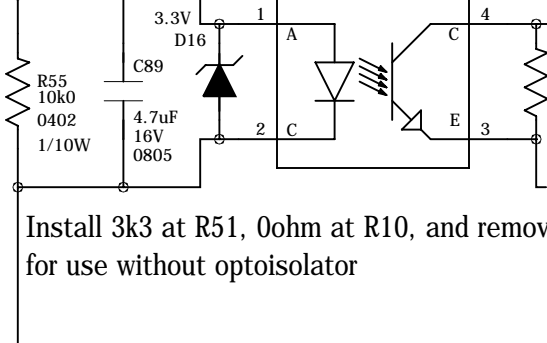
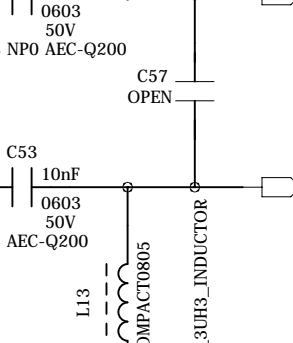
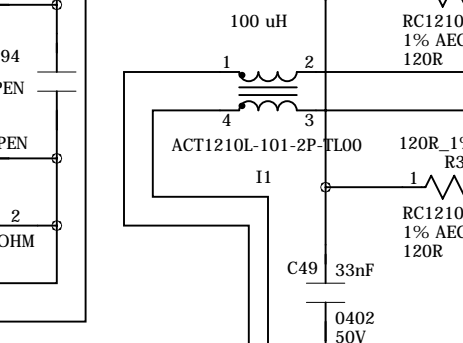
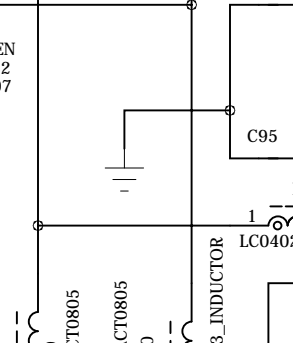
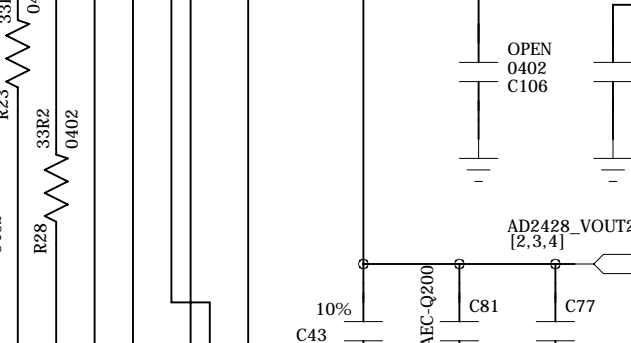
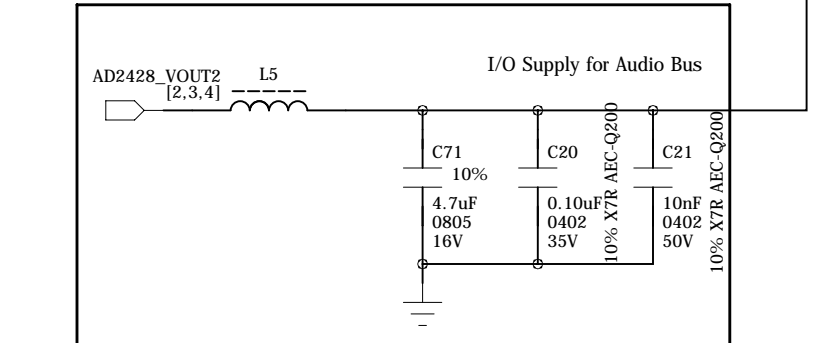
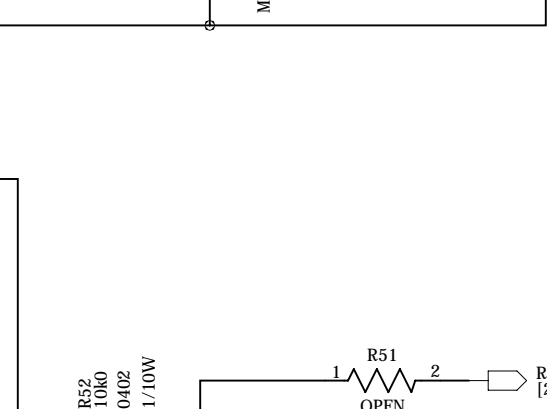
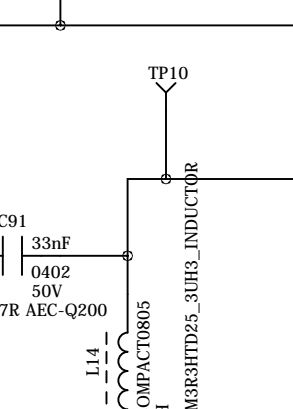
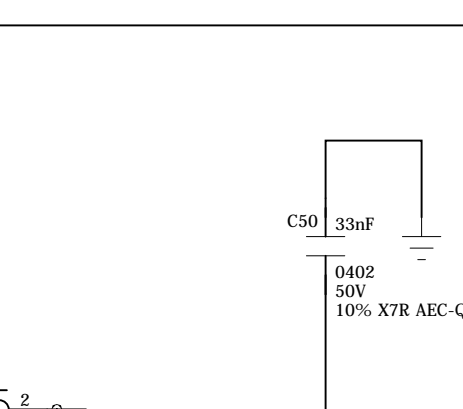
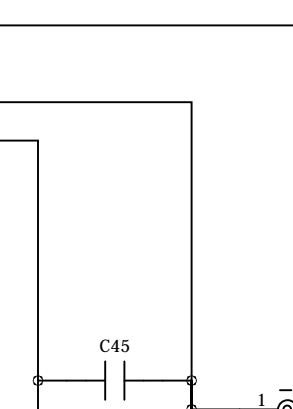
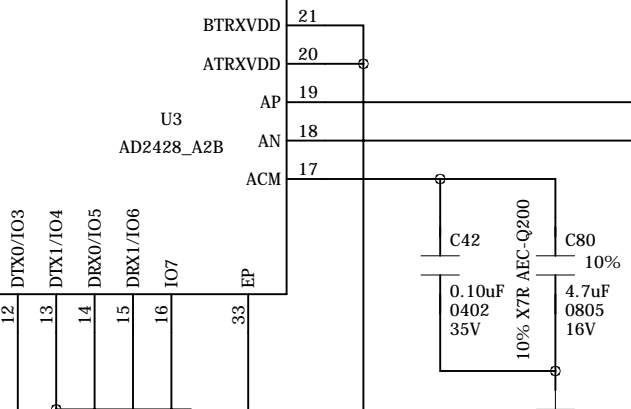
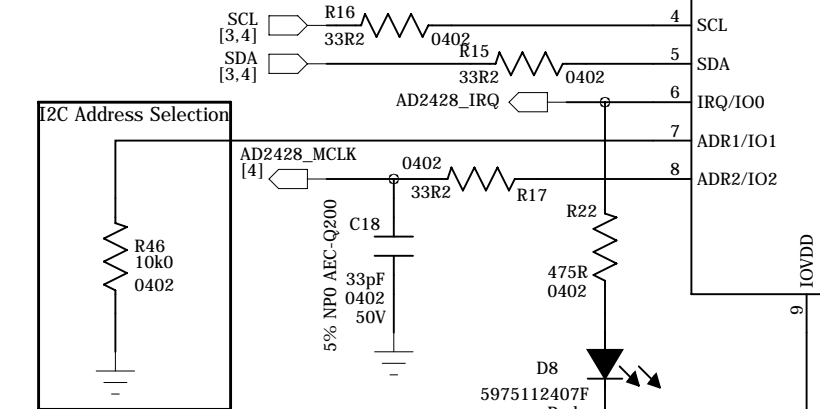
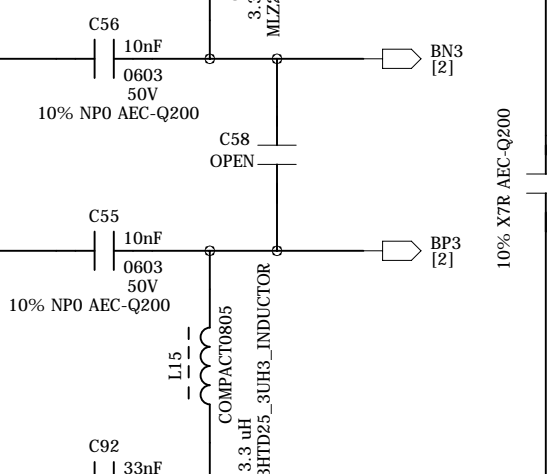
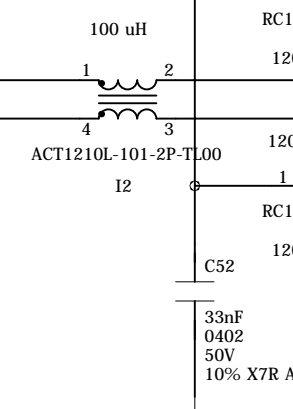
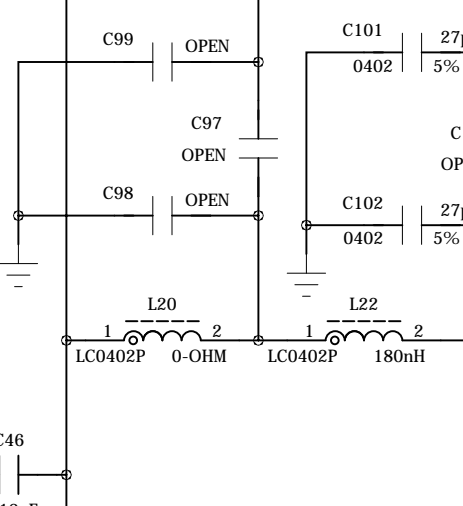
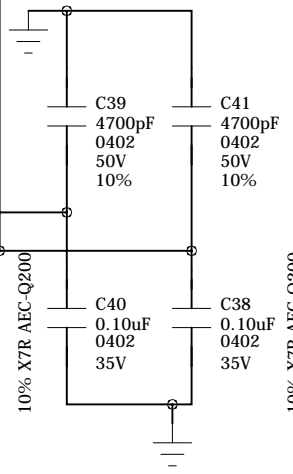
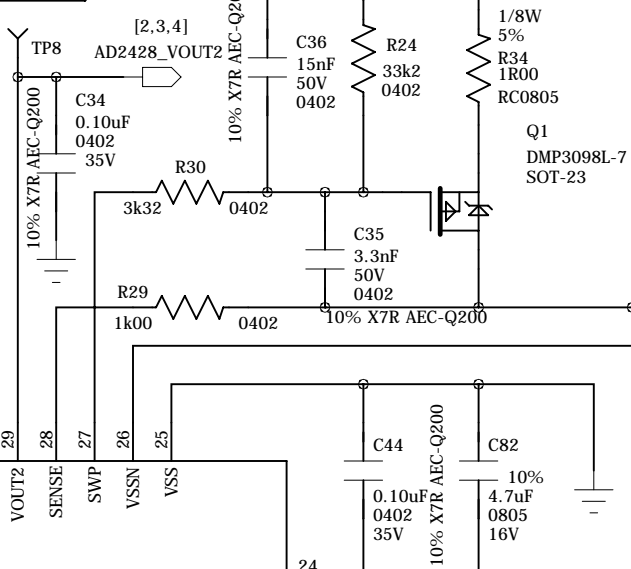
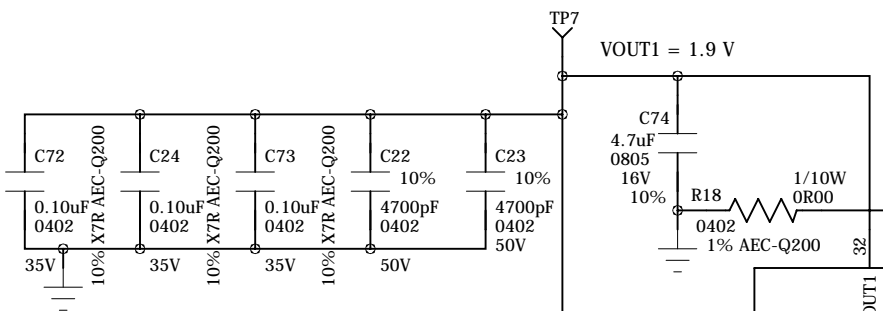
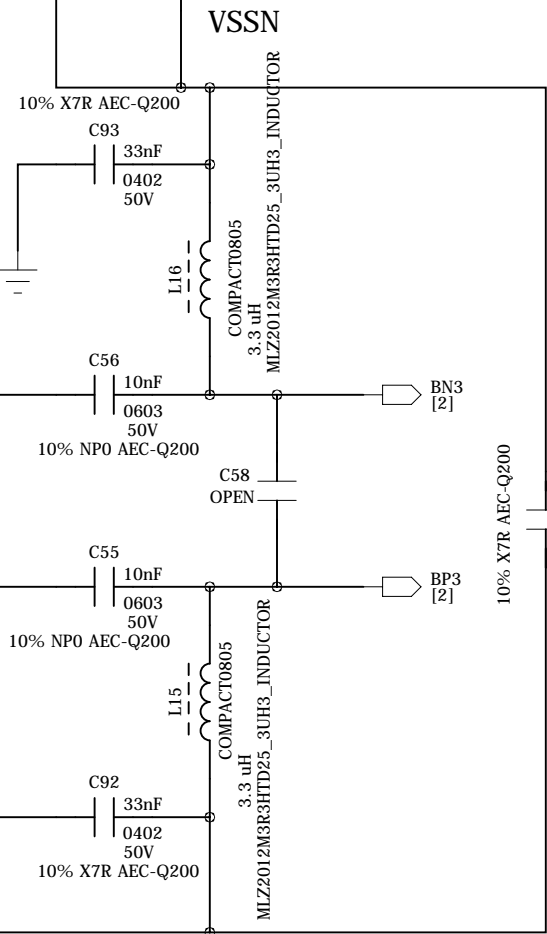
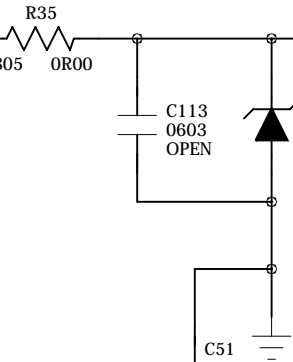
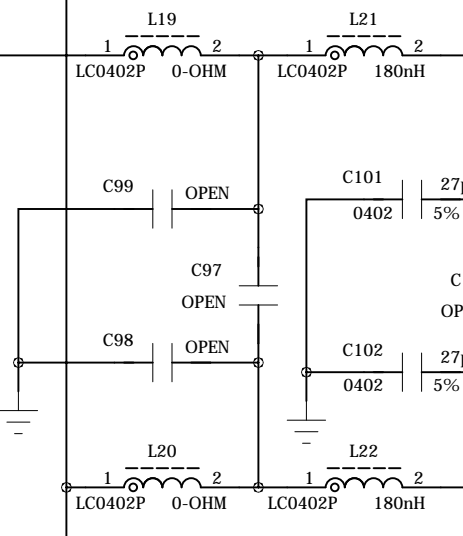
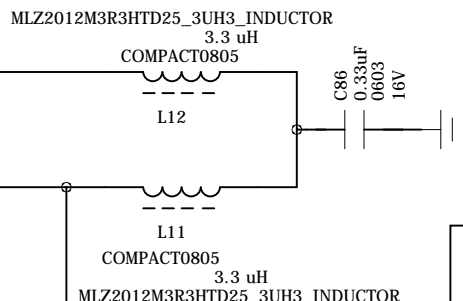
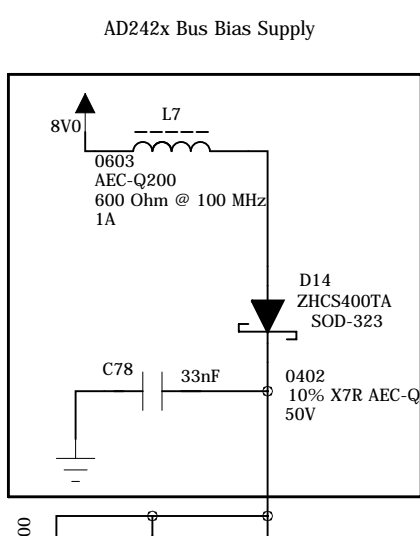
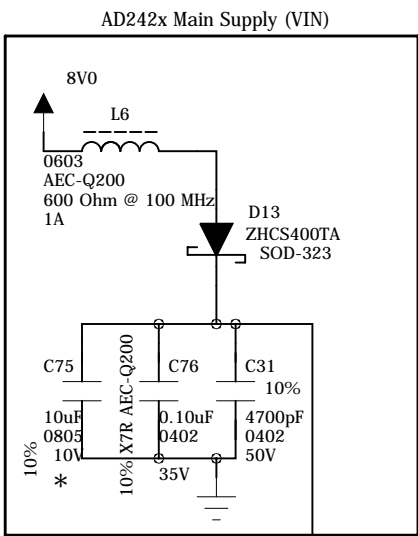
2

1

REVISION RECORD			
LTR	ECO NO:	APPROVED:	DATE:

AD242x I2C Address (7-bit)
0x68 Master
0x69 Slaves

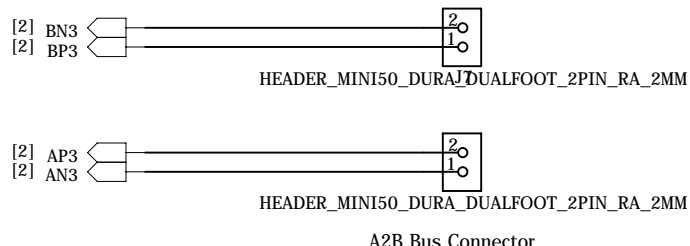
AD242x I2C Address (8-bit)
0xD0 Master
0xD2 Slaves



Install 3k3 at R51, 0ohm at R10, and remove R9 for use without optoisolator

COMPANY: A			
TITLE: EVAL-AD2428WG1BZ AD2428			
DRAWN: Eric Cline	DATED: <Drawn Date>	CODE: <Code>	SIZE: C
CHECKED: PCB PACKAGING Eric M. Cline	DATED: 1705.17	DRAWING NO: EVAL-AD2428WG1BZ	REV: 2.3
QUALITY CONTROL: Martin Kessler	DATED: 2/19/2014	SCALE: <Scale>	
RELEASED: <Released By>	DATED: <Release Date>	SHEET: 2 OF 5	

DRAWN: Eric Cline	DATED: <Drawn Date>
CHECKED: PCB PACKAGING Eric M. Cline	DATED: 1705.17
QUALITY CONTROL: Martin Kessler	DATED: 2/19/2014
RELEASED: <Released By>	DATED: <Release Date>



6

5

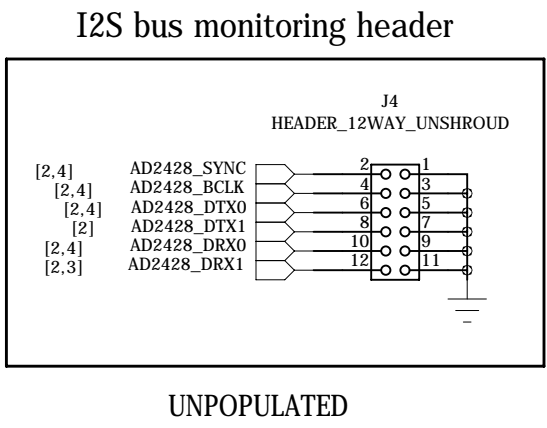
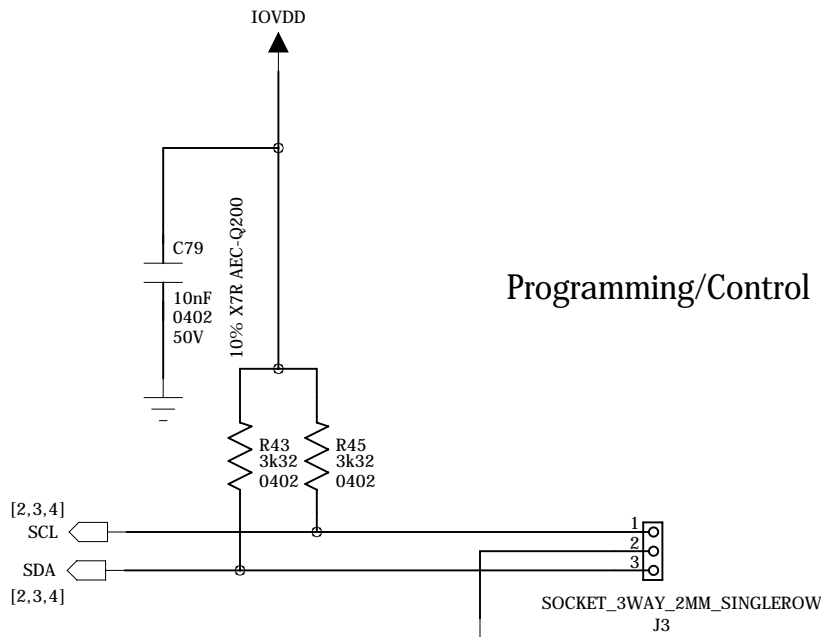
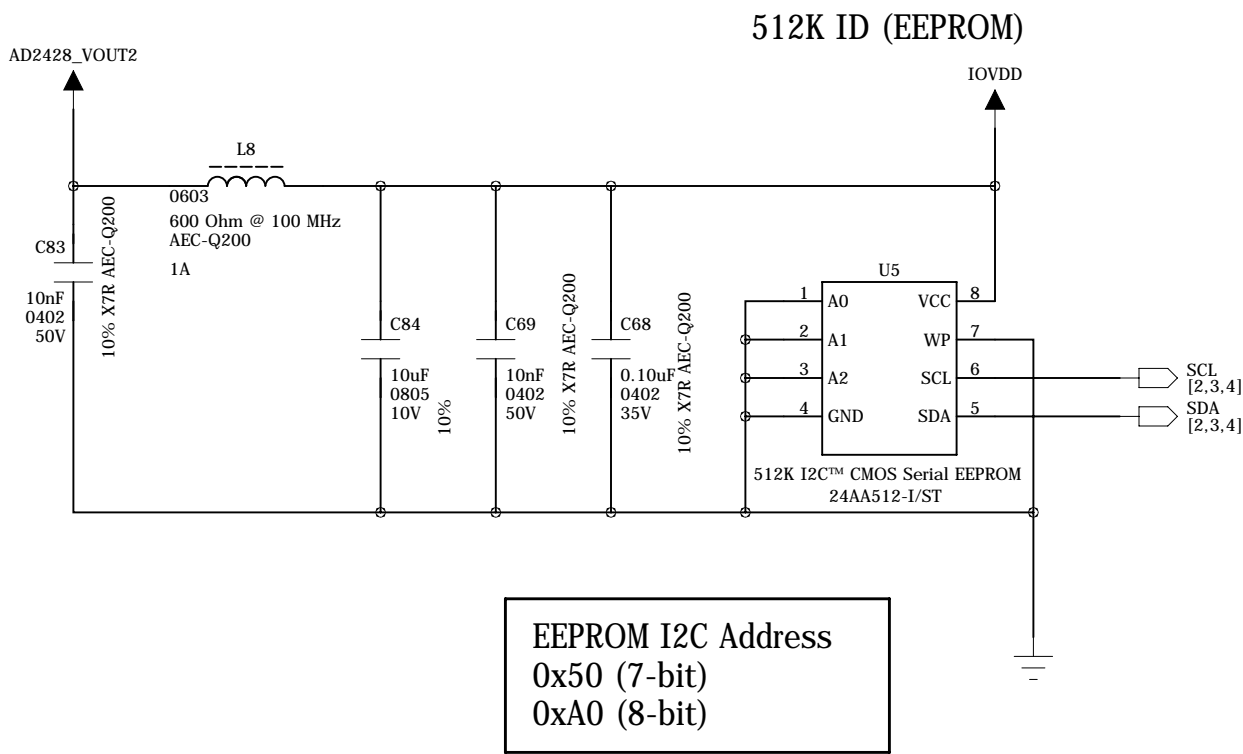
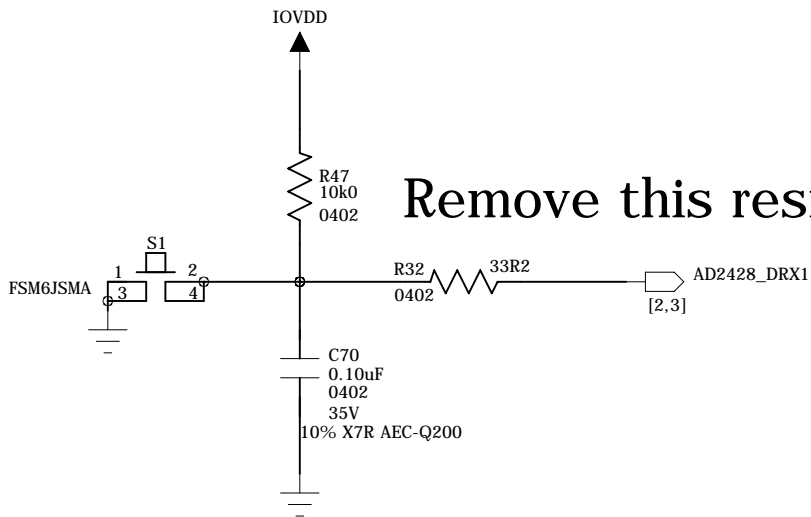
4

3

2

1

REVISION RECORD			
LTR	ECO NO:	APPROVED:	DATE:



COMPANY: A			
TITLE: EVAL-AD2428WG1BZ AD2428_PERIPHERALS			
CODE: <Code>	SIZE: C	DRAWING NO: EVAL-AD2428WG1BZ	REV: 2.3
SCALE: <Scale>			SHEET: 3 5

DRAWN: Eric Cline	DATED: <Drawn Date>
CHECKED: PCB PACKAGING Eric M. Cline	DATED: 1705.17
QUALITY CONTROL: Martin Kessler	DATED: 2/19/2014
RELEASED: <Released By>	DATED: <Release Date>

6

5

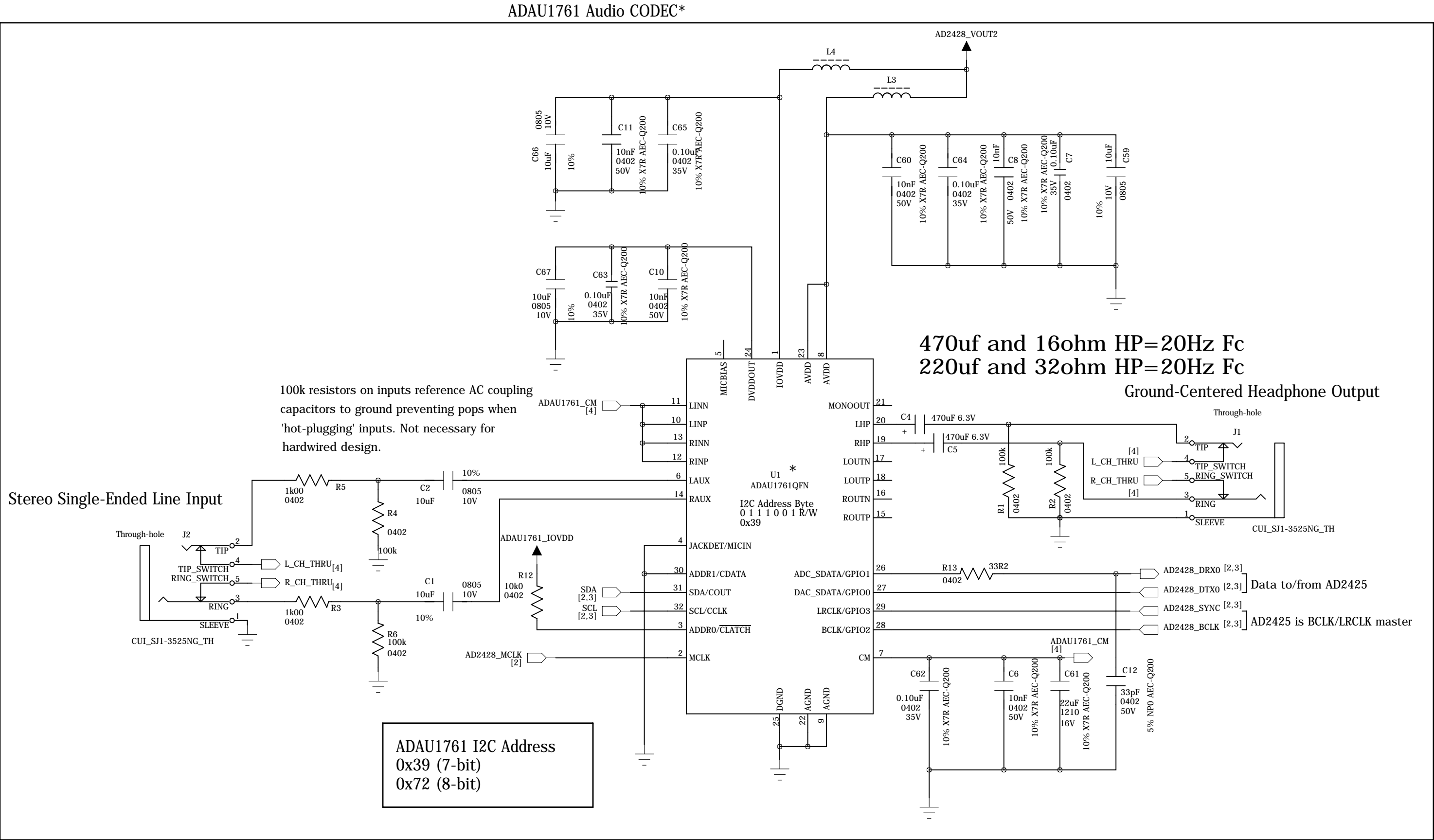
4

3

2

1

REVISION RECORD			
LTR	ECO NO:	APPROVED:	DATE:



D

C

B

A

D

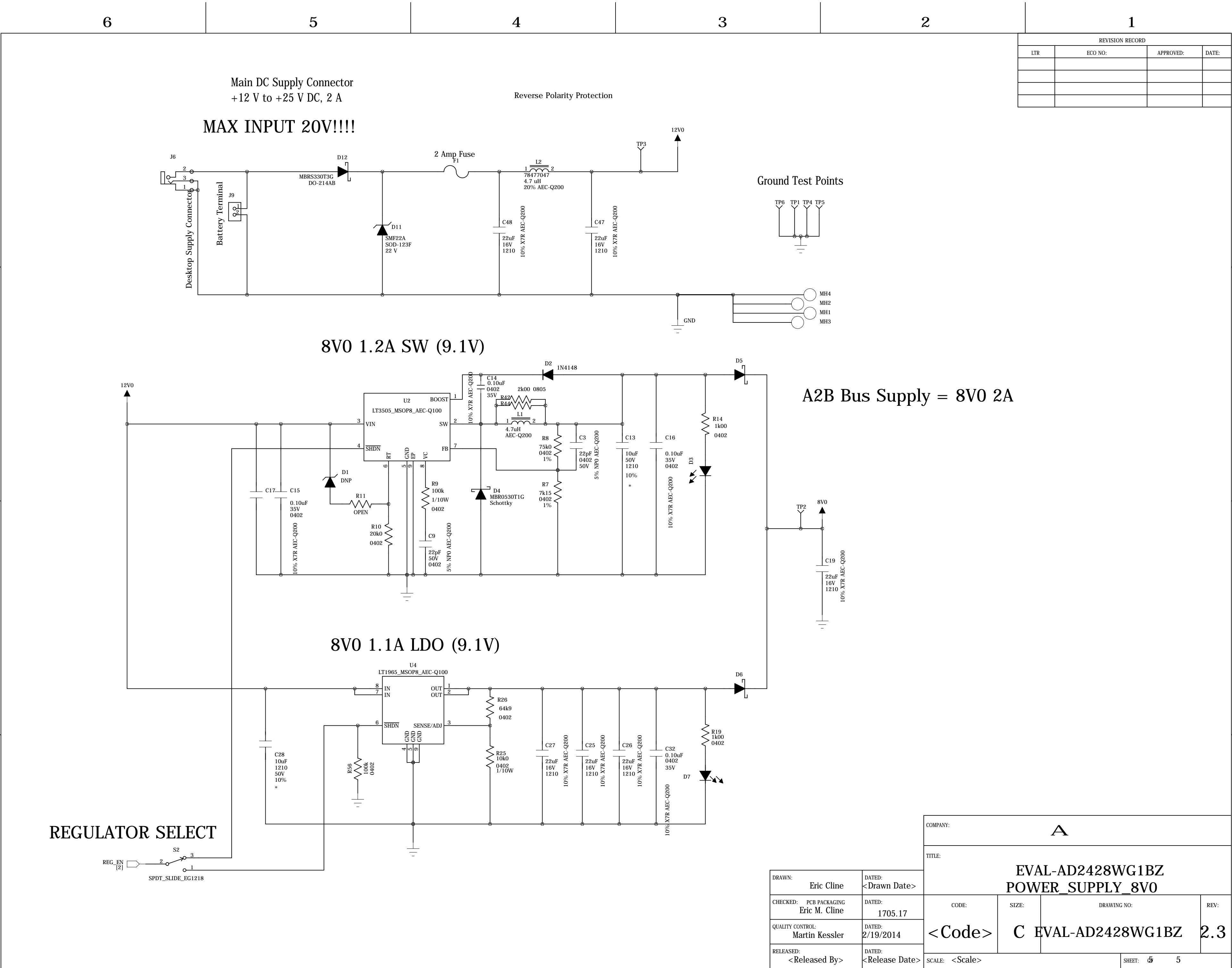
C

B

A

DRAWN:	Eric Cline	DATED:	<Drawn Date>
CHECKED:	PCB PACKAGING Eric M. Cline	DATED:	1705.17
QUALITY CONTROL:	Martin Kessler	DATED:	2/19/2014
RELEASED:	<Released By>	DATED:	<Release Date>

COMPANY: A			
TITLE: EVAL-AD2428WG1BZ ADAU1761_CODEC			
CODE:	SIZE:	DRAWING NO:	REV:
<Code>	C	EVAL-AD2428WG1BZ	2.3
SCALE: <Scale>			SHEET: 4 5



REVISION RECORD			
LTR	ECO NO:	APPROVED:	DATE:

DRAWN:	Eric Cline	DATED:	<Drawn Date>
CHECKED:	PCB PACKAGING Eric M. Cline	DATED:	1705.17
QUALITY CONTROL:	Martin Kessler	DATED:	2/19/2014
RELEASED:	<Released By>	DATED:	<Release Date>

COMPANY:			
A			
TITLE:			
EVAL-AD2428WG1BZ POWER_SUPPLY_8V0			
CODE:	SIZE:	DRAWING NO:	REV:
<Code>	C	EVAL-AD2428WG1BZ	2.3
SCALE: <Scale>			SHEET: 5 5