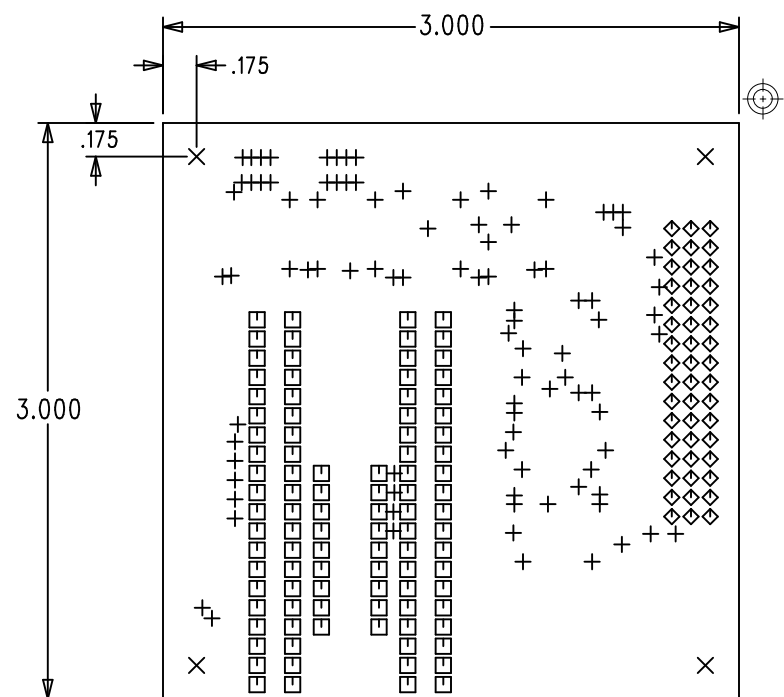


DO NOT SCALE PRINT

REVISION				
ZONE	LTR	DESCRIPTION	DATE	APPROVED
	1	ENGINEERING RELEASE	01/22/10	M.LYONS



HITTITE MICROWAVE
PCB #128534-1
DRILL DRAWING

NOTES:

MATERIALS AND TOLERANCES:

1. MATERIAL: TYPE FR4 , 1/2 OZ COPPER, DOUBLE SIDED, OVERALL STACKUP AS SHOWN.
2. FINISH: HASL SOLDER WITH 60/40 Sn/Pb (±10%).
3. SOLDERMASK: SMOBC LPI BOTH SIDES COLOR: GREEN
4. SILKSCREEN BOTH SIDES WITH WHITE NON-CONDUCTIVE INK. ENSURE SILKSCREEN DOES NOT COVER COMPONENT PADS - CLIP SILKSCREEN IF NECESSARY.
5. MANUFACTURE PER IPC-6012 CLASS 2.
6. ALL HOLES TO BE LOCATED WITHIN ±.003" OF CENTER OF PAD OR OTHER TRUE POSITION.
7. COPPER PLATE ALL HOLES MINIMUM .001" COPPER WALL THICKNESS.
8. "SIZE" IN DRILL LEGEND IS IN MILS AND REFERS TO FINISHED HOLE SIZE.
9. WARPAGE: <.008" PER LINEAR INCH.
10. FRONT TO BACK REGISTRATION: ±.003" MAX.

SPECIAL REQUIREMENTS:

11. NO SPECIAL REQUIREMENTS FOR THIS BUILD.

VENDOR NOTES:

12. VENDOR TO COMPARE IPC NET LIST TO GERBER FILES FOR CONTINUITY. ANY DISCREPANCIES MUST BE REPORTED TO HITTITE MICROWAVE.
13. VENDOR MAY ADD E-TEST STAMP TO PCB. VENDOR SHALL NOT ADD NAME, LOGO, DATE CODE, UL LISTING OR ANY OTHER MARKING TO ANY VISIBLE LAYER.
14. BOARDS MUST PASS VISUAL INSPECTION PER IPC-A-600 CLASS 2.
15. FINISHED BOARDS ARE TO BE BARE BOARD TESTED.

SIZE	QTY	SYM	PLATED	TOL
14	95	+	YES	+/-3
35	98	□	YES	+/-3
40	48	◇	YES	+/-3
125	4	×	YES	+/-3

	SILKSCREEN-01
	SOLDERMASK-01
	METAL-01 1/2oz Cu (.0007") .062" ±.007" FR4
	METAL-02 1/2oz Cu (.0007") SOLDERMASK-02

LAYER STACKUP

PROPRIETARY TO HITTITE MICROWAVE CORPORATION

UNLESS OTHERWISE SPECIFIED:		DWN BY:		HITTITE MICROWAVE CORPORATION 20 Alpha Road Chelmsford, MA 01824		
DIMENSIONS ARE IN INCHES (MM)		MARTIN LYONS 01/06/2010				
DRAWING PRACTICES PER MIL-STD-100		ENGINEER:		TITLE PCB, USB I/F WITH PAR. I/O		
TOLERANCES:		DON YOUNG				
.XX	+/- 0.010			SIZE	CODE ID NO.	
.XXX	+/- 0.005			B	1CN88	
.XXXX	+/- 0.002			DRAWING NO.		REV
ANGLES	+/- .5 DEG			128534		1
		SCALE:		WT	SHEET 1 of 1	