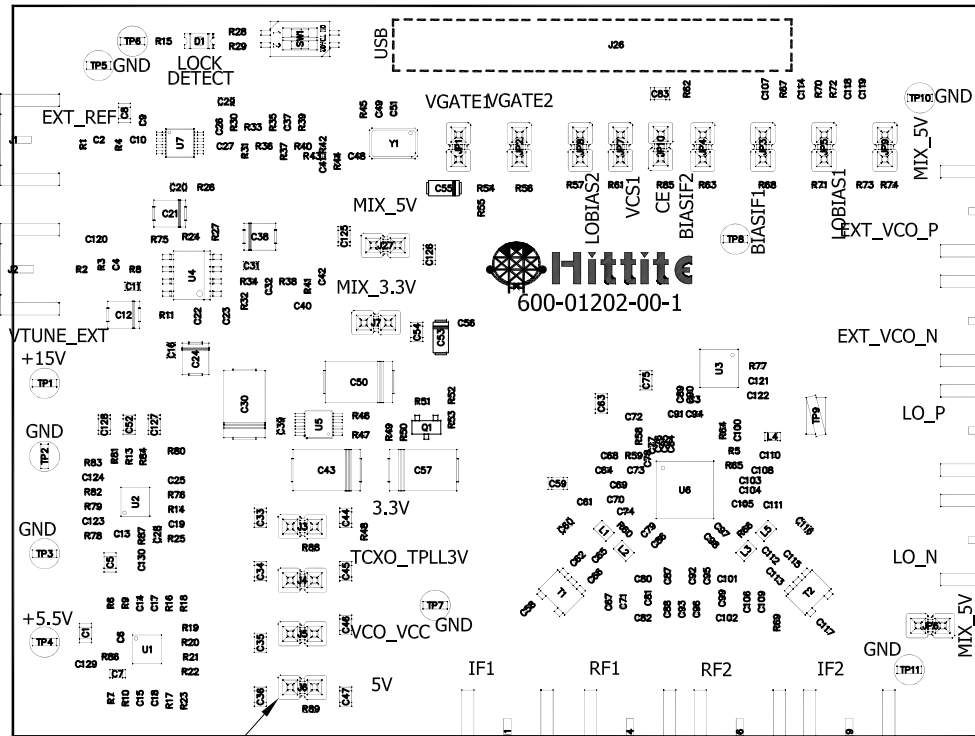


REVISION				
ZONE	LTR	DESCRIPTION	DATE	APPROVED
B		CHANGE AS PER CP121507	11/12/12	V. VADUVA
C		CHANGE AS PER CP131113	09/12/13	V. VADUVA
D		CHANGE AS PER CP141242	09/11/14	D. ACEVAL
E		CHANGE AS PER CP151128	10/01/15	Y. AYDIN

TOP VIEW



- 3 PCB
- 4 SOLDER

- NOTES:
1. SOLDER QUALITY TO IPC-A-610, CLASS 2.
 2. MANUALLY DISPENSE SOLDER (ITEM 4) FOR ALL COMPONENTS.
 3. J1,J2,J11,J14,J16,J19,J22-J25 ATTACH TO PCB WITH CENTER PIN ON TOP SIDE TRACE. MANUALLY DISPENSE SOLDER (ITEM 4) TO CENTER PIN AND GROUND LEADS, TOP AND BOTTOM. AFTER REFLOW, SOLDER MUST JOIN CONNECTOR AND PCB EDGE.
 4. REFER TO LM 090-00757-00 FOR DEPOP PARTS
 5. INSTALL ITEM 6 ON JP1-JP10, J3-J7, J27
 6. INSTALL ITEM 82 BOTTOM SIDE, UNDER U6

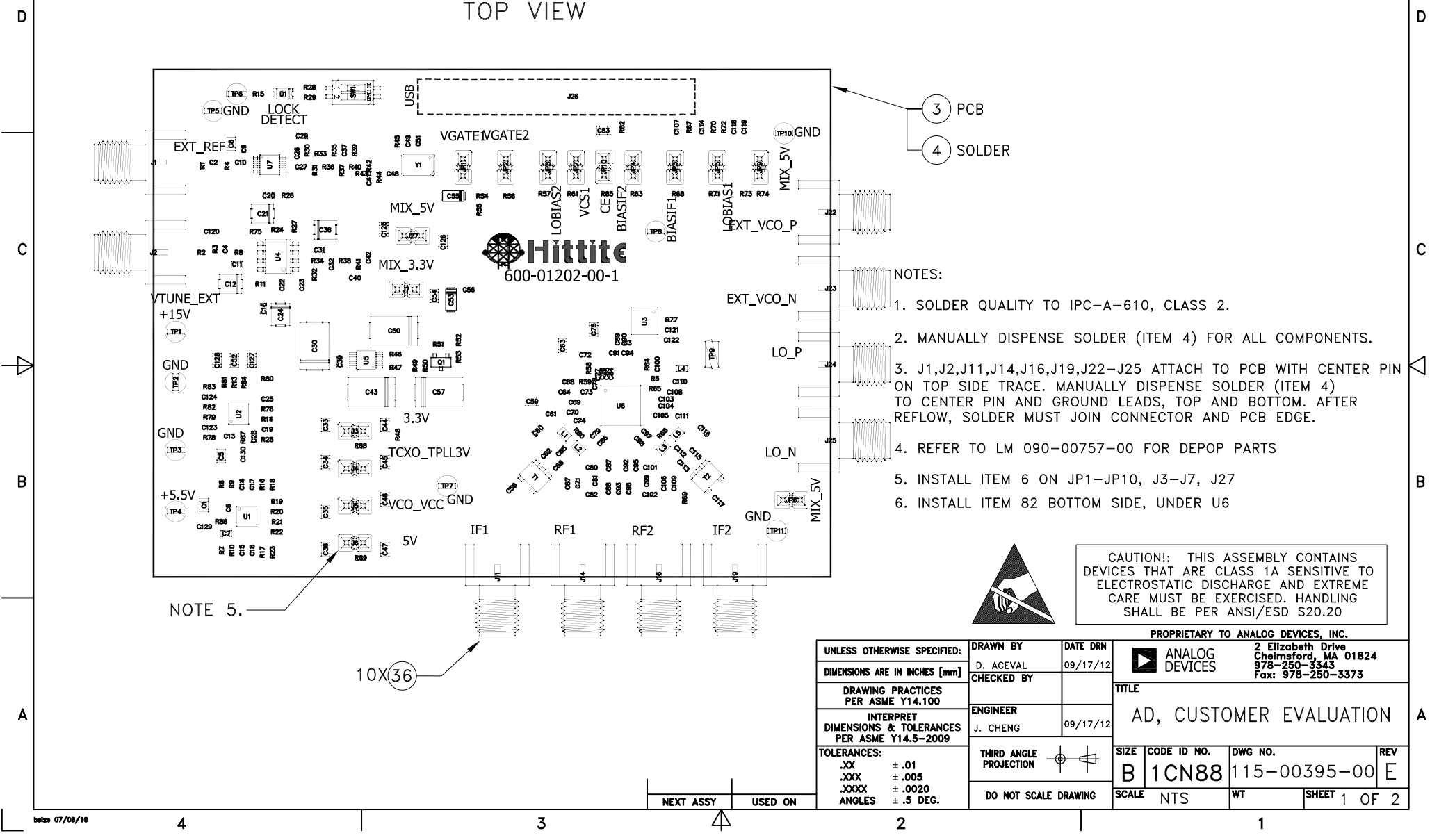
CAUTION! THIS ASSEMBLY CONTAINS DEVICES THAT ARE CLASS 1A SENSITIVE TO ELECTROSTATIC DISCHARGE AND EXTREME CARE MUST BE EXERCISED. HANDLING SHALL BE PER ANSI/ESD S20.20



NOTE 5.

10X(36)

UNLESS OTHERWISE SPECIFIED:		DRAWN BY	DATE DRN	ANALOG DEVICES 2 Elizabeth Drive Chelmsford, MA 01824 978-250-3343 Fax: 978-250-3373	
DIMENSIONS ARE IN INCHES [mm]		D. ACEVAL	09/17/12	TITLE AD, CUSTOMER EVALUATION	
DRAWING PRACTICES PER ASME Y14.100		CHECKED BY			
INTERPRET DIMENSIONS & TOLERANCES PER ASME Y14.5-2009		ENGINEER	09/17/12	SIZE B CODE ID NO. 1CN88 DWG NO. 115-00395-00 REV E	
TOLERANCES: .XX ± .01 .XXX ± .005 .XXXX ± .0020 ANGLES ± .5 DEG.		J. CHENG			
NEXT ASSY		THIRD ANGLE PROJECTION		SCALE	NTS
USED ON		DO NOT SCALE DRAWING		WT	SHEET 1 OF 2



4

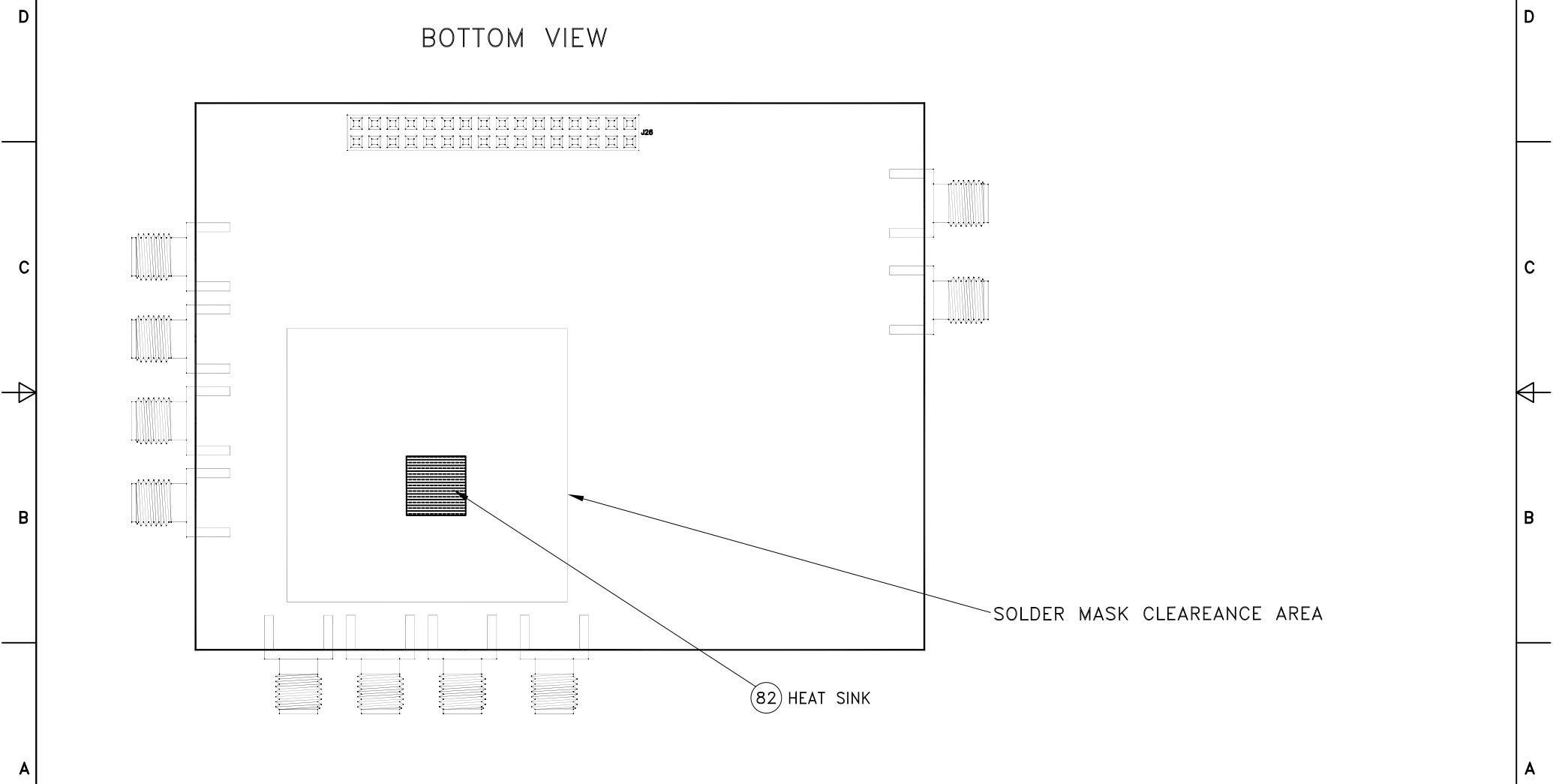
3

2

1

REVISION				
ZONE	LTR	DESCRIPTION	DATE	APPROVED
		SEE SHEET 1		

BOTTOM VIEW



SOLDER MASK CLEARANCE AREA

82 HEAT SINK

PROPRIETARY TO ANALOG DEVICES, INC.

 ANALOG DEVICES	2 Elizabeth Drive Chelmsford, MA 01824 978-250-3343 Fax: 978-250-3373		SIZE B	CODE ID NO. 1CN88	DWG NO. 115-00395-00	REV E
	SCALE NTS	WT	SHEET 2 OF 2			

4

3

2

1