

DC/DC OPTIMIZER PCB

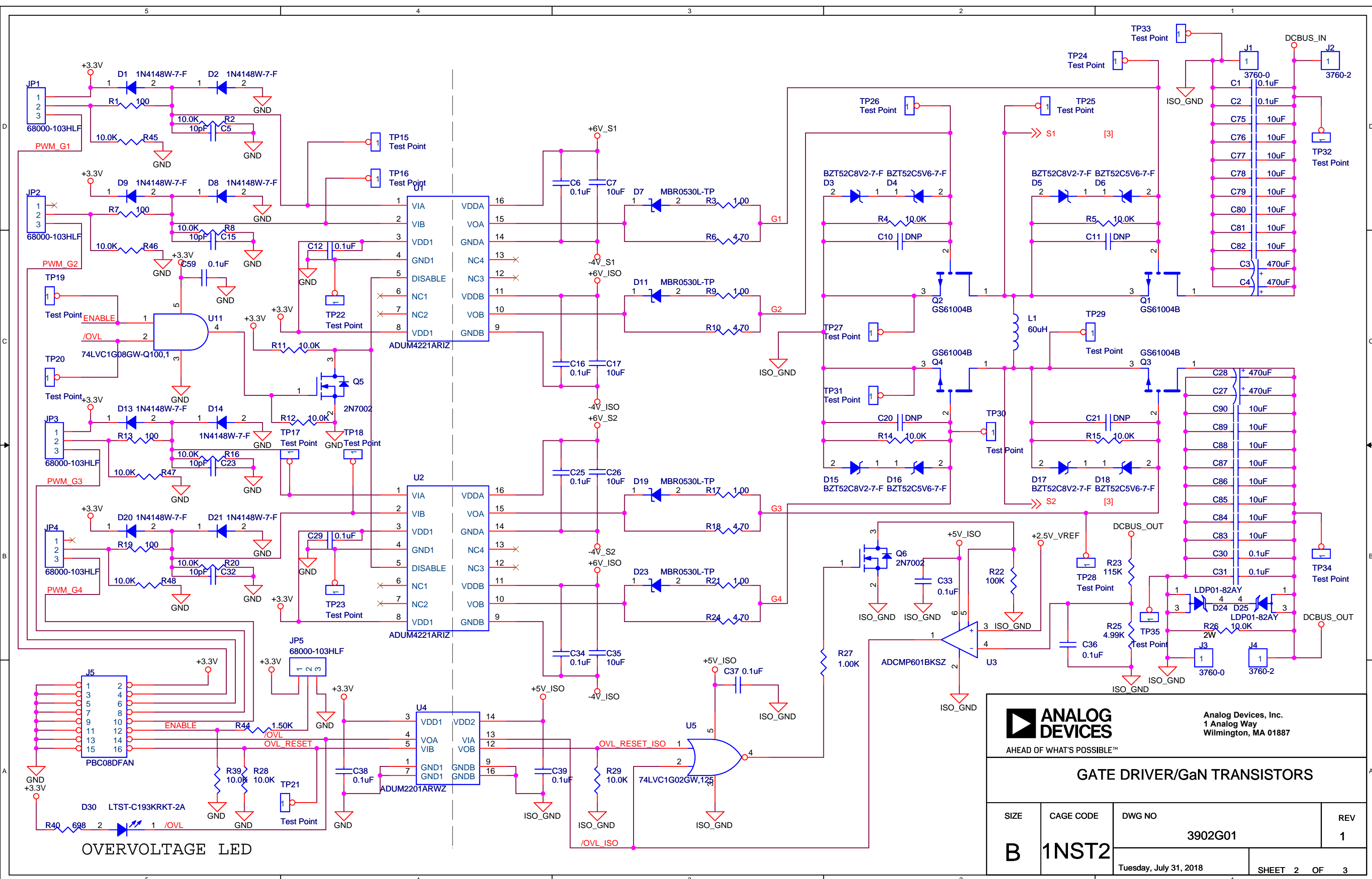
Table of Contents


PAGE	1 :	COVER
PAGE	2 :	GATE DRIVER/GAN TRANSISTORS
PAGE	3 :	POWER SUPPLIES

Revision History

Rev 1: Initial Draft

Information furnished by Analog Devices is believed to be accurate and reliable. However, no responsibility is assumed by Analog Devices for its use, nor for any infringements of patents or other rights of third parties that may result from its use. Specifications subject to change without notice. No license is granted by implication or otherwise under any patent or patent rights of Analog Devices. Trademarks and registered trademarks are the property of their respective owners.		BY	DATE	<div><div><div></div><div>ANALOG DEVICES</div></div><div>AHEAD OF WHAT'S POSSIBLE™</div></div> <div>Analog Devices, Inc. 1 Analog Way Wilmington, MA 01887</div>			
	IR DATE						
	LAST CHANGE						
	DRAWN BY						
	CHECKED BY						
	APPROVED BY			COVER			
				SIZE	CAGE CODE	DWG NO	REV
				B	1INST2	3902G01	1
	BARE PCB P/N						SHEET 1 OF 3
	ASSY PCB P/N			Monday, July 09, 2018			





ANALOG
DEVICES

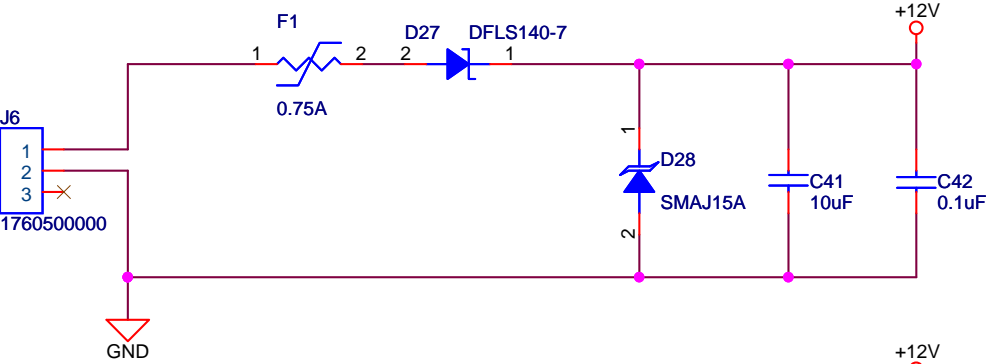
AHEAD OF WHAT'S POSSIBLE™

Analog Devices, Inc.
1 Analog Way
Wilmington, MA 01887

GATE DRIVER/GaN TRANSISTORS

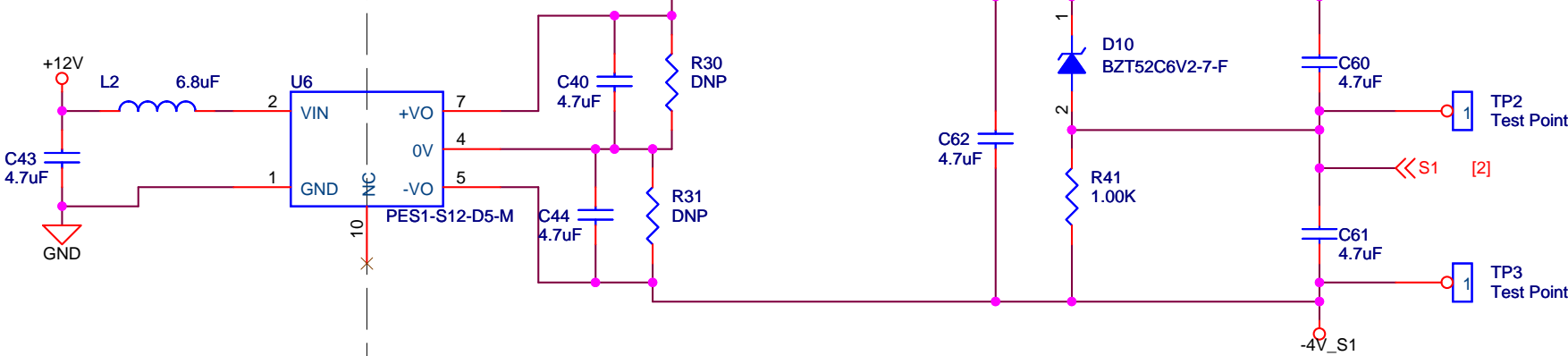
SIZE	CAGE CODE	DWG NO	REV
B	1INST2	3902G01	1
Tuesday, July 31, 2018		SHEET 2 OF 3	

12VDC Input

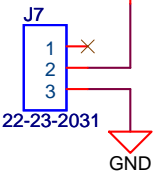


±5V Isolated Power Supply @ 100mA MAX.

High Side Power Supply 1

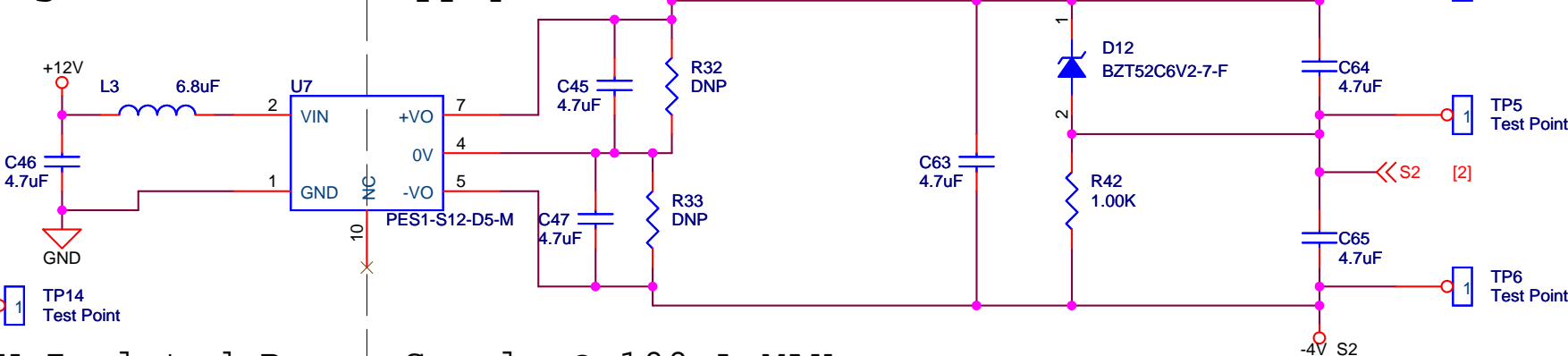


FAN

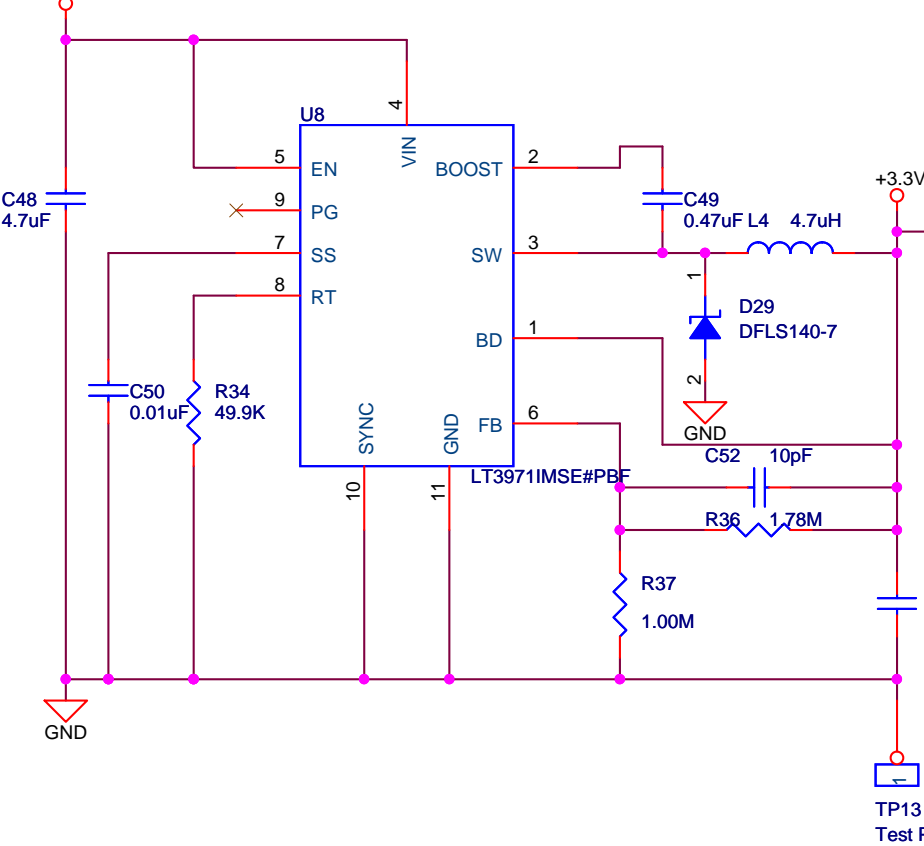


±5V Isolated Power Supply @ 100mA MAX.

High Side Power Supply 2

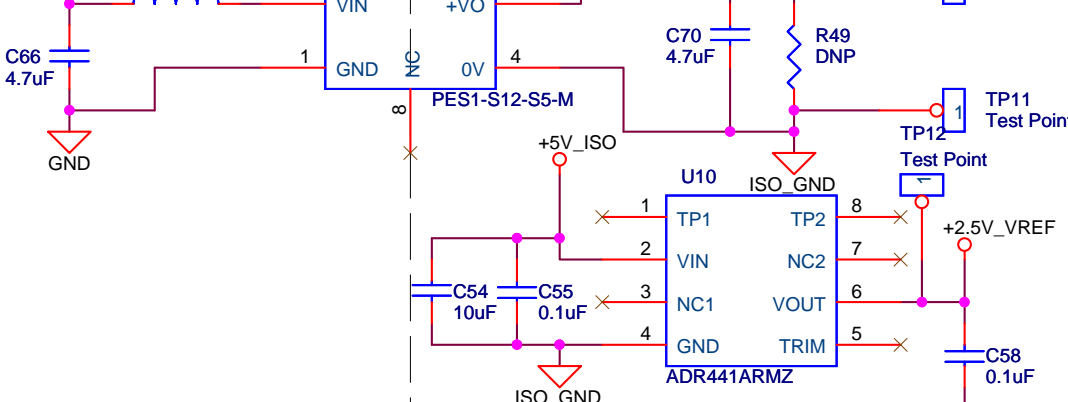
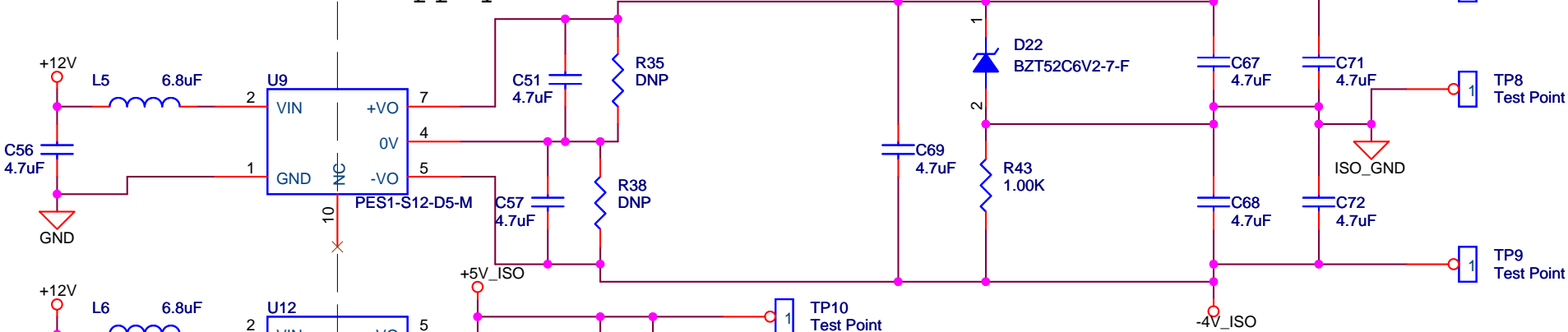


±3.3V Power Supply 1A MAX.




±5V Isolated Power Supply @ 100mA MAX.

Low Side Power Supply



2.5V Reference



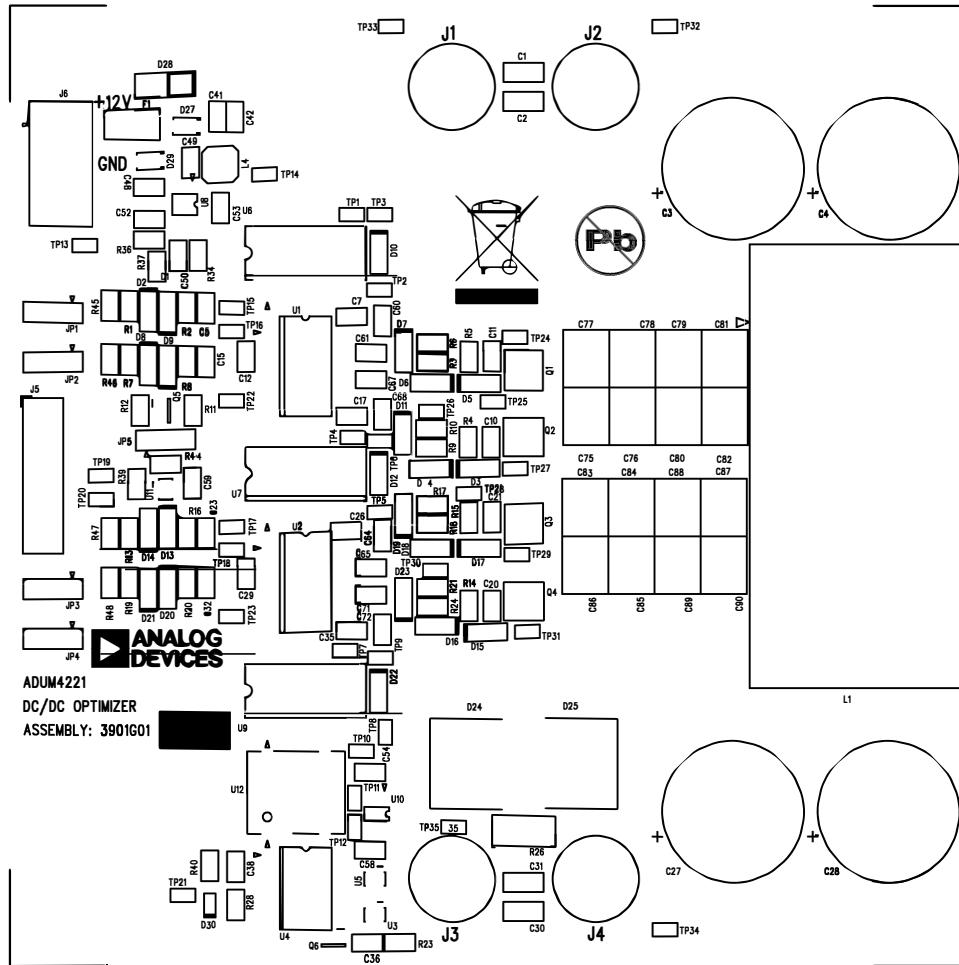
Analog Devices, Inc.
1 Analog Way
Wilmington, MA 01887

AHEAD OF WHAT'S POSSIBLE™

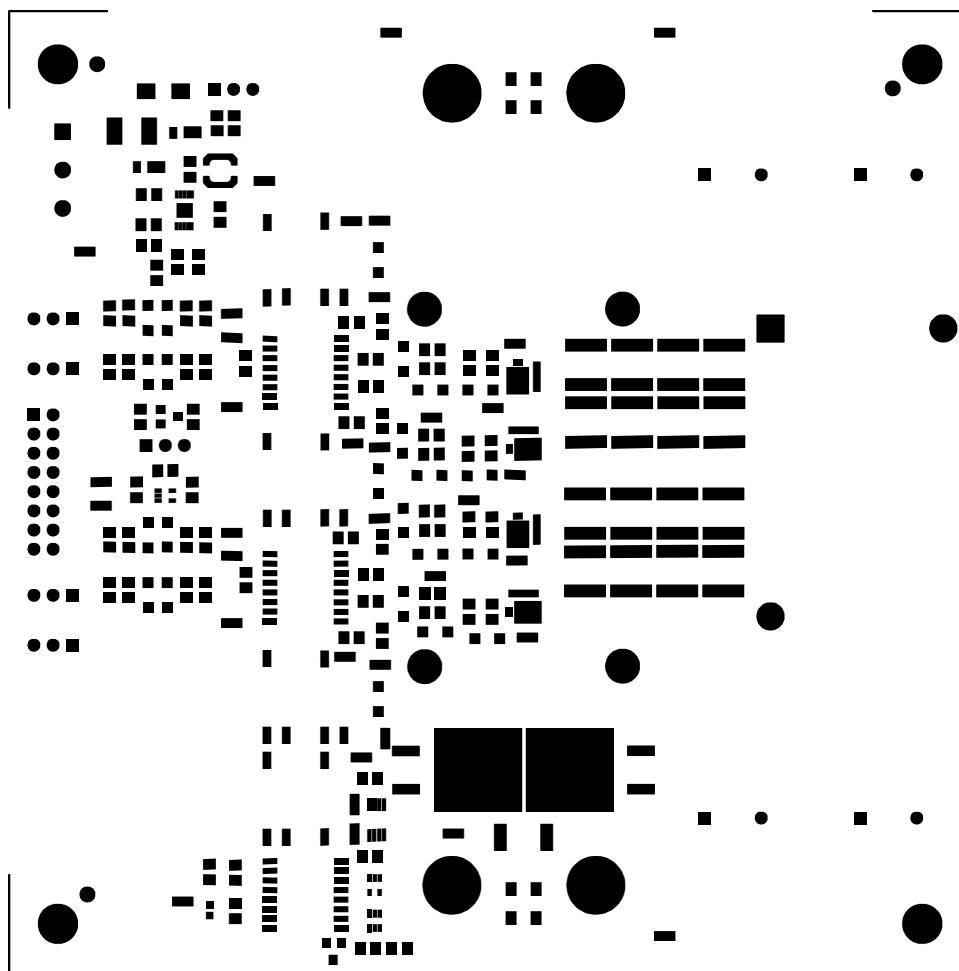
POWER SUPPLIES

SIZE	CAGE CODE	DWG NO	REV
B	1INST2	3902G01	1
Monday, July 30, 2018		SHEET 3 OF 3	

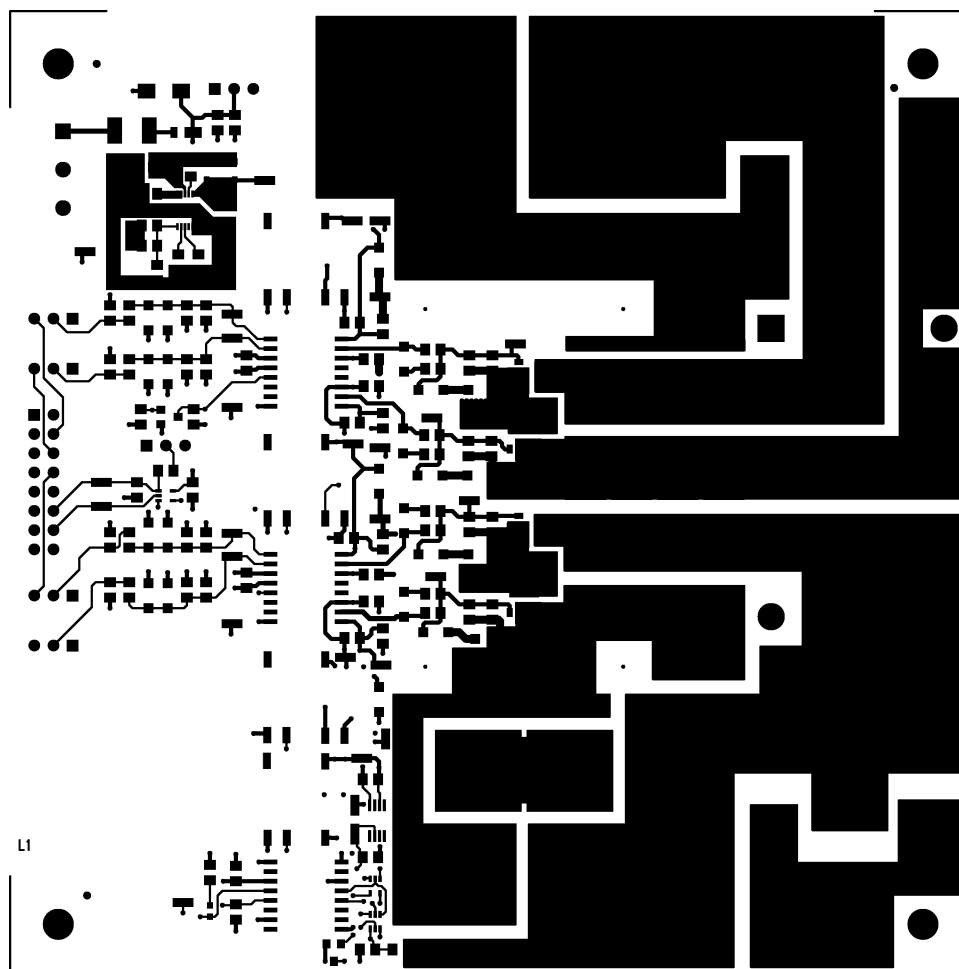
SILKSCREEN PRIMARY SIDE



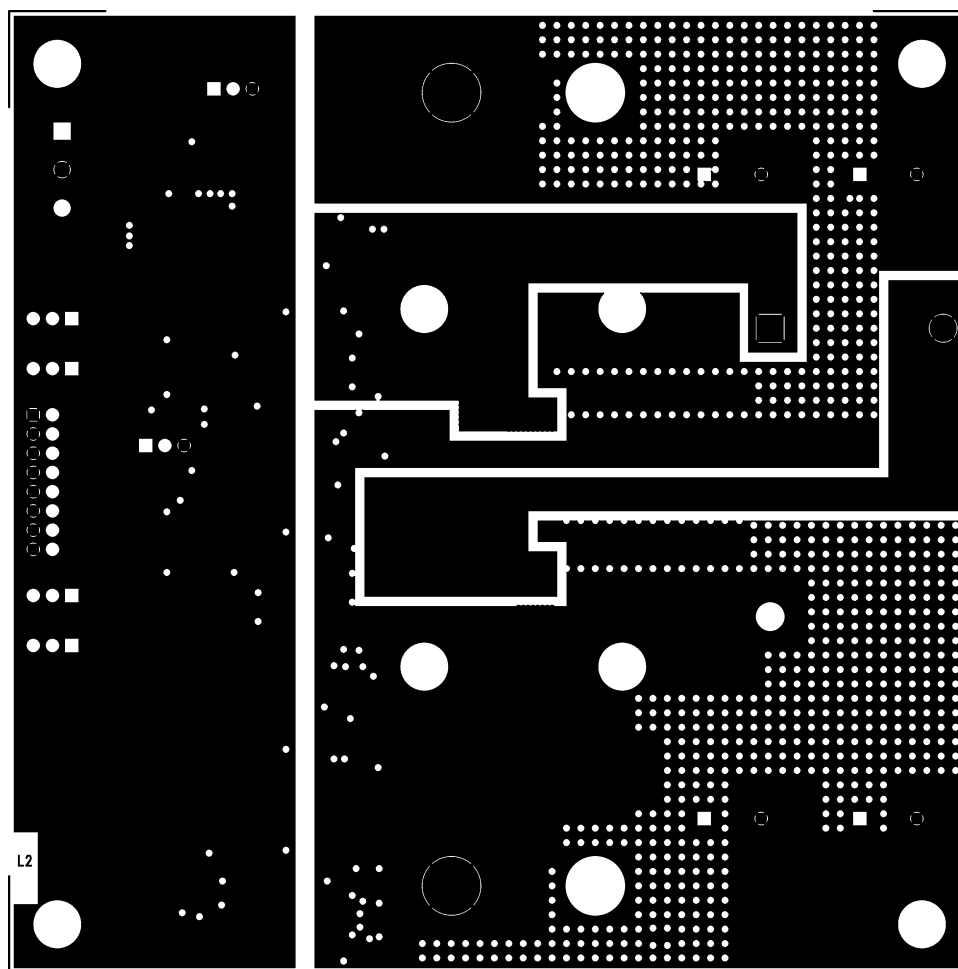
SOLDER MASK PRIMARY SIDE



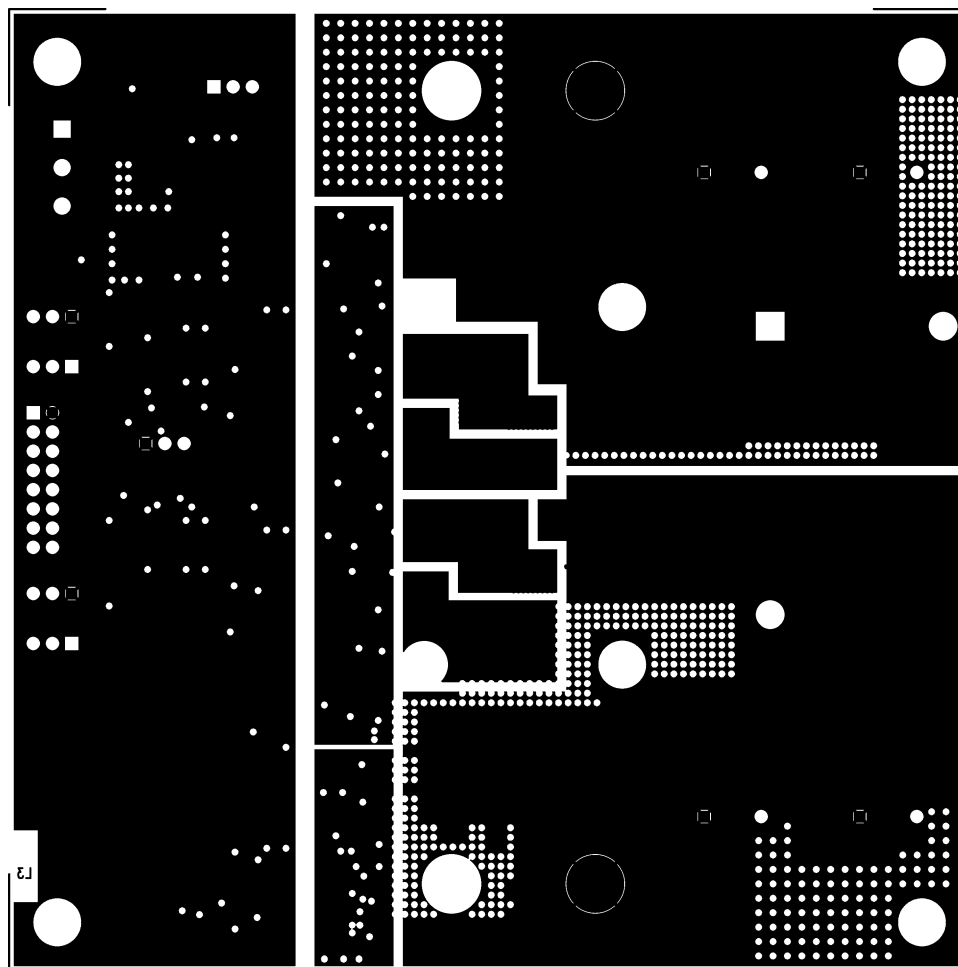
LAYER 1 PRIMARY SIDE



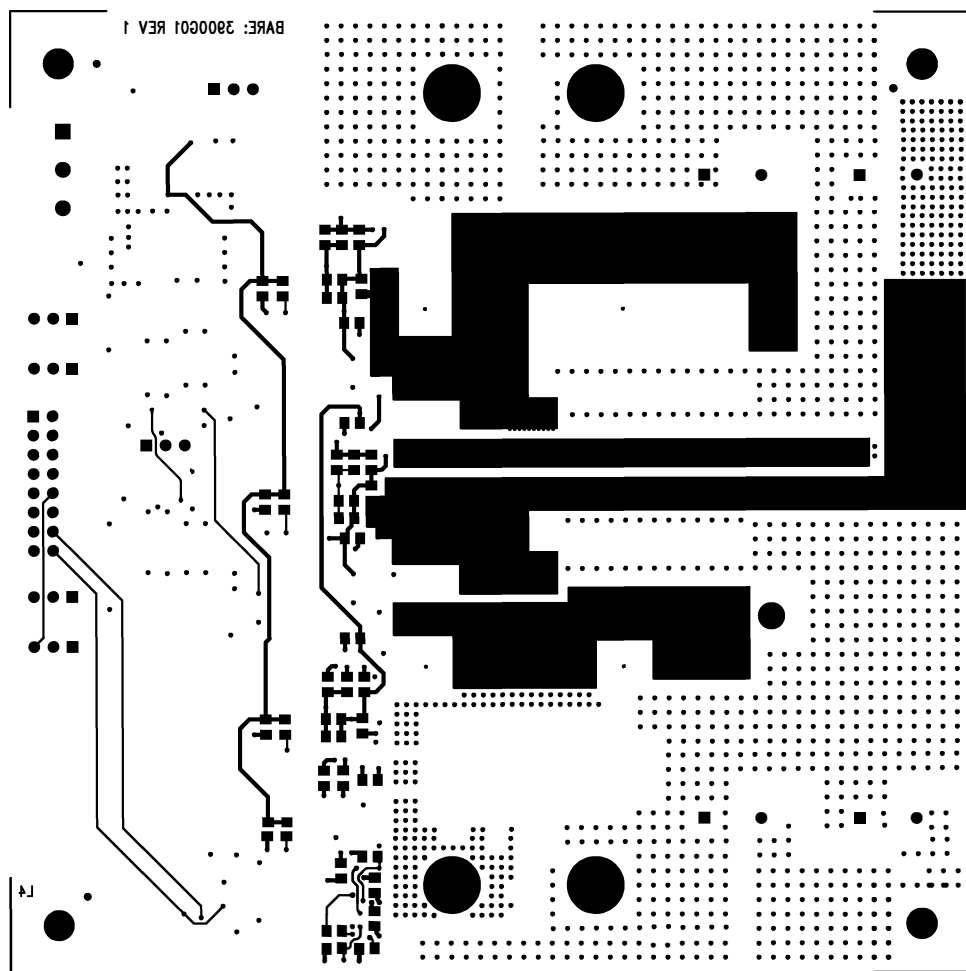
LAYER 2 GROUND PLANE

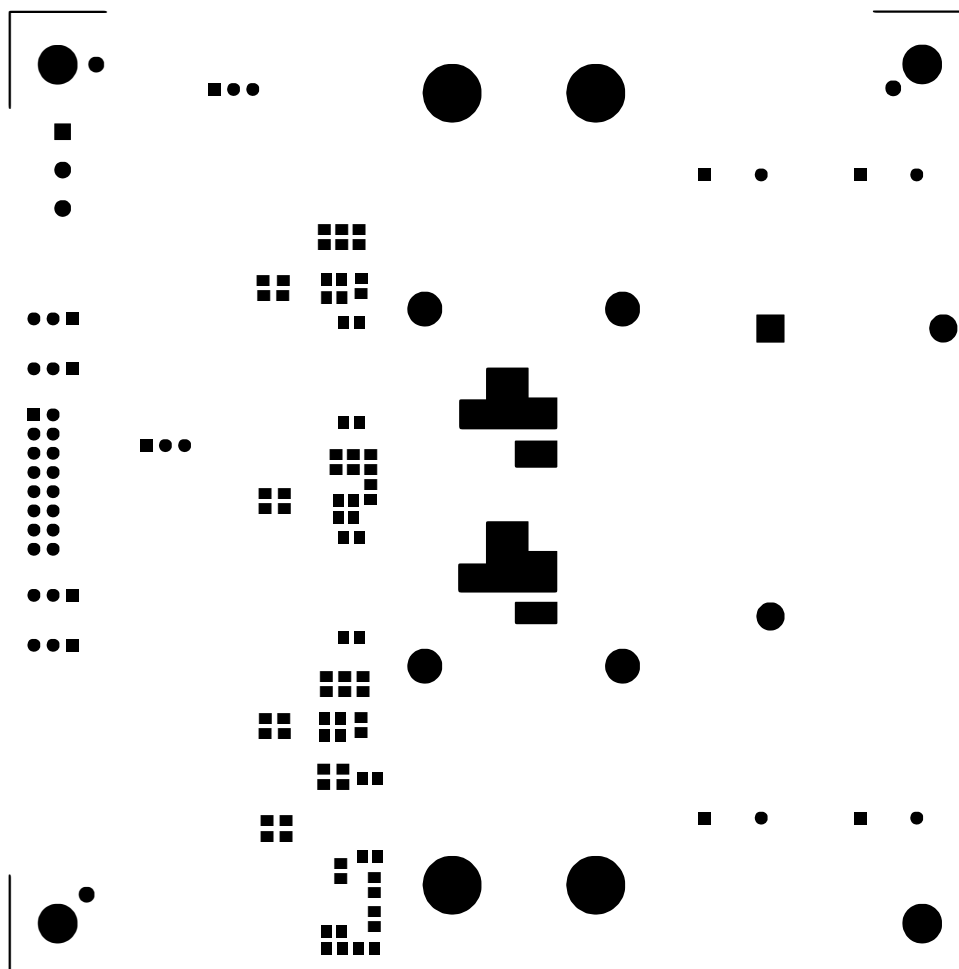


LAYER 3 POWER PLANE

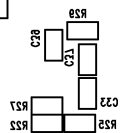
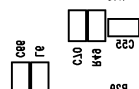
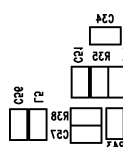
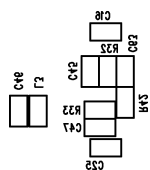
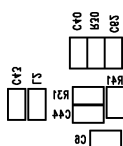
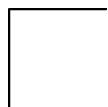


LAYER 4 SECONDARY SIDE





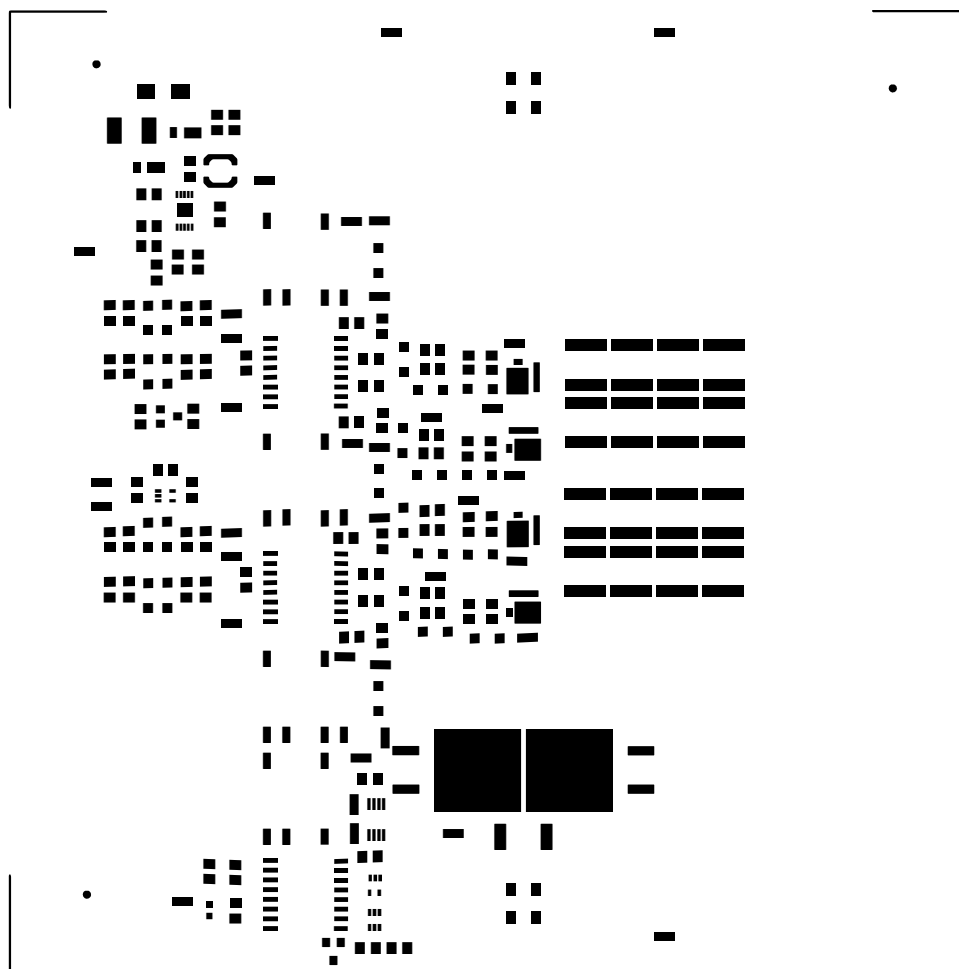
SILKSCREEN SECONDARY SIDE



PASTE MASK PRIMARY SIDE



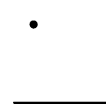
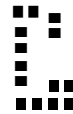
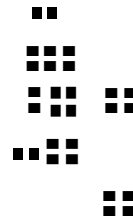
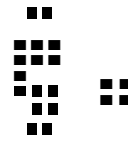
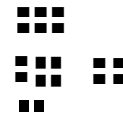
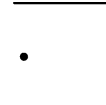
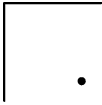
SQUEEGEE SIDE



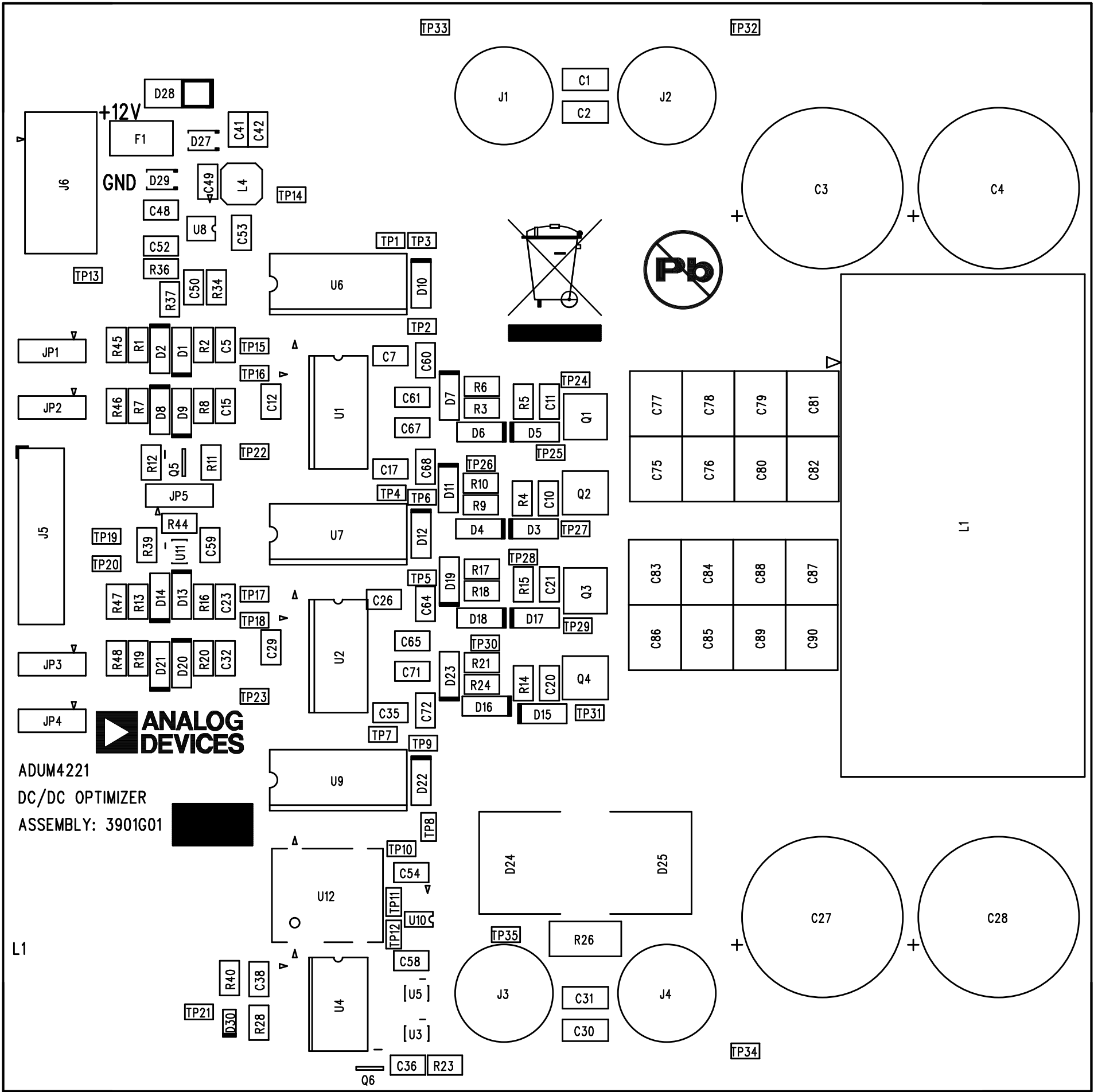
PASTE MASK SECONDARY SIDE



SQUEEGEE SIDE



ASSEMBLY DRAWING PRIMARY SIDE



ASSEMBLY DRAWING SECONDARY SIDE

BARE: 3900G01 REV 1

FAN

