

A

B

C

D

1

1

2

2

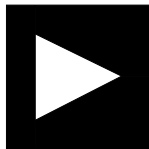
3

3

4

4

# ADSP-BF506F EZ-KIT LITE SCHEMATIC



**ANALOG  
DEVICES**

20 Cotton Road  
Nashua, NH 03063  
PH: 1-800-ANALOGD

**Title** ADSP-BF506F EZ-KIT LITE  
TITLE

<b>Size</b> C	<b>Board No.</b> A0226-2009	<b>Rev</b> 1.0
------------------	--------------------------------	-------------------

<b>Date</b> 17-12-2009_16:20	<b>Sheet</b> 1 of 10
---------------------------------	-------------------------

A

B

C

D

1

2

3

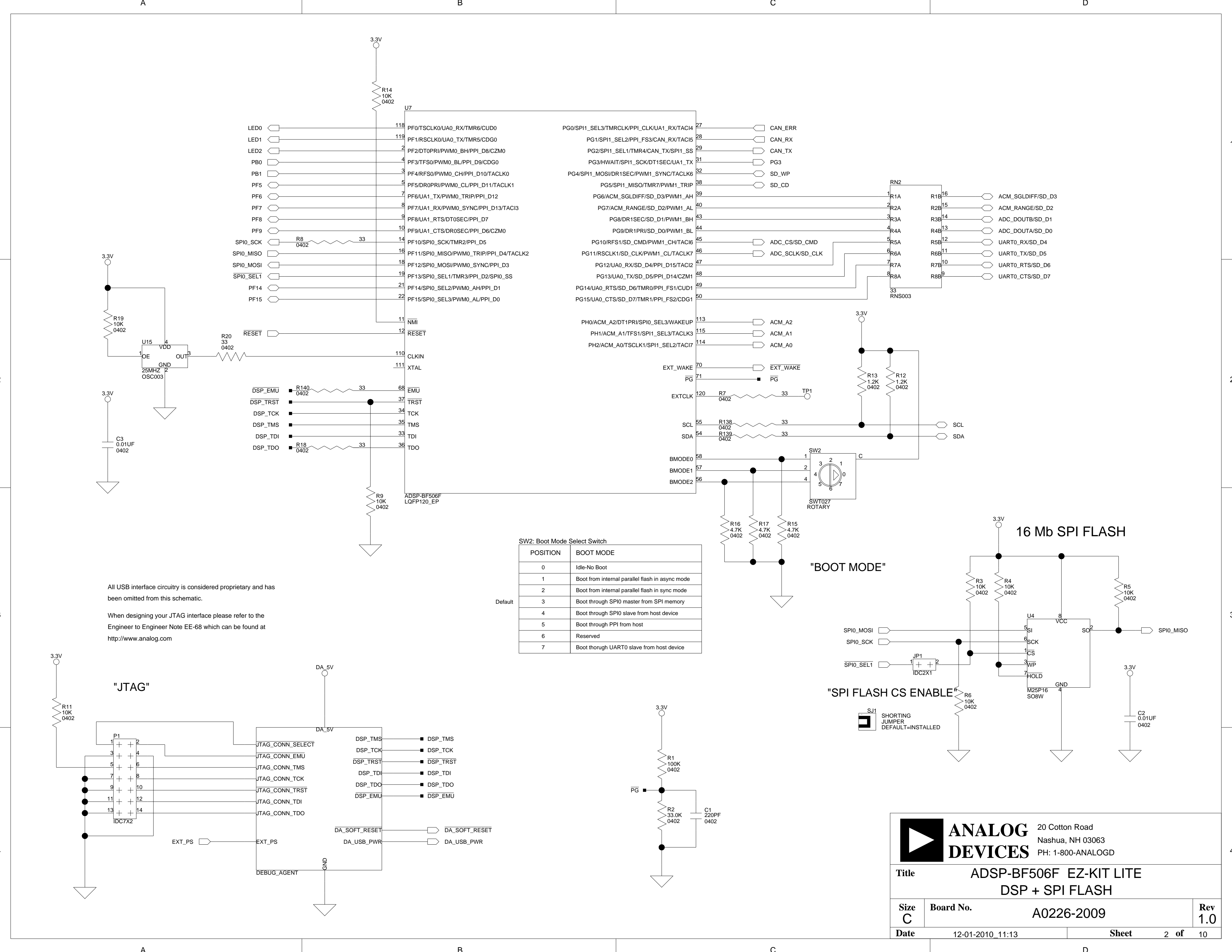
4

1

2

3

4

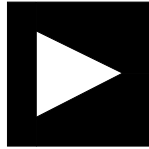


All USB interface circuitry is considered proprietary and has been omitted from this schematic.

When designing your JTAG interface please refer to the Engineer to Engineer Note EE-68 which can be found at <http://www.analog.com>

SW2: Boot Mode Select Switch	
POSITION	BOOT MODE
0	Idle-No Boot
1	Boot from internal parallel flash in async mode
2	Boot from internal parallel flash in sync mode
3	Boot through SPI0 master from SPI memory
4	Boot through SPI0 slave from host device
5	Boot through PPI from host
6	Reserved
7	Boot thorough UART0 slave from host device

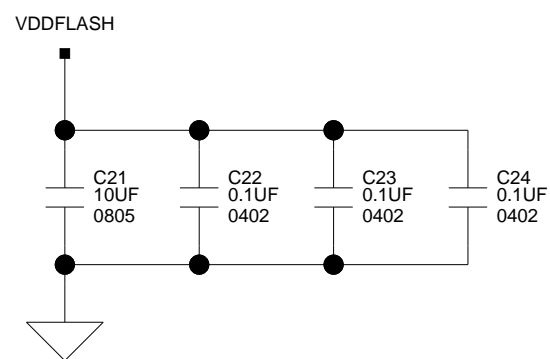
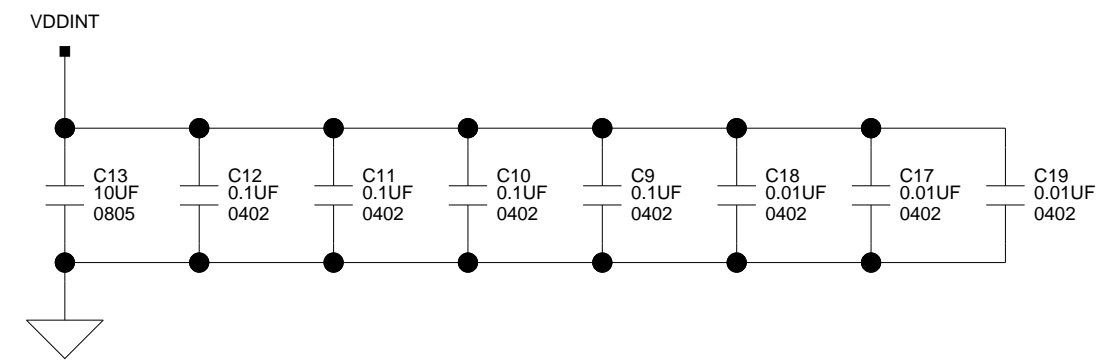
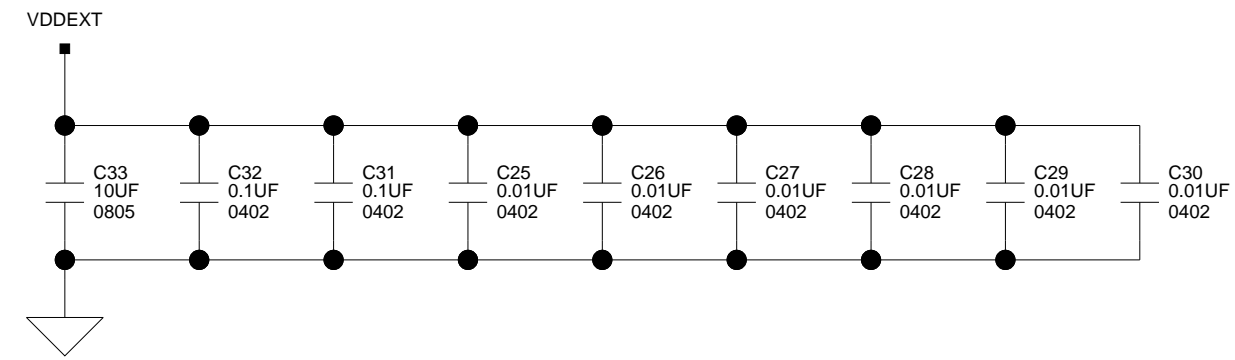
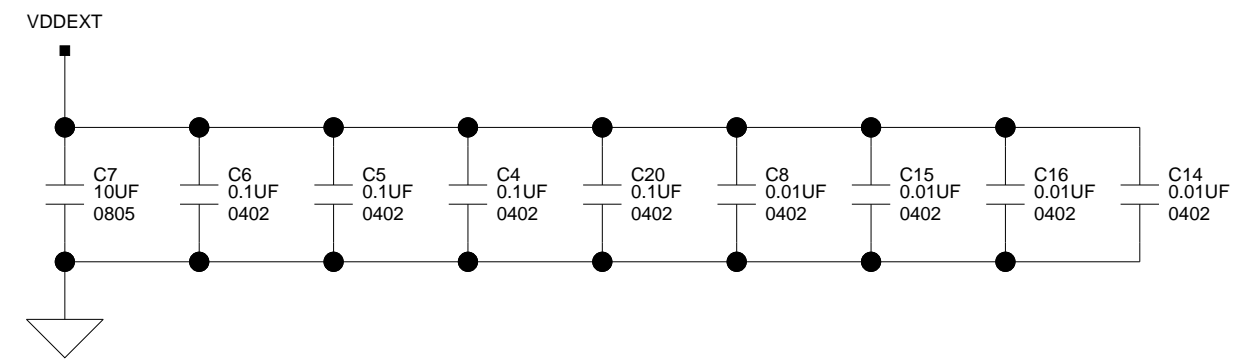
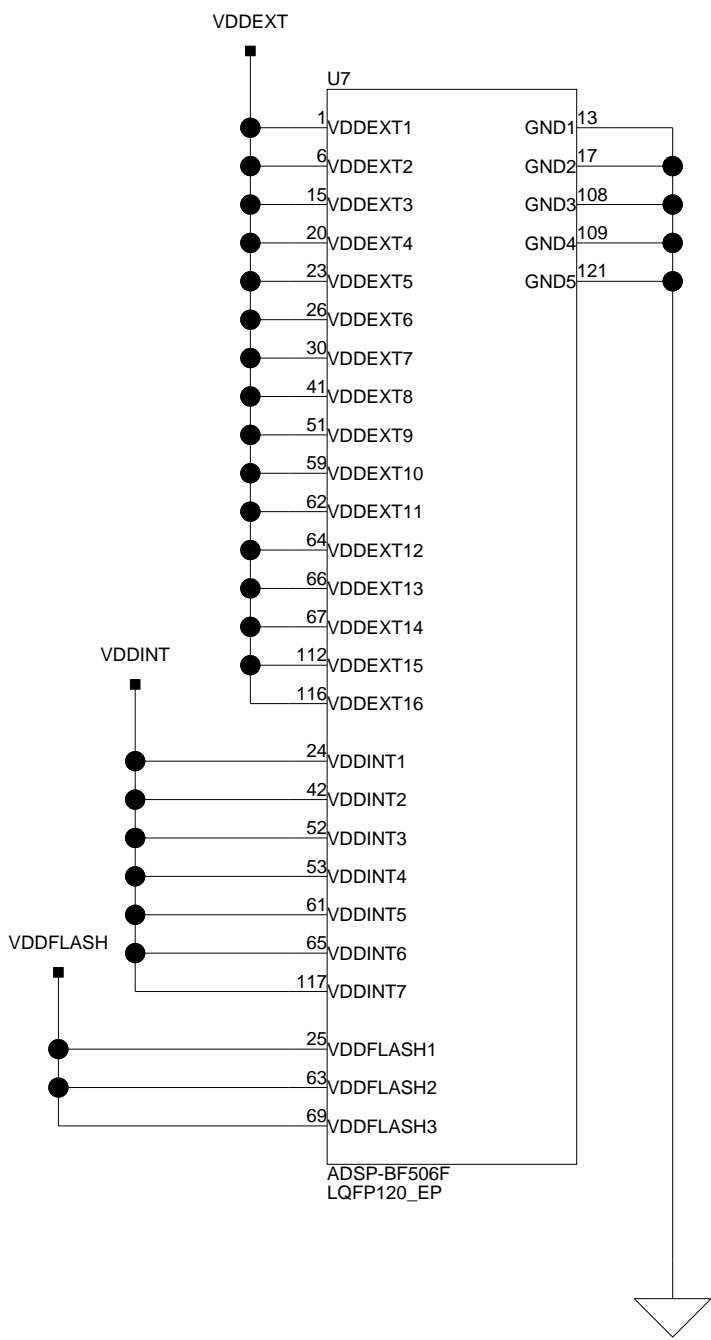
Default



**ANALOG  
DEVICES**

20 Cotton Road  
Nashua, NH 03063  
PH: 1-800-ANALOGD

Title			ADSP-BF506F EZ-KIT LITE DSP + SPI FLASH		
Size	C	Board No.	A0226-2009		Rev
Date	12-01-2010_11:13		Sheet	2 of	10

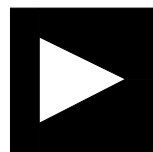
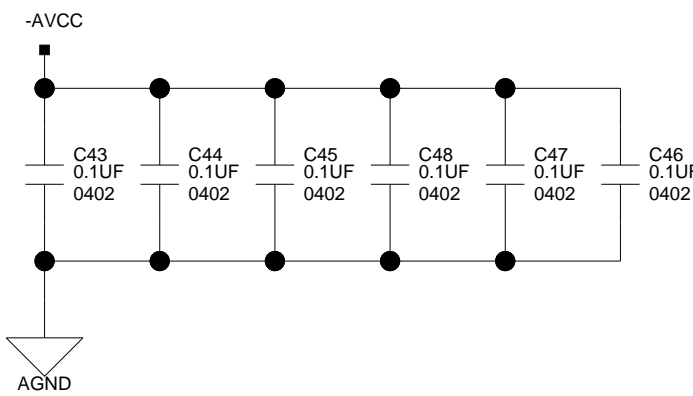
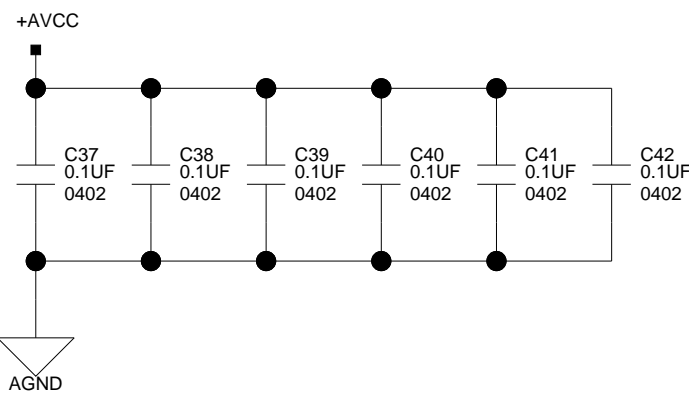
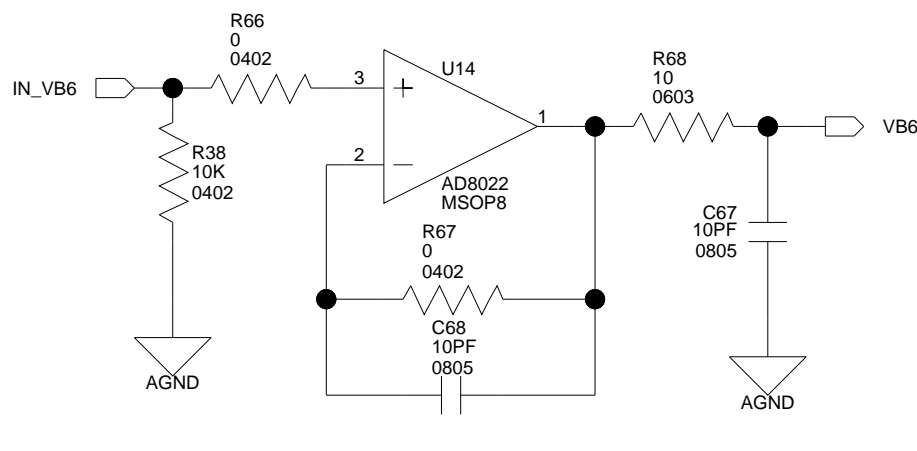
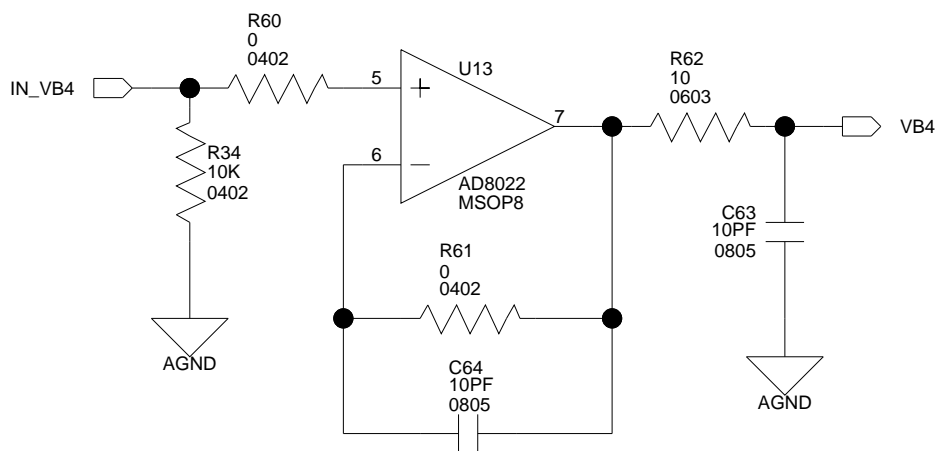
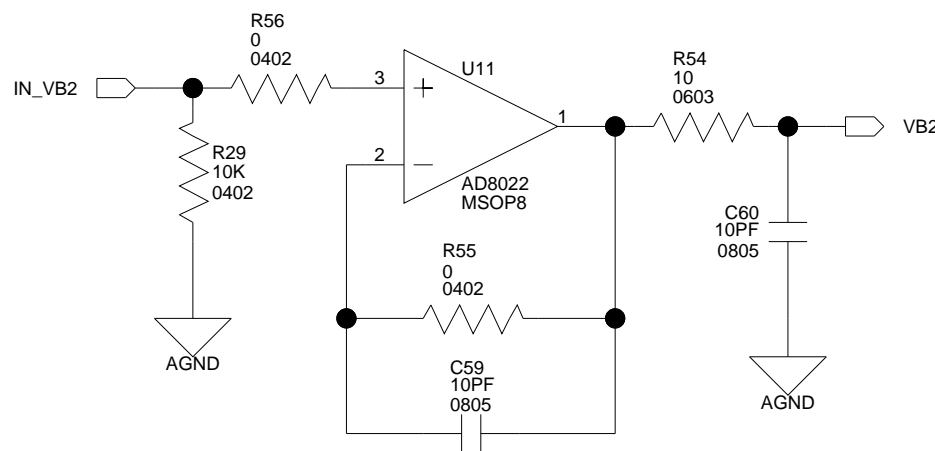
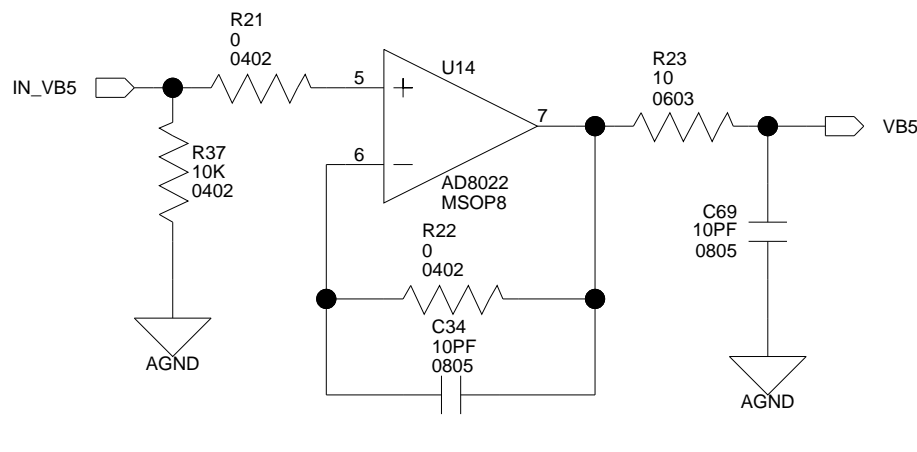
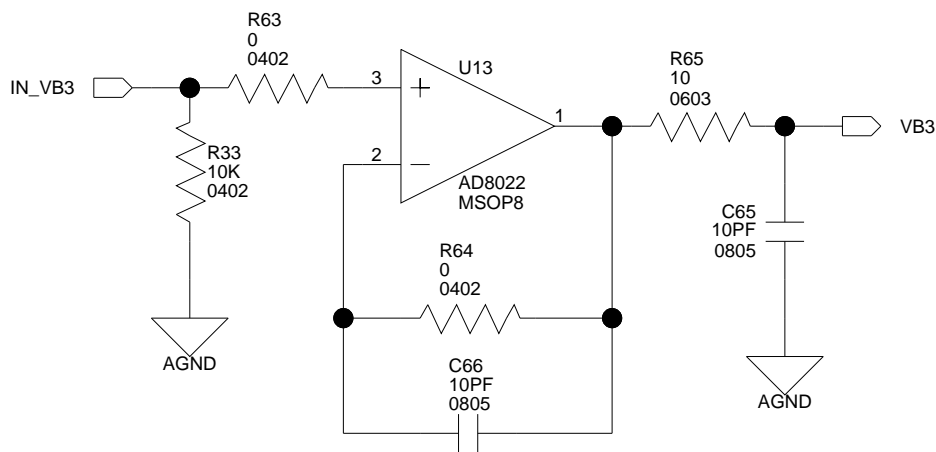
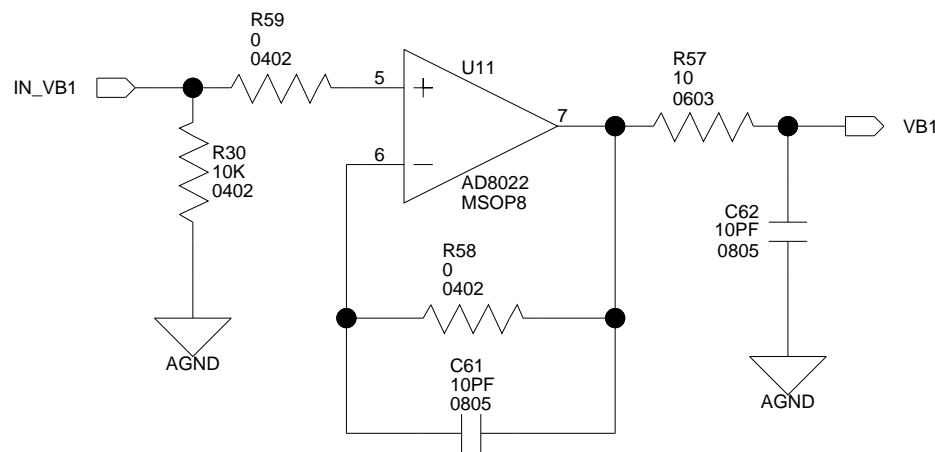
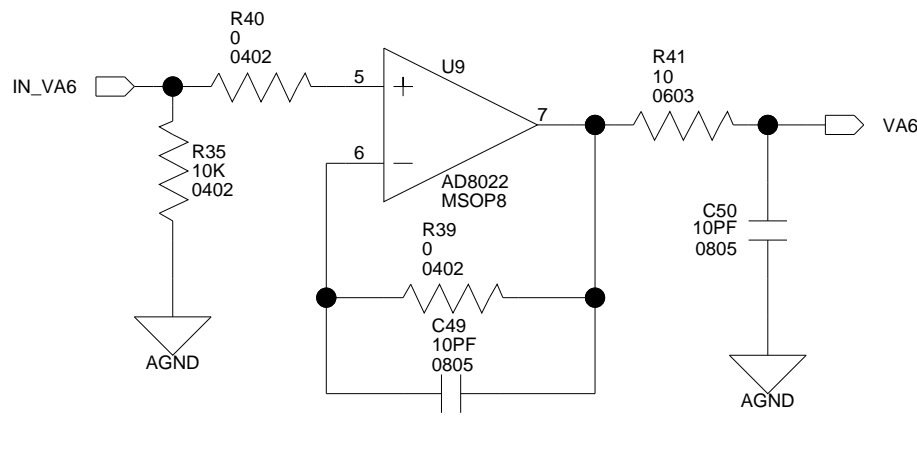
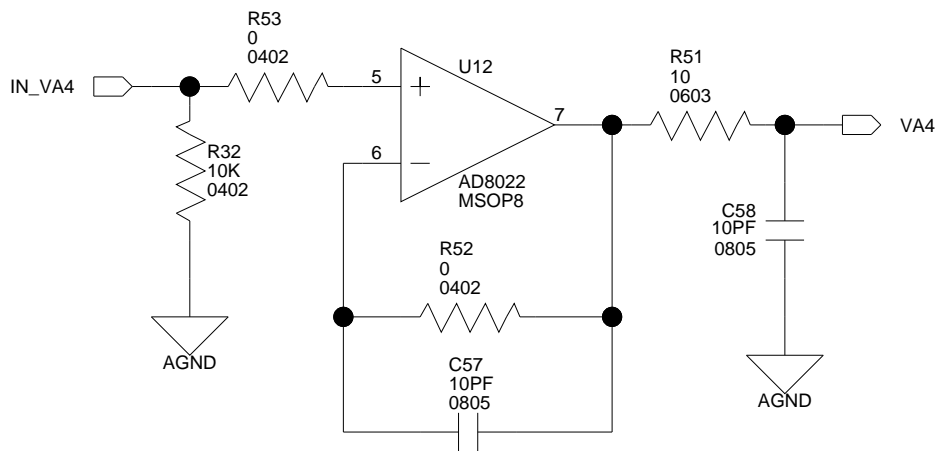
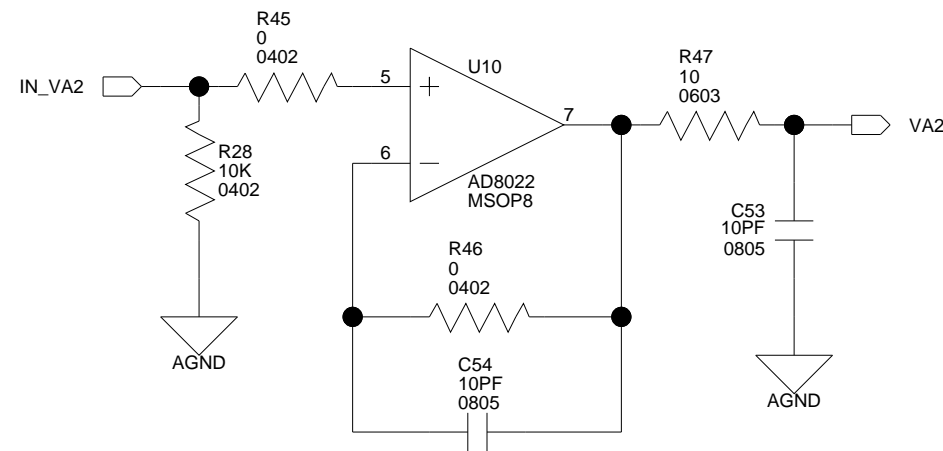
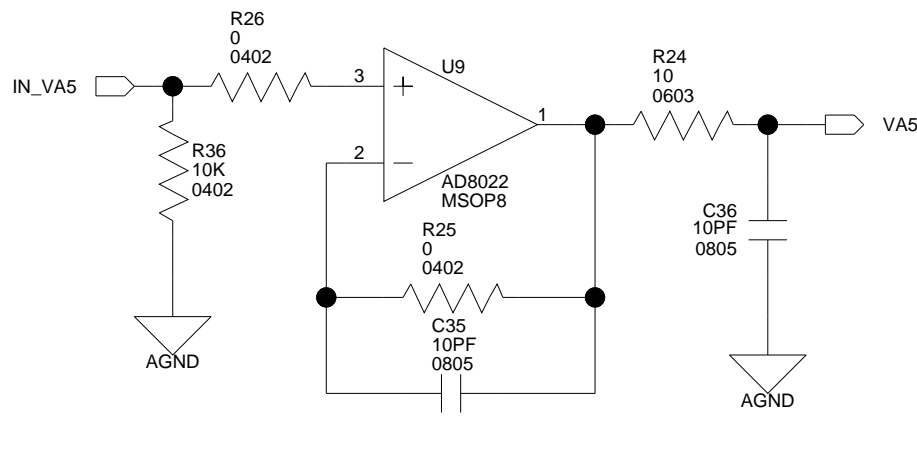
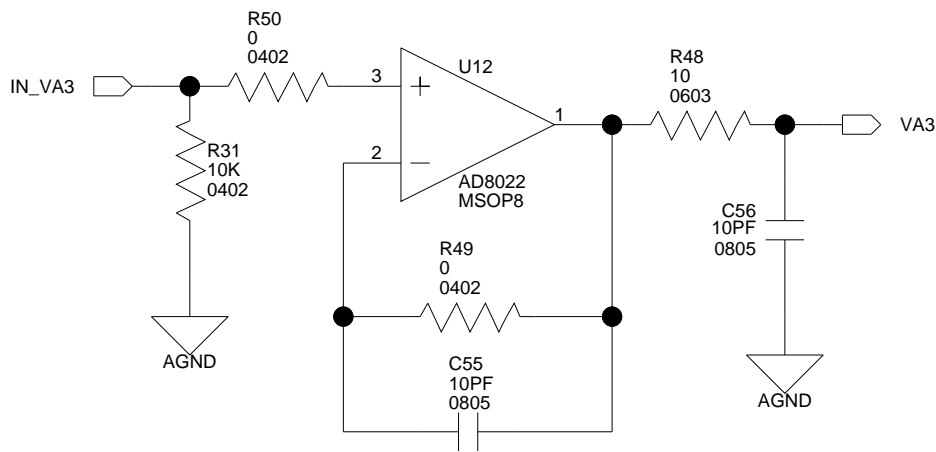
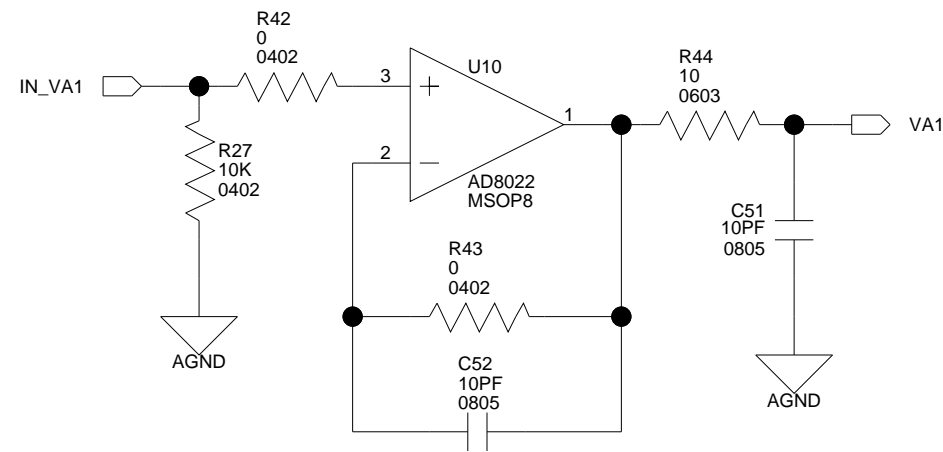


A

B

C

D



**ANALOG  
DEVICES**

20 Cotton Road  
Nashua, NH 03063  
PH: 1-800-ANALOGD

Title **ADSP-BF506F EZ-KIT LITE  
ADC BUFFERS**

Size **C** Board No. **A0226-2009**

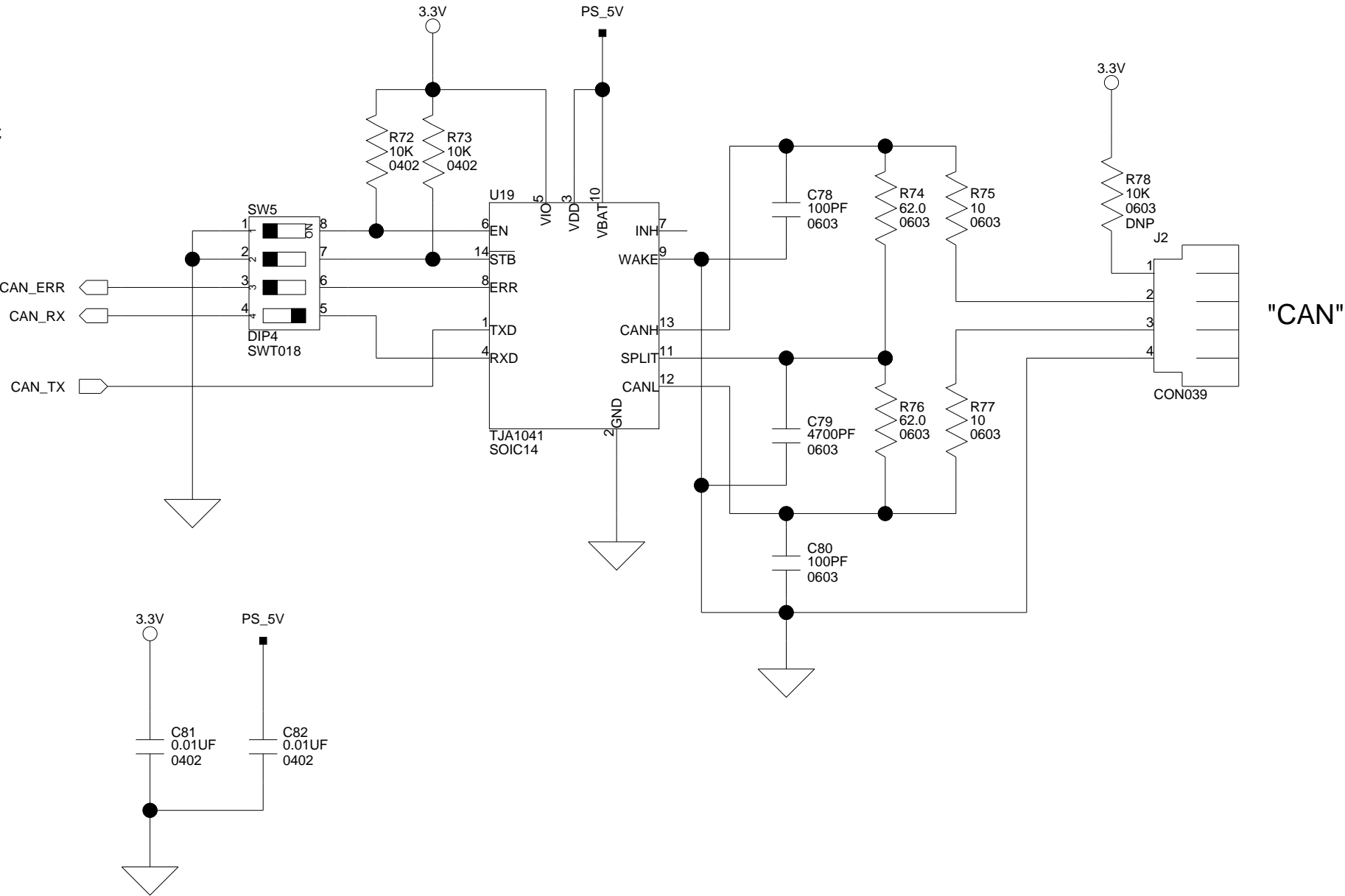
Rev **1.0**

Date 12-01-2010\_11:13

Sheet 4 of 10



SW5 disconnects the DSP from the CAN IC  
"CAN ENABLE"



1

2

3

4

1

2

3

4

1

2

3

4

1

2

3

4

1

2

3

4

1

2

3

4

1

2

3

4

1

2

3

4

1

2

3

4

1

2

3

4

1

2

3

4

1

2

3

4

1

2

3

4

1

2

3

4

1

2

3

4

1

2

3

4

1

2

3

4

1

2

3

4

1

2

3

4

1

2

3

4

1

2

3

4

1

2

3

4

1

2

3

4

1

2

3

4

1

2

3

4

1

2

3

4

1

2

3

4

1

2

3

4

1

2

3

4

1

2

3

4

1

2

3

4

1

2

3

4

1

2

3

4

1

2

3

4

1

2

3

4

1

2

3

4

1

2

3

4

1

2

3

4

1

2

3

4

1

2

3

4

1

2

3

4

1

2

3

4

1

2

3

4

1

2

3

4

1

2

3

4

1

2

3

4

1

2

3

4

1

2

3

4

1

2

3

4

1

2

3

4

1

2

3

4

1

2

3

4

1

2

3

4

1

2

3

4

1

2

3

4

1

2

3

4

1

2

3

4

1

2

3

4

1

2

3

4

1

2

3

4

1

2

3

4

1

2

3

4

1

2

3

4

1

2

3

4

1

2

3

4

1

2

3

4

1

2

3

4

1

2

3

4

1

2

3

4

1

2

3

4

1

2

3

4

1

2

3

4

1

2

3

4

1

2

3

4

1

2

3

4

1

2

3

4

1

2

3

4

1

2

3

4

1

2

3

4

1

2

3

4

1

2

3

4

1

2

3

4

1

2

3

4

1

2

3

4

1

2

3

4

1

2

3

4

1

2

3

4

1

2

3

4

1

2

3

4

1

2

3

4

1

2

3

4

1

2

3

4

1

2

3

4

1

2

3

4

1

2

3

4

1

2

3

4

1

2

3

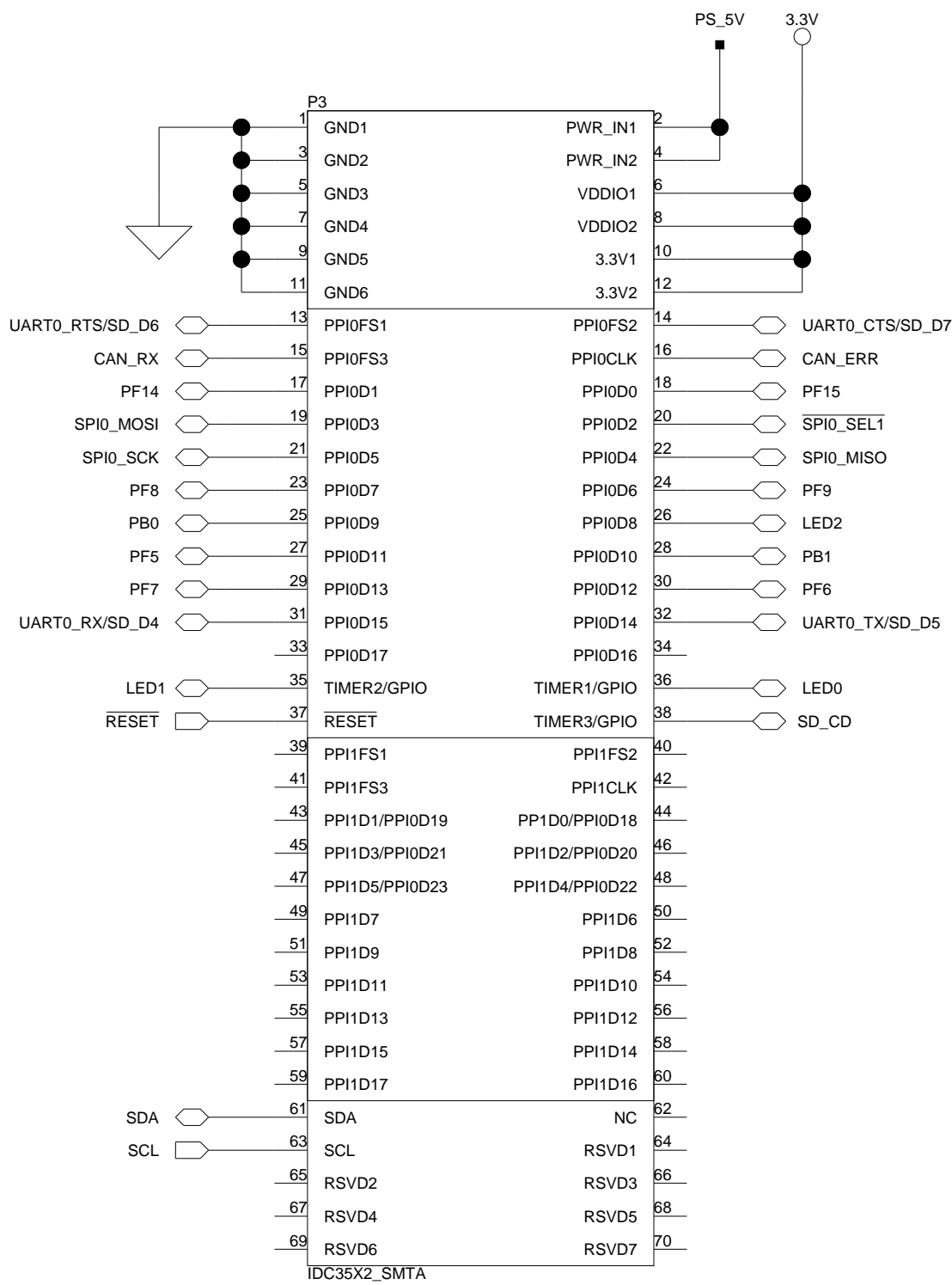
A

B

C

D

1

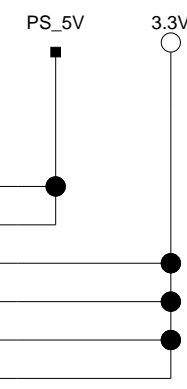


SPORT0

SPI1

UART0

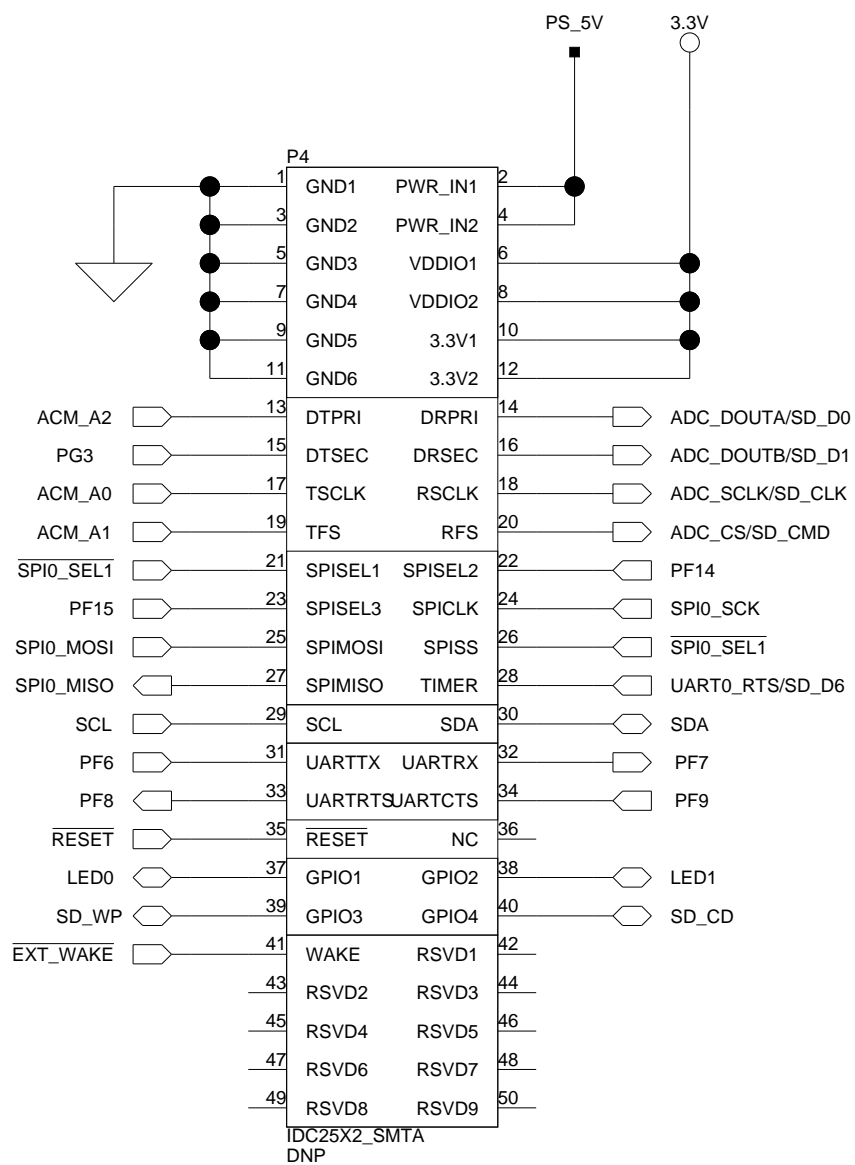
PWM1



SPORT1

SPI0

UART1



1

2

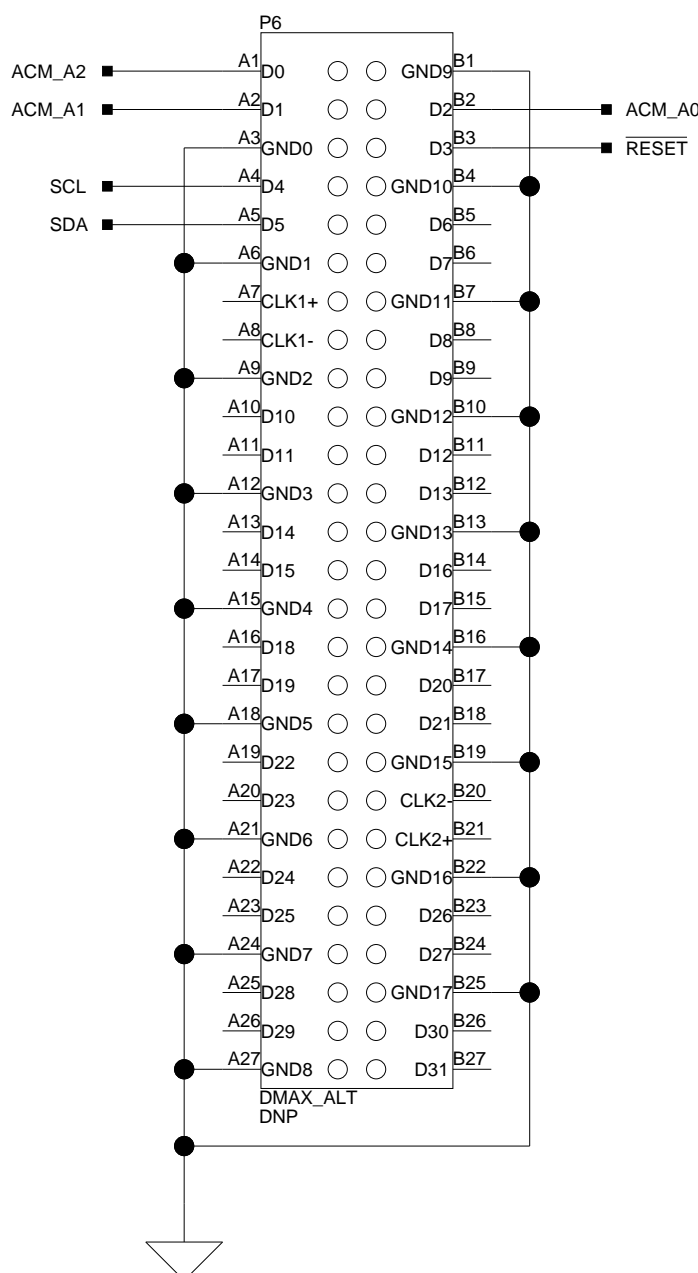
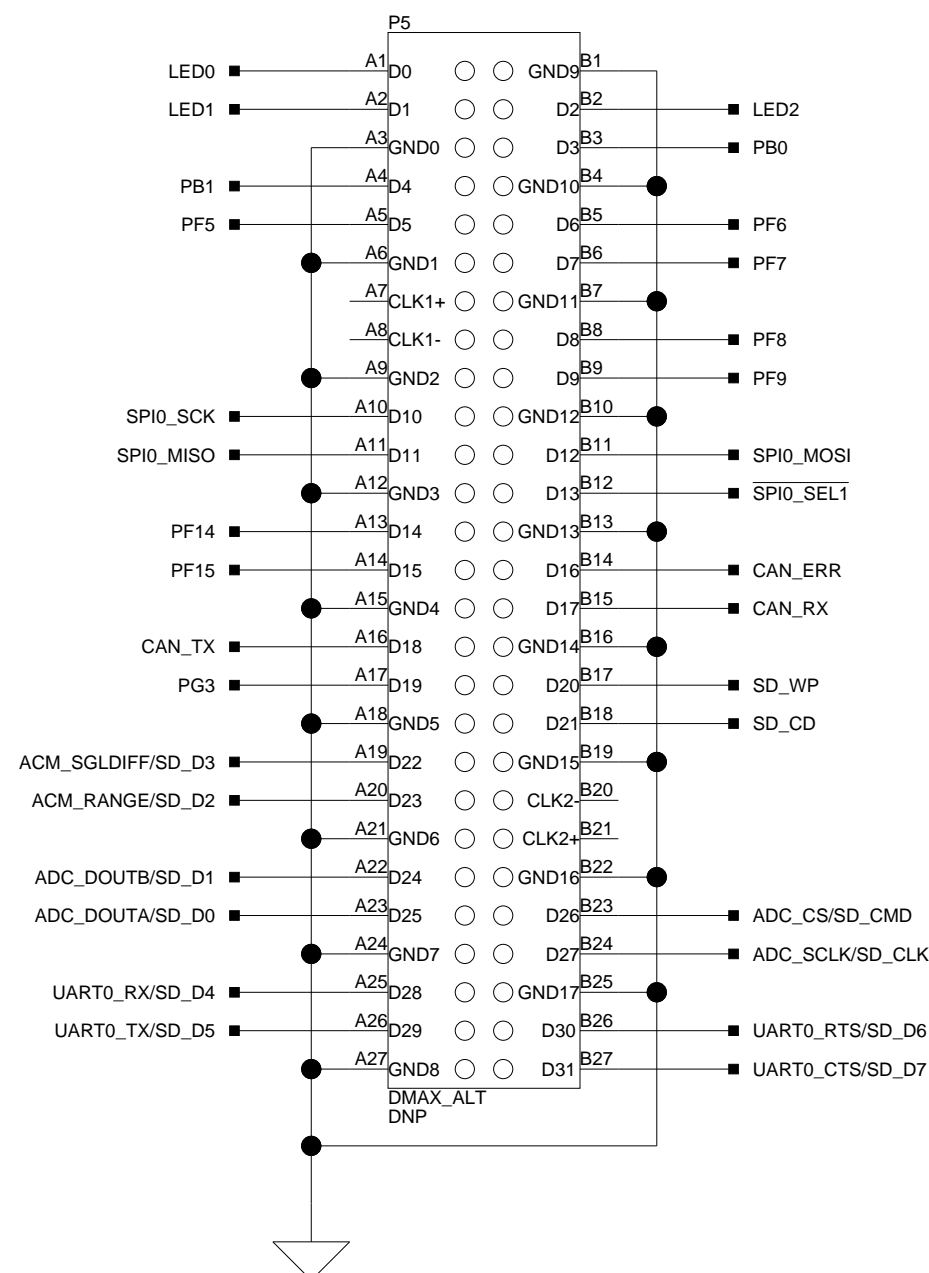
3

4

2

3

4



 <b>ANALOG DEVICES</b> 20 Cotton Road Nashua, NH 03063 PH: 1-800-ANALOGD		
Title ADSP-BF506F EZ-KIT LITE EXPANSION INTERFACE, DMAX		
Size C	Board No. A0226-2009	Rev 1.0
Date 17-12-2009_16:20	Sheet 8 of 10	

A

B

C

D





A

B

C

D

1

2

1

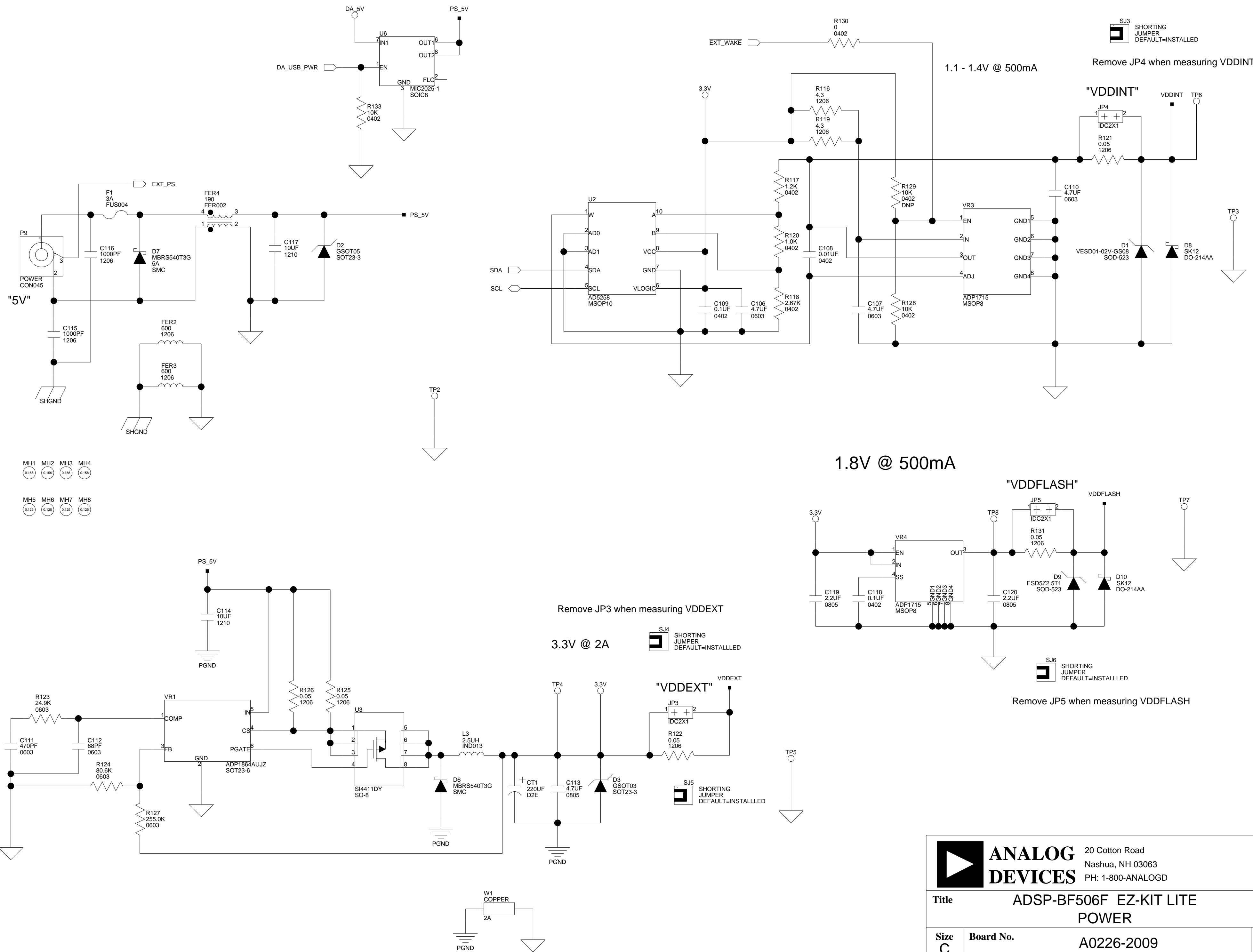
2

3

3

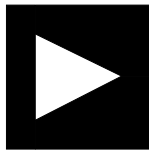
4

4



REVISIONS

REV	ECO #	DESCRIPTION	ENGR	DATE	APPR
0.1		Initial Release	KBG	7/16/08	
1.0		ECO2009-xxx	KBG	11/9/09	



**ANALOG  
DEVICES**

20 Cotton Road  
Nashua, NH 03063  
PH: 1-800-ANALOGD

Approvals		Date
Drawn	KBG	7/16/08
Checked		
Engineering		

Title		ADSP-BF506F EZ-KIT LITE REV BLOCK		
Size C	Board No. A0226-2009			Rev 1.0
Date	17-12-2009_16:20		Sheet	1 of 1