

## LT8636

# 42V, 5A Synchronous Step-Down Silent Switcher with 2.5 $\mu$ A Quiescent Current

## DESCRIPTION

Demonstration circuit 2918A is a 42V, 5A synchronous step-down SILENT SWITCHER with spread spectrum frequency modulation featuring the LT<sup>®</sup>8636. The demo board is designed for 5V output from a 5.8V to 42V input. The wide input range allows a variety of input sources, such as automotive batteries and industrial supplies. The LT8636 is a compact, low emission, high efficiency, and high frequency synchronous monolithic step-down switching regulator. The proprietary silent switcher architecture minimizes electromagnetic emissions with simplified filter and reduced layout sensitivity. Selectable spread spectrum mode further improves EMI performance, making it perfect solution to the noise sensitive applications. The regulator's ultralow 2.5 $\mu$ A quiescent current with the output in full regulation enables applications requiring highest efficiency at very light load currents, such as automotive and battery powered portable instruments.

Peak current mode control with minimum on-time of as small as 30ns allows high step-down conversion even at high frequency. The LT8636 switching frequency can be programmed either via oscillator resistor or external clock over a 200kHz to 3MHz range. The default frequency of demo circuit 2918A is 2MHz.

The SYNC/MODE pin on the demo board 2918A is grounded (JP1 at BURST position) by default for low ripple Burst Mode<sup>®</sup> operation. To synchronize to an external clock, move the Jump JP1 to SYNC/FCM and apply the external clock to the SYNC terminal on the 2918A. In sync mode, the part runs in forced continuous mode. Without external clock applied, the SYNC/MODE pin is floating, and the part runs in forced continuous mode. This mode offers fast transient response and full frequency operation over a wide load range. Alternatively, move the Jump JP1 to the SPREAD-SPECTRUM, and the

SYNC/MODE is tied to INTV<sub>CC</sub>, the part runs in forced continuous mode with spread spectrum function enabled.

Figure 2 shows the efficiency of the circuit at 12V input and 24V input in Burst Mode Operation. To get accurate efficiency measurement, measure the input voltage at the VIN\_SENSE and GND terminals, which are Kelvin connected to the input cap C2 through signal traces.

Figure 3 shows the LT8636 temperature rising on DC2918A demo board under different load conditions. The LT8636 is assembled in a 4mmx3mm LQFN package with exposed pads for low thermal resistance. The rated maximum load current is 5A, while derating is necessary for certain input voltage and thermal conditions.

The demo board has an EMI filter installed. The EMI performance of the board is shown on Figure 4. The red line in Radiated EMI Performance is CISPR25 Class 5 peak limit. The figure shows that the circuit passes the test with a wide margin. To achieve EMI/EMC performance as shown in Figure 4, the input EMI filter is required and the input voltage should be applied at VEMI terminal, and the setup can be referred to the CISPR25 standards.

The LT8636 datasheet gives a complete description of the part, operation and application information. The datasheet must be read in conjunction with this demo manual for demo circuit 2918A. The layout recommendations for low EMI operation and best thermal performance are available in the datasheet section Low EMI PCB Layout and Thermal Considerations and Peak Output Current. Contact ADI applications engineer for support.

**[Design files for this circuit board are available.](#)**

All registered trademarks and trademarks are the property of their respective owners.

## PERFORMANCE SUMMARY Specifications are at T<sub>A</sub> = 25°C

SYMBOL	PARAMETER	CONDITIONS	MIN	TYP	MAX	UNITS
V <sub>IN_EMI</sub>	Input Supply Range with EMI Filter		5.8		42	V
V <sub>OUT</sub>	Output Voltage		4.85	5	5.15	V
I <sub>OUT</sub>	Maximum Output Current	Derating is Necessary for Certain V <sub>IN</sub> and Thermal Conditions	5			A
f <sub>SW</sub>	Switching Frequency		1.85	2	2.15	MHz
EFF	Efficiency	V <sub>IN</sub> = 12V, I <sub>OUT</sub> = 3A		93.6		%

Rev. 0

## QUICK START PROCEDURE

Demonstration circuit 2918A is easy to set up to evaluate the performance of the LT8636. Refer to Figure 1 for proper measurement equipment setup and follow the procedure below:

NOTE. When measuring the input or output voltage ripple, care must be taken to avoid a long ground lead on the oscilloscope probe. Measure the output voltage ripple by touching the probe tip directly across the output capacitor. See Figure 5 for the proper scope technique.

1. Make sure the Jump JP1 is on the BURST position. Refer to the schematic.
2. With power off, connect the DC power supply to  $V_{EMI}$  and GND. Connect the load from  $V_{OUT}$  to GND.
3. Connect the voltage meter across the  $V_{IN\_SENSE}$  and GND for  $V_{IN}$  measurement, and  $V_{OUT\_SENSE}$  and GND for  $V_{OUT}$  measurement.
4. Turn on the power at the input.

NOTE. Make sure that the input voltage does not exceed 42V.

5. Check for the proper output voltage ( $V_{OUT} = 5V$ ).

NOTE. If there is no output, temporarily disconnect the load to make sure that the load is not set too high or is shorted.

6. Once the proper output voltage is established, adjust the load within the operating ranges and observe the output voltage regulation, ripple voltage, efficiency and other parameters. For efficiency measurement, use the  $V_{IN\_SENSE}$ , GND, and  $V_{OUT\_SENSE}$ , GND accordingly.
7. An external clock can be added to the SYNC terminal when SYNC function is used (JP1 on the SYNC position). When JP1 is in SYNC, and no external clock is connected to the SYNC terminal of the board, the SYNC/FCM pin is floating, and the LT8636 runs in forced continuous mode. JP1 can also set LT8636 in spread spectrum mode (JP1 on the SPREAD-SPECTRUM position).

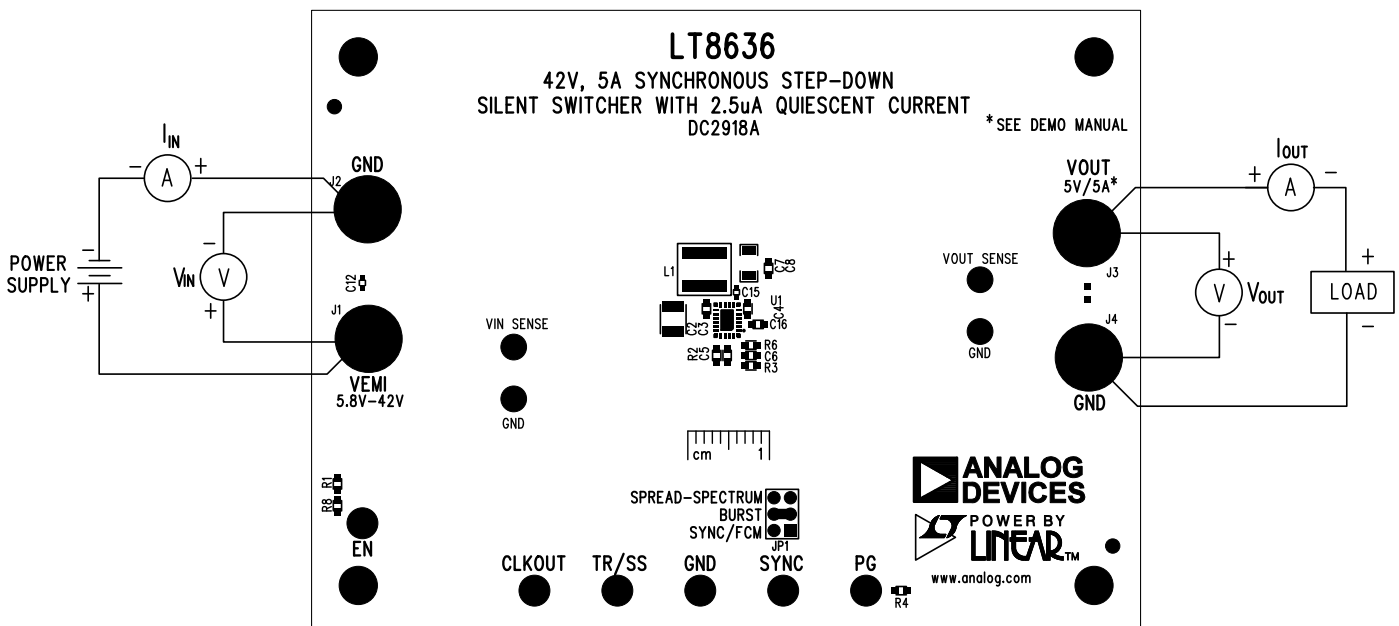


Figure 1. Proper Measurement Equipment Setup

## QUICK START PROCEDURE

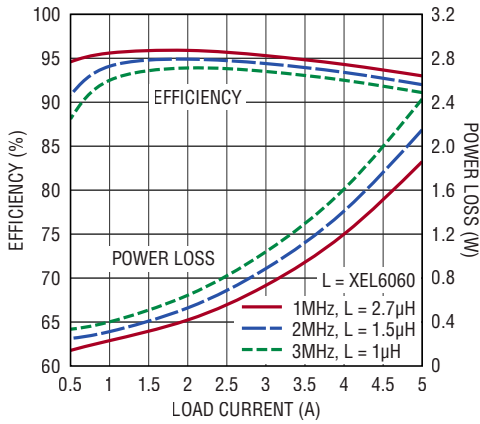


Figure 2. Efficiency vs Load Current

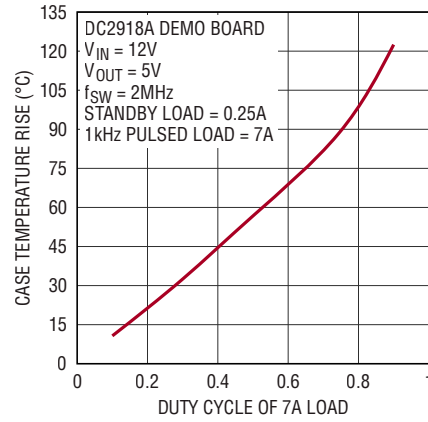
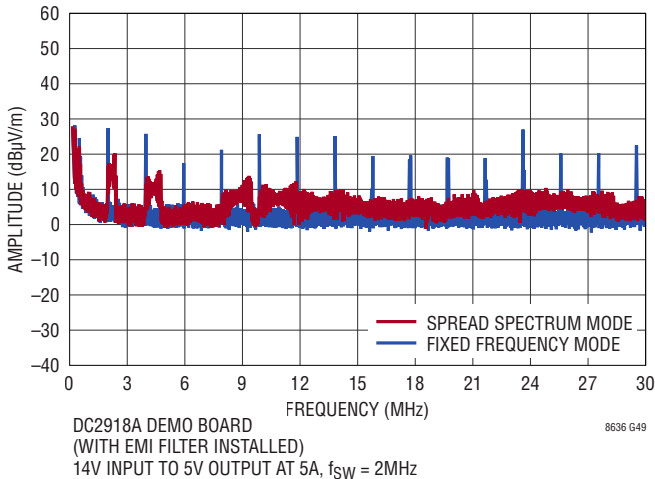


Figure 3. Temperature Rising vs Input Voltage

### Conducted EMI Performance



### Radiated EMI Performance (CISPR25 Radiated Emission Test with Class 5 Peak Limits)

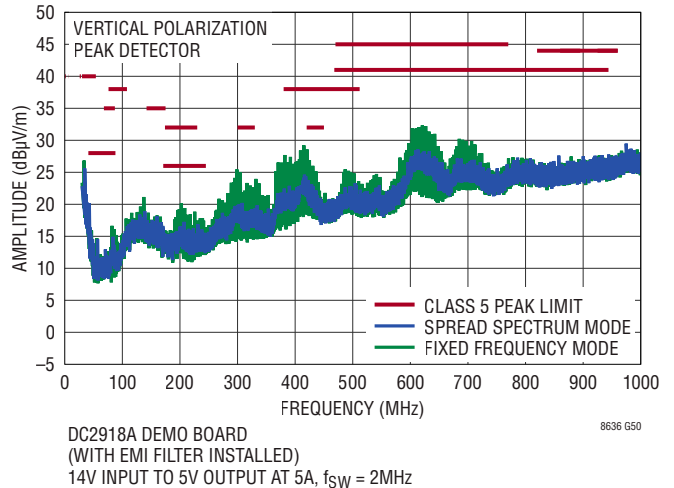


Figure 4. Demo Circuit DC2918A EMI Performance (14V input from  $V_{EMI}$ , with EMI filter,  $I_{OUT} = 5\text{A}$ )

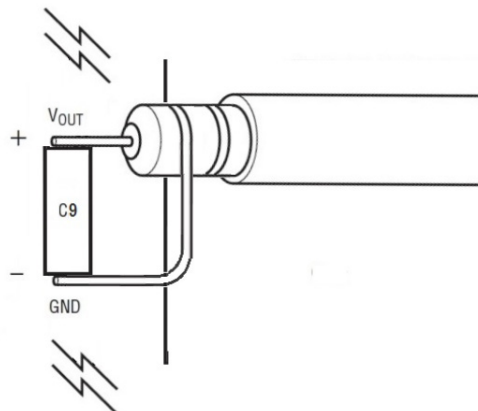


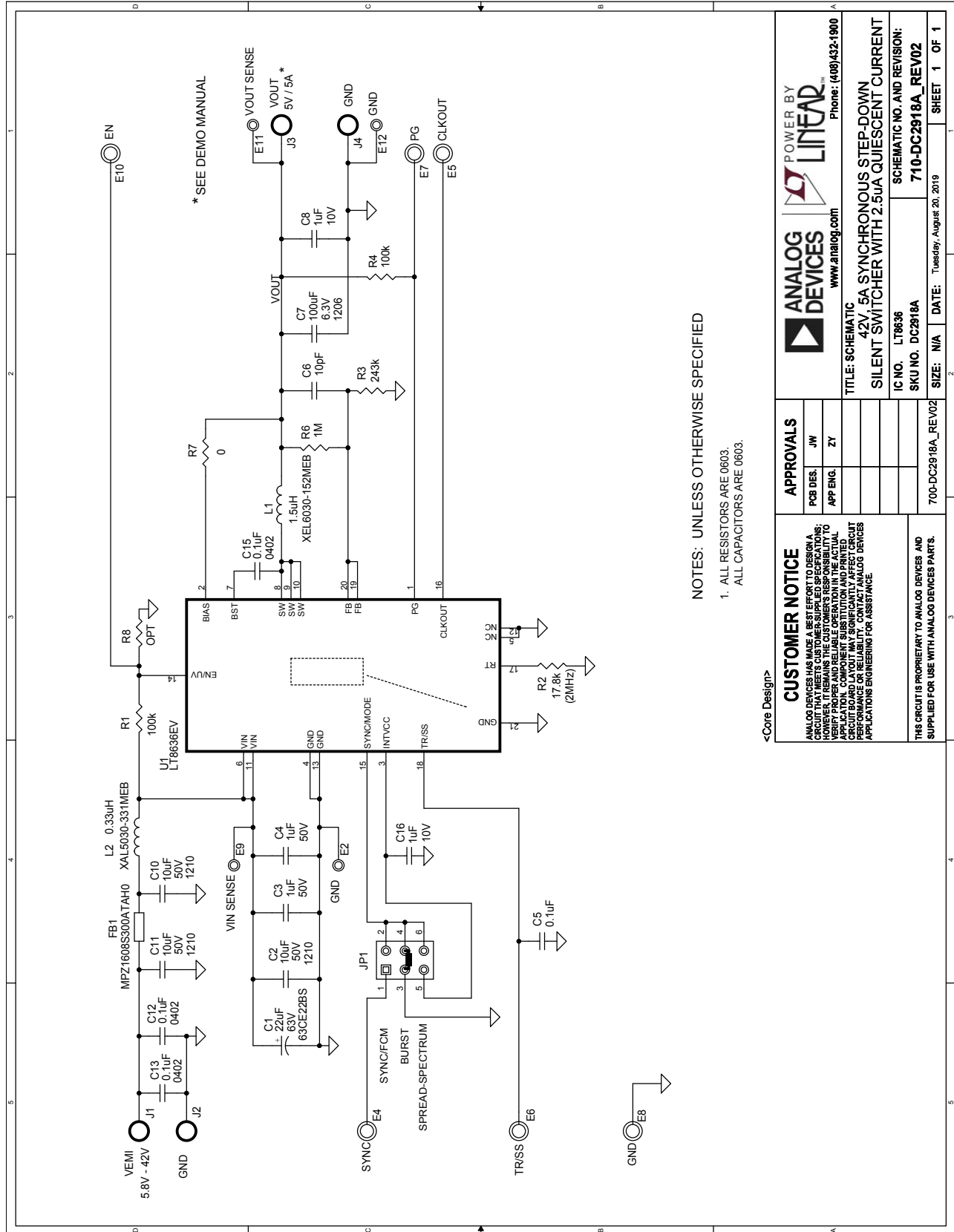
Figure 5. Measuring Output Ripple at Output Capacitor C8

# DEMO MANUAL DC2918A

## PARTS LIST

ITEM	QTY	REFERENCE	PART DESCRIPTION	MANUFACTURER/PART NUMBER
<b>Required Circuit Components</b>				
1	1	C1	CAP, 22uF, ALUM. ELECT, 63V, 20%, 6.3x7.7mm, CE-BS	SUN ELECTRONIC INDUSTRIES CORP, 63CE22BS
2	3	C2, C10, C11	CAP, 10uF, X7R, 50V, 10%, 1210, NO SUBS. ALLOWED	MURATA, GRM32ER71H106KA12L
3	2	C3, C4	CAP, 1uF, X5R, 50V, 10%, 0603	AVX, 06035D105KAT2A
4	1	C5	CAP, 0.1uF, X7R, 16V, 10%, 0603	WURTH ELEKTRONIK, 885012206046
5	1	C6	CAP, 10pF, X7R, 50V, 10%, 0603	AVX, 06035C100KAT2A
6	1	C7	CAP, 100uF, X5R, 6.3V, 10%, 1206	MURATA, GRM31CR60J107KE39L
7	2	C8, C16	CAP, 1uF, X7R, 10V, 10%, 0603	AVX, 0603ZC105KAT2A
8	3	C12, C13, C15	CAP, 0.1uF, X7R, 50V, 10%, 0402	AVX, 04025C104KAT2A
9	1	FB1	IND., 30 OHMS@100MHz, FERRITE BEAD, 25%, 5A, 10mOHMS, 0603	TDK, MPZ1608S300ATAH0
10	1	L1	IND., 1.5uH, PWR, SHIELDED, 20%, 14A, 10.52mOHMS, 6.56mmX6.36mm, XEL6030 Series, AEC-Q200	COILCRAFT, XEL6030-152MEB
11	1	L2	IND., 0.33uH, POWER, 20%, 19.2A, 3.52mOhms	COILCRAFT, XAL5030-331MEB
12	2	R1, R4	RES., 100k OHMS, 1%, 1/10W, 0603, AEC-Q200	VISHAY, CRCW0603100KFKEA
13	1	R2	RES., 17.8k OHMS, 1%, 1/10W, 0603, AEC-Q200	NIC, NRC06F1782TRF
14	1	R3	RES., 243k OHMS, 1%, 1/10W, 0603	VISHAY, CRCW0603243KFKEA
15	1	R6	RES., 1M OHM, 1%, 1/10W, 0603, AEC-Q200	VISHAY, CRCW06031M00FKEA
16	1	R7	RES., 0 OHM, 1/10W, 0603, AEC-Q200	VISHAY, CRCW06030000Z0EA
17	1	U1	IC, Syn. Step-Down Silent Switcher, LQFN-20, 42V, 6A	ANALOG DEVICES, LT8636EV#PBF
<b>Additional Demo Board Circuit Components</b>				
1	0	R8	RES., OPTION, 0603	
<b>Hardware: For Demo Board Only</b>				
1	4	E2, E9, E11, E12	TEST POINT, TURRET, 0.064" MTG. HOLE, PCB 0.062" THK	MILL-MAX, 2308-2-00-80-00-00-07-0
2	6	E4-E8, E10	TEST POINT, TURRET, 0.094" MTG. HOLE, PCB 0.062" THK	MILL-MAX, 2501-2-00-80-00-00-07-0
3	4	J1-J4	CONN., BANANA JACK, FEMALE, THT, NON-INSULATED, SWAGE, 0.218"	KEYSTONE, 575-4
4	1	JP1	CONN., HDR., MALE, 2x3, 2mm, VERT, STR, THT	WURTH ELEKTRONIK, 62000621121
5	4	MH1-MH4	STANDOFF, NYLON, SNAP-ON, 0.50"	WURTH ELEKTRONIK, 702935000
6	1	XJP1	CONN., SHUNT, FEMALE, 2-POS, 2mm	SAMTEC, 2SN-BK-G

**SCHEMATIC DIAGRAM**



NOTES: UNLESS OTHERWISE SPECIFIED

- 1. ALL RESISTORS ARE 0603.
- ALL CAPACITORS ARE 0603.

POWER BY  
**ANALOG DEVICES**  
www.analog.com

PHONE: (408)432-1900

**TITLE: SCHEMATIC**  
42V, 5A SYNCHRONOUS STEP-DOWN  
SILENT SWITCHER WITH 2.5uA QUIESCENT CURRENT

IC NO. LT18636      SCHEMATIC NO. AND REVISION:  
SKU NO. DC2918A      710-DC2918A\_REV02

SIZE: N/A      DATE: Tuesday, August 20, 2019      SHEET 1 OF 1

APPROVALS	
PCB DES.	JW
APP ENG.	ZY

**CUSTOMER NOTICE**  
ANALOG DEVICES HAS MADE A BEST EFFORT TO DESIGN A CIRCUIT THAT MEETS CUSTOMER-SUPPLIED SPECIFICATIONS; HOWEVER, CUSTOMERS ARE RESPONSIBLE TO VERIFY PROPER AND RELIABLE OPERATION IN THE ACTUAL APPLICATION. COMPONENT SUBSTITUTION AND PRINTED CIRCUIT BOARD MANUFACTURING VARIATIONS MAY REQUIRE APPLICATIONS ENGINEERING FOR ASSISTANCE.

THIS CIRCUIT IS PROPRIETARY TO ANALOG DEVICES AND SUPPLIED FOR USE WITH ANALOG DEVICES PARTS.

<Core Design>

Information furnished by Analog Devices is believed to be accurate and reliable. However, no responsibility is assumed by Analog Devices for its use, nor for any infringements of patents or other rights of third parties that may result from its use. Specifications subject to change without notice. No license is granted by implication or otherwise under any patent or patent rights of Analog Devices.



## ESD Caution

**ESD (electrostatic discharge) sensitive device.** Charged devices and circuit boards can discharge without detection. Although this product features patented or proprietary protection circuitry, damage may occur on devices subjected to high energy ESD. Therefore, proper ESD precautions should be taken to avoid performance degradation or loss of functionality.

## Legal Terms and Conditions

By using the evaluation board discussed herein (together with any tools, components documentation or support materials, the "Evaluation Board"), you are agreeing to be bound by the terms and conditions set forth below ("Agreement") unless you have purchased the Evaluation Board, in which case the Analog Devices Standard Terms and Conditions of Sale shall govern. Do not use the Evaluation Board until you have read and agreed to the Agreement. Your use of the Evaluation Board shall signify your acceptance of the Agreement. This Agreement is made by and between you ("Customer") and Analog Devices, Inc. ("ADI"), with its principal place of business at One Technology Way, Norwood, MA 02062, USA. Subject to the terms and conditions of the Agreement, ADI hereby grants to Customer a free, limited, personal, temporary, non-exclusive, non-sublicensable, non-transferable license to use the Evaluation Board FOR EVALUATION PURPOSES ONLY. Customer understands and agrees that the Evaluation Board is provided for the sole and exclusive purpose referenced above, and agrees not to use the Evaluation Board for any other purpose. Furthermore, the license granted is expressly made subject to the following additional limitations: Customer shall not (i) rent, lease, display, sell, transfer, assign, sublicense, or distribute the Evaluation Board; and (ii) permit any Third Party to access the Evaluation Board. As used herein, the term "Third Party" includes any entity other than ADI, Customer, their employees, affiliates and in-house consultants. The Evaluation Board is NOT sold to Customer; all rights not expressly granted herein, including ownership of the Evaluation Board, are reserved by ADI. CONFIDENTIALITY. This Agreement and the Evaluation Board shall all be considered the confidential and proprietary information of ADI. Customer may not disclose or transfer any portion of the Evaluation Board to any other party for any reason. Upon discontinuation of use of the Evaluation Board or termination of this Agreement, Customer agrees to promptly return the Evaluation Board to ADI. ADDITIONAL RESTRICTIONS. Customer may not disassemble, decompile or reverse engineer chips on the Evaluation Board. Customer shall inform ADI of any occurred damages or any modifications or alterations it makes to the Evaluation Board, including but not limited to soldering or any other activity that affects the material content of the Evaluation Board. Modifications to the Evaluation Board must comply with applicable law, including but not limited to the RoHS Directive. TERMINATION. ADI may terminate this Agreement at any time upon giving written notice to Customer. Customer agrees to return to ADI the Evaluation Board at that time. LIMITATION OF LIABILITY. THE EVALUATION BOARD PROVIDED HEREUNDER IS PROVIDED "AS IS" AND ADI MAKES NO WARRANTIES OR REPRESENTATIONS OF ANY KIND WITH RESPECT TO IT. ADI SPECIFICALLY DISCLAIMS ANY REPRESENTATIONS, ENDORSEMENTS, GUARANTEES, OR WARRANTIES, EXPRESS OR IMPLIED, RELATED TO THE EVALUATION BOARD INCLUDING, BUT NOT LIMITED TO, THE IMPLIED WARRANTY OF MERCHANTABILITY, TITLE, FITNESS FOR A PARTICULAR PURPOSE OR NON-INFRINGEMENT OF INTELLECTUAL PROPERTY RIGHTS. IN NO EVENT WILL ADI AND ITS LICENSORS BE LIABLE FOR ANY INCIDENTAL, SPECIAL, INDIRECT, OR CONSEQUENTIAL DAMAGES RESULTING FROM CUSTOMER'S POSSESSION OR USE OF THE EVALUATION BOARD, INCLUDING BUT NOT LIMITED TO LOST PROFITS, DELAY COSTS, LABOR COSTS OR LOSS OF GOODWILL. ADI'S TOTAL LIABILITY FROM ANY AND ALL CAUSES SHALL BE LIMITED TO THE AMOUNT OF ONE HUNDRED US DOLLARS (\$100.00). EXPORT. Customer agrees that it will not directly or indirectly export the Evaluation Board to another country, and that it will comply with all applicable United States federal laws and regulations relating to exports. GOVERNING LAW. This Agreement shall be governed by and construed in accordance with the substantive laws of the Commonwealth of Massachusetts (excluding conflict of law rules). Any legal action regarding this Agreement will be heard in the state or federal courts having jurisdiction in Suffolk County, Massachusetts, and Customer hereby submits to the personal jurisdiction and venue of such courts. The United Nations Convention on Contracts for the International Sale of Goods shall not apply to this Agreement and is expressly disclaimed.