

# COSPHERIC GLASS SPHERE TECHNICAL DATA

A. Villareal

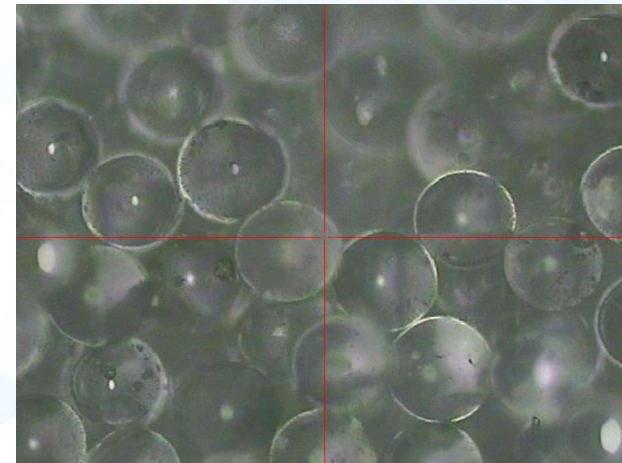
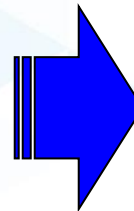


# MATERIAL PROPERTIES:

Typical Properties	COSPHERIC
Hazard Classification	Not Classified as hazardous material
Composition/ Information on ingredients	Glass Oxide Microsphere > 99.9%
OSHA Permissible Exposure Limit [PEL] <ul style="list-style-type: none"><li>• Respirable Fraction</li><li>• Total Dust</li></ul>	5 mg/m <sup>3</sup> 15 mg/m <sup>3</sup>
Physical and Chemical Properties <ul style="list-style-type: none"><li>• Relative Density</li></ul>	Per Product Specification (2.5g/cc)
Glass Sphere Size	90 – 106 microns



Cospheric Glass Sphere Packaging: 10g/ Glass Tube



Cospheric Glass Sphere Actual Appearance [100x Magnification]