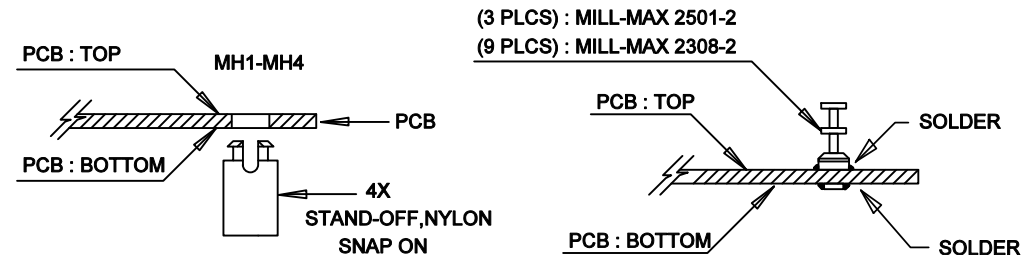
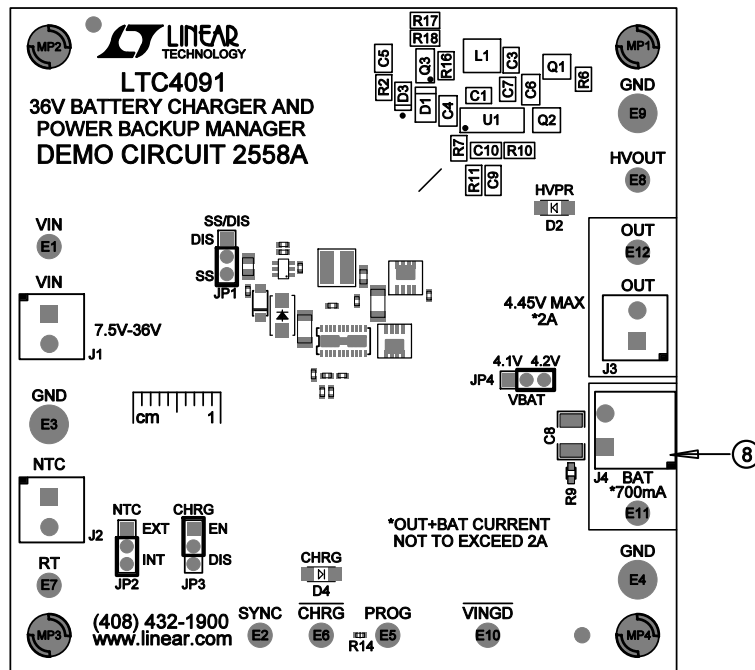



REVISION HISTORY				
ECO	REV	DESCRIPTION	APPR	DATE
-	3	PRODUCTION FAB	WT	04-11-17

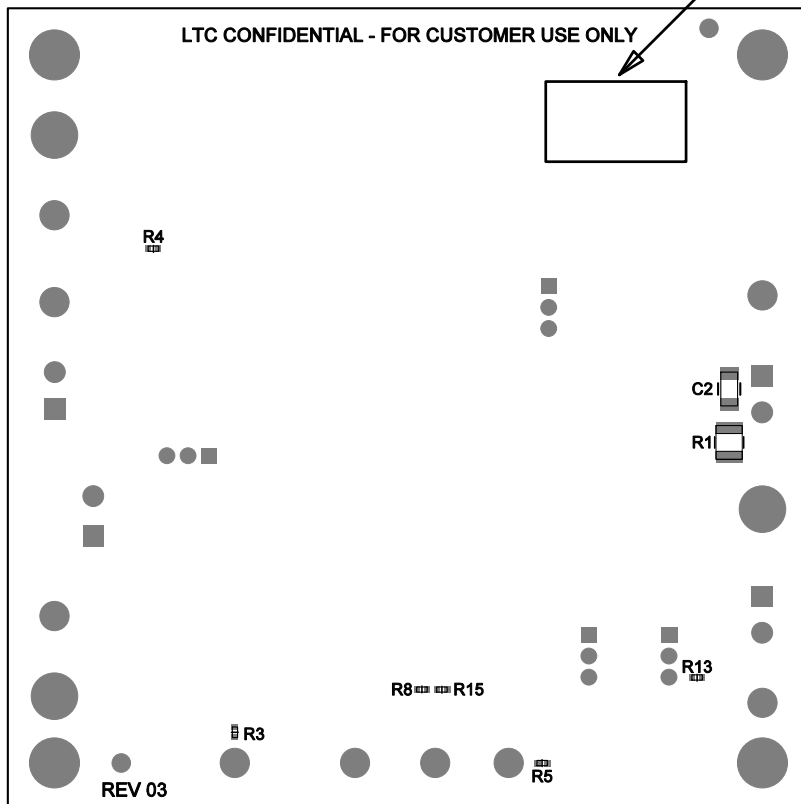
NOTES: UNLESS OTHERWISE SPECIFIED

1. WORKMANSHIP SHALL BE IN ACCORDANCE WITH IPC-A-810.
2. ASSEMBLY PROCESS SHALL INCLUDE: REFLOW SOLDER TOP SIDE SMD.
MAXIMUM SOLDER TEMPERATURE IS 240 DEGREES CELSIUS.
3. PARTS TO OMIT WILL BE SPECIFIED ON THE BILL OF MATERIALS
LOCATIONS OF OMITTED PARTS SHALL BE FREE OF SOLDER.
MASK THE SOLDER STENCIL WHERE SMT PARTS ARE OMITTED.
4. INSTALL JUMPERS AS SHOWN ON ASSY DRAWING.
5. DEPANELIZE BOARDS AFTER ASSEMBLY AND ROUTE-OUT THE BREAKOUT TABS ON FOUR SIDES OF THE BOARD.
6. APPLY ASSEMBLY STAMP OR QA STAMP TO BOTTOM OF BOARD (UNSHOWY AREA).
7. INSTALL TURRETS AND 4 STAND-OFFS AT FOUR CORNERS AS SHOWN BELOW:



8. FINAL ASSEMBLY STEP PRIOR TO ADDING S/N LABEL:
INSERT FEMALE MOUNTING PLUG J5, WURTH PART # 691361300002 INTO MALE TERM. BLOCK HDR. J4, WURTH PART # 691322310002.
9. ENSURE J1-J4 ARE POPULATED WITH OPENINGS ON EACH CONN. FACING OUT AWAY FROM PCB.
10. APPLY DEMO S/N AT AREA ON BOTTOM SIDE AS SHOWN ON SHEET 2.

APPROVALS		 <div> 1830 MCCARTHY BLVD MILPITAS, CA 95035 PH: (408)432-1900 www.Linear.com LTC CONFIDENTIAL- FOR CUSTOMER USE ONLY </div>	
PCB DES.	NC		
APP ENG.	WT	TITLE: TOP ASSEMBLY DRAWING: 36V BATTERY CHARGER AND POWER BACKUP MANAGER	
		SIZE N/A	REV. 3
SCALE = NONE		SHT 1 of 2	



APPROVALS

NC

WT

SCALE = NONE



1630 MCCARTHY BLVD
MILPITAS, CA 95035
PH: (408)432-1900
www.Linear.com
LTC CONFIDENTIAL-
FOR CUSTOMER USE ONLY

TITLE: BOTTOM ASSEMBLY DRAWING:
36V BATTERY CHARGER AND
POWER BACKUP MANAGER

SIZE	IC NO.	LTC4091
N/A		DEMO CIRCUIT 2558A

REV.
3

SHT 2 of 2