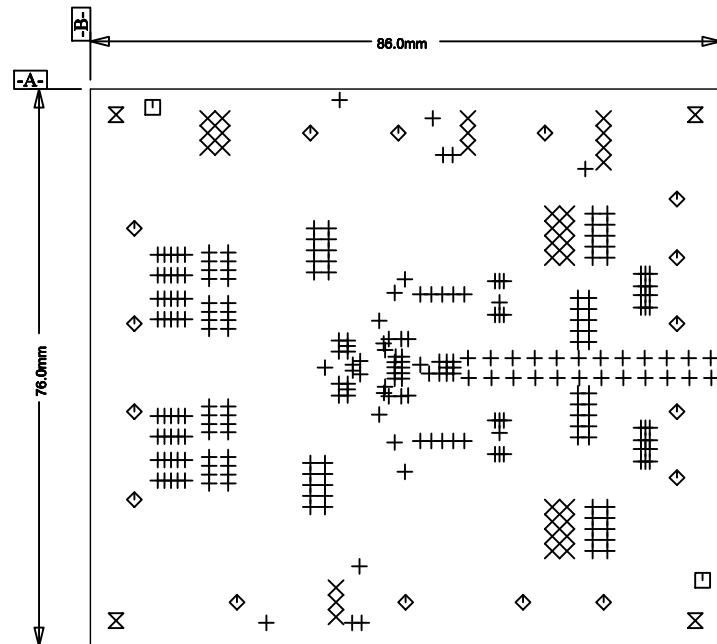
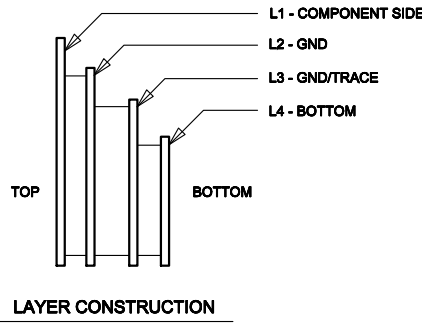




LTC CONFIDENTIAL - For Customer Use Only



TOP COMPONENT SIDE SHOWN

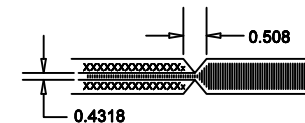


SIZE	QTY	SYM	PLATED	TOL
0.25	264	+	YES	+/-0.08
0.9	32	X	YES	+/-0.13
1.8	2	□	NO	+/-0.13
2.4	16	◇	YES	+/-0.13
4.75	4	⊗	NO	+/-0.13

REVISION HISTORY				
ECO	REV	DESCRIPTION	DATE	APPROVED
	3	PROD	02/28/17	GL

NOTES: UNLESS OTHERWISE SPECIFIED,

- ARTWORK P/N DC2329A REV 3.
- FAB PER IPC-A-600
- PCB SHALL MEET RoHS COMPLIANCE.
- MATERIAL:
  - LAMINATE: EPOXY FIBERGLASS, NEMA GRADE FR-4  
FLAMMABILITY RATING: 94 V-2 MINIMUM .
  - THICKNESS: 1.6 +/- 0.1 mm
  - CLAD: 2 OZ. (50um) ALL LAYERS.
- FINISH:
  - COATING: SOLDERMASK OVER BARE COPPER,  
COLOR, GREEN LPI.
  - PLATING: GOLD IMMERSION BOTH SIDES.
  - SILKSCREEN: COMPONENT SIDE WITH WHITE  
NON-CONDUCTIVE INK.
- TOLERANCES:
  - WARPAGE: (0.075mm) MAX. ALONG THE LONGEST DIAG.  
AS PER IPC-TM650 METHOD 2.4.22.
  - ETCHING: +0.03mm, -0.3mm OF MASTER PATTERN.
  - REGISTRATION: 0.075mm MAX.
  - MASK THICKNESS: 0.025mm MIN., 0.075mm MAX.
  - HOLE PLATING: 22um +/- 3um.
- SIZE:
  - CUT TO DIMENSIONS AND TOLERANCES SHOWN.  
0.00 ARE PRIMARY DATUMS.
- HOLE DIAMETERS ARE POST-PLATED SIZES.
- DEBURR AND BREAK ALL SHARP EDGES.
- DO NOT ALTER ARTWORK e.g. TO ADD LOGO OR DATE CODE.
- SCORING:



<p>UNLESS OTHERWISE SPECIFIED DIMENSIONS ARE IN MILLIMETERS TOLERANCES ON ANGLE ± 1°</p> <p>XX ± 0.25 XXX ± 0.127</p> <p>THIRD ANGLE PROJECTION</p> <p>DO NOT SCALE DRAWING</p>	CONTRACT NO.		<p>1630 McCarthy Blvd. Milpitas, CA 95035</p> <p>Phone: (408)432-1900 Fax: (408)434-0507</p>			
	APPROVALS				DATE	
	DRAWN	09/18/14		TITLE FAB, LTC7124EUDD, 17V, 3.5A, DUAL SYNCHRONOUS STEP-DOWN REGULATOR WITH ULTRA-LOW QUIESCENT CURRENT		
	CHECKED	02/28/17				
APPROVED			SIZE A	CAGE CODE	DWG NO. DC2329A	REV 3
DESIGNED BY			SCALE 1/1	FILENAME: 2329A-3.PCB	SHEET 1 OF 1	