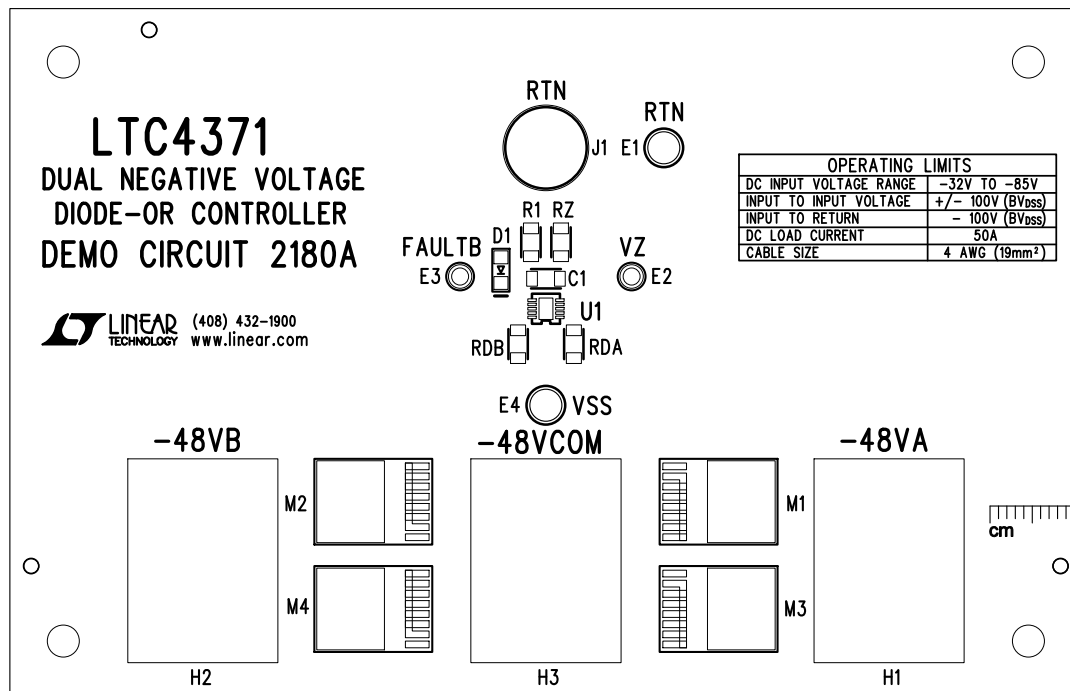


REVISION HISTORY				
ECO	REV	DESCRIPTION	APP. ENG.	DATE
-	4	PRODUCTION	MITCHELL L.	04-19-16

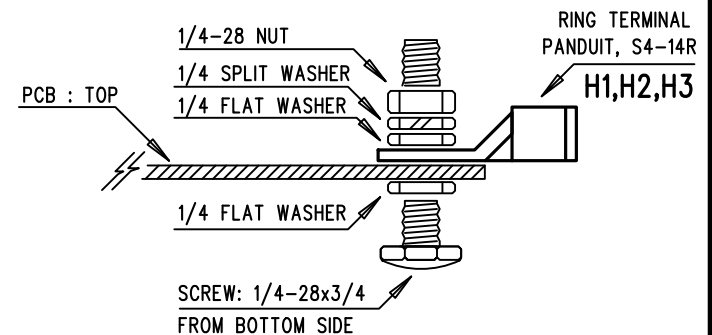



## NOTES: UNLESS OTHERWISE SPECIFIED

1. WORKMANSHIP SHALL BE IN ACCORDANCE WITH IPC-A-610.
2. ASSEMBLY PROCESS SHALL INCLUDE: REFLOW SOLDER TOP SIDE SMD. MAXIMUM SOLDER TEMPERATURE IS 240 DEGREES CELSIUS.
3. PARTS TO OMIT WILL BE SPECIFIED ON THE BILL OF MATERIALS. LOCATIONS OF OMITTED PARTS SHALL BE FREE OF SOLDER. MASK THE SOLDER STENCIL WHERE SMT PARTS ARE OMITTED.
4. NO SHUNT.
5. DEPANELIZE BOARDS AFTER ASSEMBLY AND ROUTE-OUT THE BREAKOUT TABS ON FOUR SIDES OF THE BOARD EDGE.
6. DO NOT APPLY ANY KIND OF ASSEMBLY STAMP OR QA STAMP TO ANY BOARD.
7. INSTALL D1 AS SHOW:



8. INSTALL H1,H2,H3 AS SHOWN:



APPROVALS		 <b>LINEAR TECHNOLOGY</b>		1630 MCCARTHY BLVD MILPITAS, CA 95035 PH: (408)432-1900 www.linear.com LTC CONFIDENTIAL- FOR CUSTOMER USE ONLY	
PCB DES.	KIM T.				
APP ENG.	MITCHELL L.	TITLE: TOP ASSEMBLY DRAWING			
		DUAL NEGATIVE VOLTAGE DIODE-OR CONTROLLER			
		SIZE	IC NO.	LTC4371IDD	REV.
		N/A		DEMO CIRCUIT 2180A	4
SCALE = NONE		FILENAME: DC2180A-4.PCB			SHT 1 OF 1