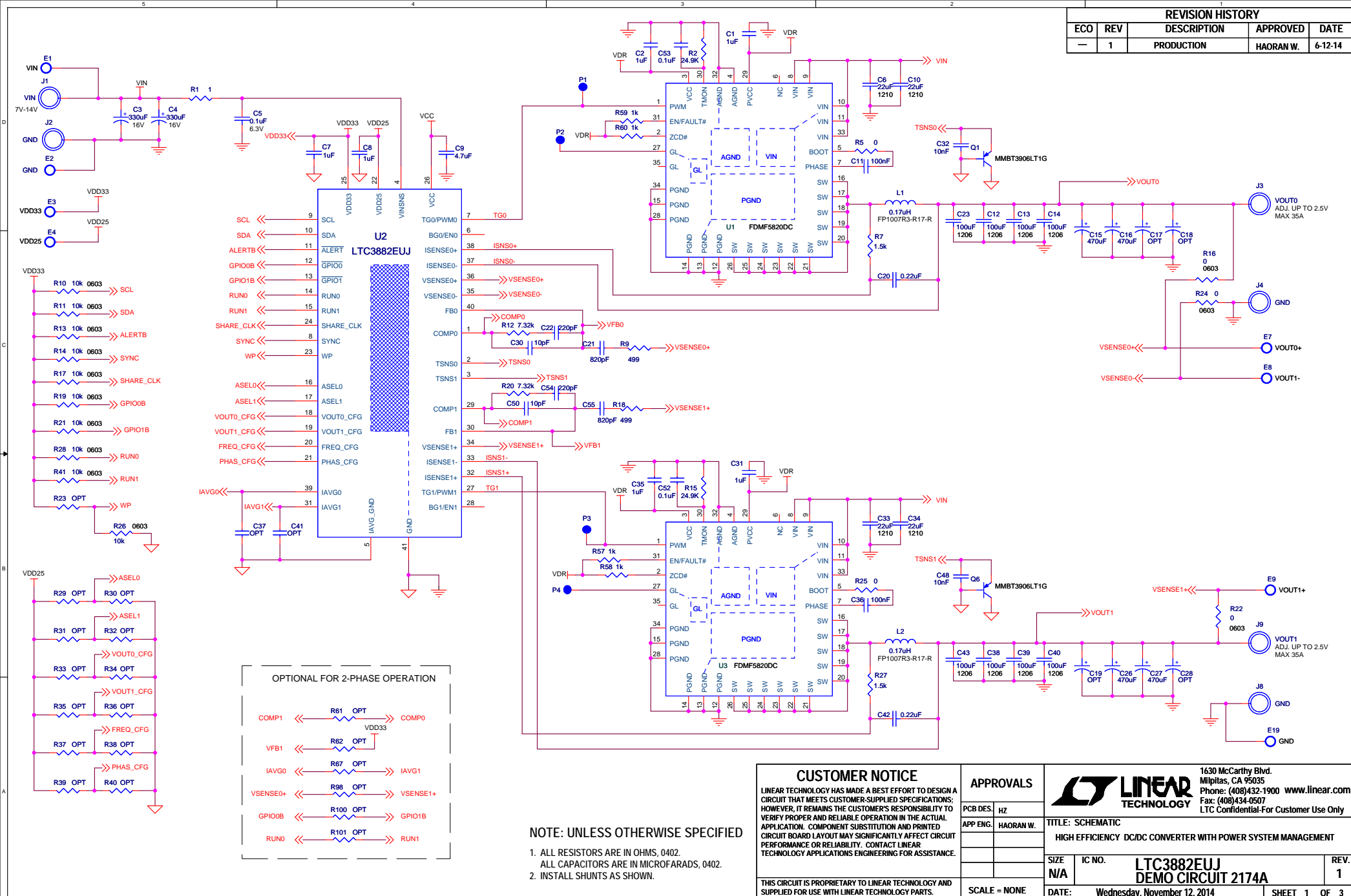
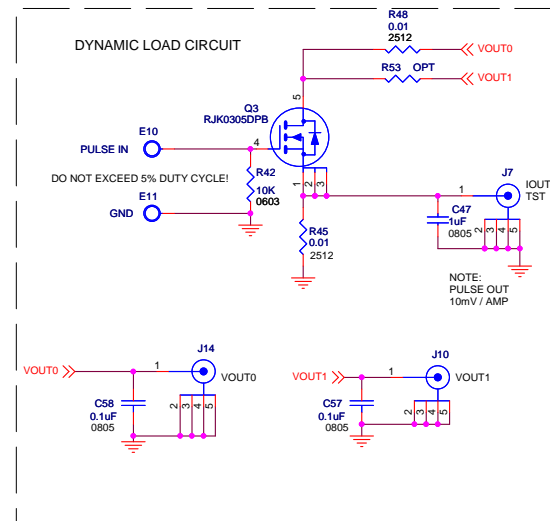
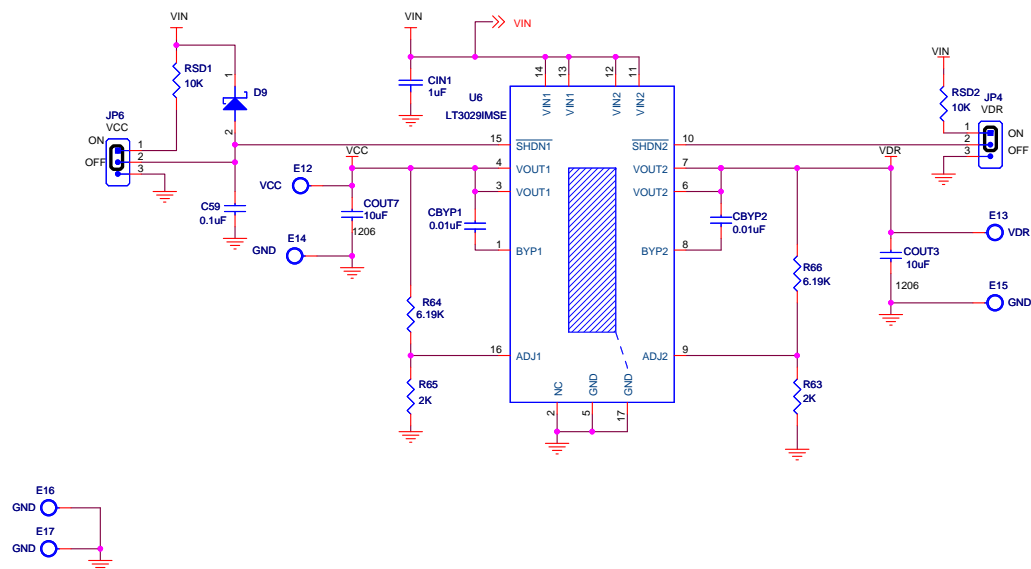


| REVISION HISTORY | | | | |
|------------------|-----|-------------|-----------|---------|
| ECO | REV | DESCRIPTION | APPROVED | DATE |
| — | 1 | PRODUCTION | HAORAN W. | 6-12-14 |



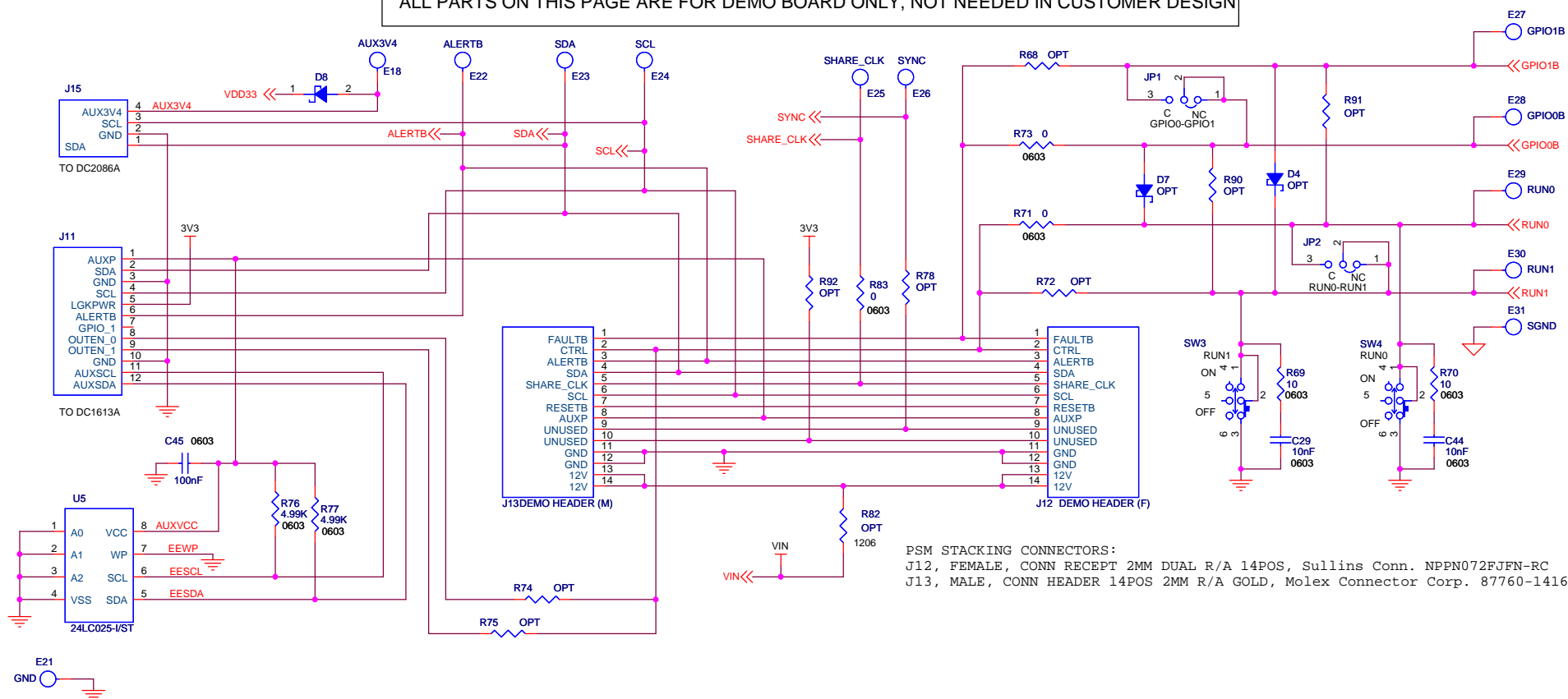
NOTE: UNLESS OTHERWISE SPECIFIED

- ALL RESISTORS ARE IN OHMS, 0402.
- ALL CAPACITORS ARE IN MICROFARADS, 0402.
- INSTALL SHUNTS AS SHOWN.

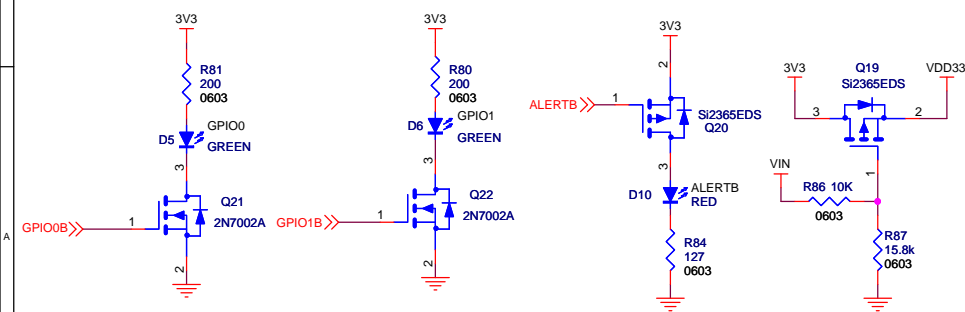


| | | | | | |
|--|--|--|--|--|--|
| CUSTOMER NOTICE LINEAR TECHNOLOGY HAS MADE A BEST EFFORT TO DESIGN A CIRCUIT THAT MEETS CUSTOMER-SUPPLIED SPECIFICATIONS; HOWEVER, IT REMAINS THE CUSTOMER'S RESPONSIBILITY TO VERIFY PROPER AND RELIABLE OPERATION IN THE ACTUAL APPLICATION. COMPONENT SUBSTITUTION AND PRINTED CIRCUIT BOARD LAYOUT MAY SIGNIFICANTLY AFFECT CIRCUIT PERFORMANCE OR RELIABILITY. CONTACT LINEAR TECHNOLOGY APPLICATIONS ENGINEERING FOR ASSISTANCE. | | APPROVALS PCB DES. HZ APP ENG. HAORAN W. SCALE = NONE | | LINEAR TECHNOLOGY 1630 McCarthy Blvd. Milpitas, CA 95035 Phone: (408)432-1900 www.linear.com Fax: (408)434-0507 LTC Confidential-For Customer Use Only | |
| THIS CIRCUIT IS PROPRIETARY TO LINEAR TECHNOLOGY AND SUPPLIED FOR USE WITH LINEAR TECHNOLOGY PARTS. | | TITLE: SCHEMATIC HIGH EFFICIENCY DC/DC CONVERTER WITH POWER SYSTEM MANAGEMENT | | SIZE N/A IC NO. LTC3882EUJ DEMO CIRCUIT 2174A DATE: Wednesday, November 12, 2014 | |
| | | | | REV. 1 SHEET 2 OF 3 | |

ALL PARTS ON THIS PAGE ARE FOR DEMO BOARD ONLY, NOT NEEDED IN CUSTOMER DESIGN



PSM STACKING CONNECTORS:
J12, FEMALE, CONN RECEPT 2MM DUAL R/A 14POS, Sullins Conn. NPPN072FJFN-RC
J13, MALE, CONN HEADER 14POS 2MM R/A GOLD, Molex Connector Corp. 87760-1416



CUSTOMER NOTICE

LINEAR TECHNOLOGY HAS MADE A BEST EFFORT TO DESIGN A CIRCUIT THAT MEETS CUSTOMER-SUPPLIED SPECIFICATIONS; HOWEVER, IT REMAINS THE CUSTOMER'S RESPONSIBILITY TO VERIFY PROPER AND RELIABLE OPERATION IN THE ACTUAL APPLICATION. COMPONENT SUBSTITUTION AND PRINTED CIRCUIT BOARD LAYOUT MAY SIGNIFICANTLY AFFECT CIRCUIT PERFORMANCE OR RELIABILITY. CONTACT LINEAR TECHNOLOGY APPLICATIONS ENGINEERING FOR ASSISTANCE.

APPROVALS

| | |
|----------|----------|
| PCB DES. | HZ |
| APP ENG. | HAORAN W |
| | |
| | |
| | |



1630 McCarthy Blvd.
Milpitas, CA 95035
Phone: (408)432-1900 www.linear.com
Fax: (408)434-0507
LTC Confidential-For Customer Use Only

| |
|--|
| TITLE: SCHEMATIC |
| HIGH EFFICIENCY DC/DC CONVERTER WITH POWER SYSTEM MANAGEMENT |

| | |
|-------------|--|
| SIZE N/A | IC NO. LTC3882EUJ DEMO CIRCUIT 2174A |
|-------------|--|

| | |
|------|---|
| REV. | 1 |
|------|---|

THIS CIRCUIT IS PROPRIETARY TO LINEAR TECHNOLOGY AND
SUPPLIED FOR USE WITH LINEAR TECHNOLOGY PARTS.

SCALE = NONE

DATE: Wednesday, November 12, 2014

SHEET 3 OF 3