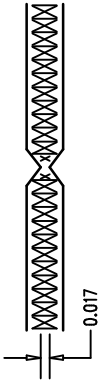


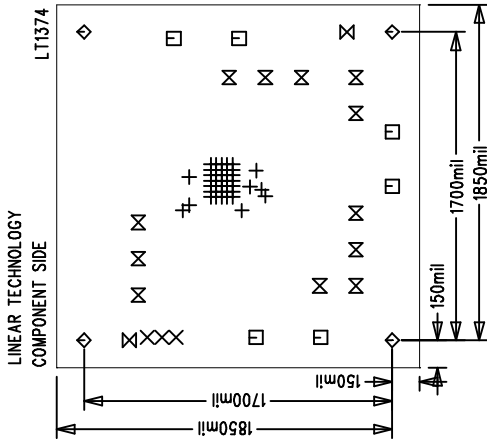
REVISIONS			
REV	DESCRIPTION	APPR	DATE
A	PROTOTYPE RELEASE		0/0/01

NOTES : Unless Otherwise Specified

1. MATERIAL : FR4 OR EQUIVALENT EPOXY, 2 OZ. COPPER CLAD  
THICKNESS .062 +/--.006 TOTAL OF 4 LAYERS
2. FINISH : ALL PLATED HOLES .001 MIN. / .0015 MAX. COPPER PLATE  
ELECTRODEPOSITED TIN-LEAD COMPOSITION  
BEFORE REFLOW , SOLDER MASK OVER BARE COPPER (SMOBC)
3. SOLDER MASK : BOTH SIDES USING GREEN SR1020 OR EQUIVALENT
4. SILKSCREEN : USING WHITE NON-CONDUCTIVE EPOXY INK
5. ALL DIMENSIONS ARE IN INCHES
6. SCORING:



SIZE	QTY	SYM	PLTD
10	43	+	PLTD
31	3	×	PLTD
94	6	□	PLTD
125	4	◇	PLTD
70	2	⊗	NPLTD
62	12	⊗	PLTD



Fabrication Drawing

APPROVALS		INIT		DATE	
DRAWN					
CHECK					
DESIGN		RMB		OCT'01	
ENGR					
SCALE = NONE		DES-230495		SHT 1 of 1	

1630 McCarthy Blvd.  
Milpitas, CA 95035  
PH: (408)432-1900

TECHNOLOGY

TITLE: 4A, 500KHz Step Down  
Switching Regulator (LT1374CFE)

SIZE	A	REV.	A
DEMO BOARD	474		