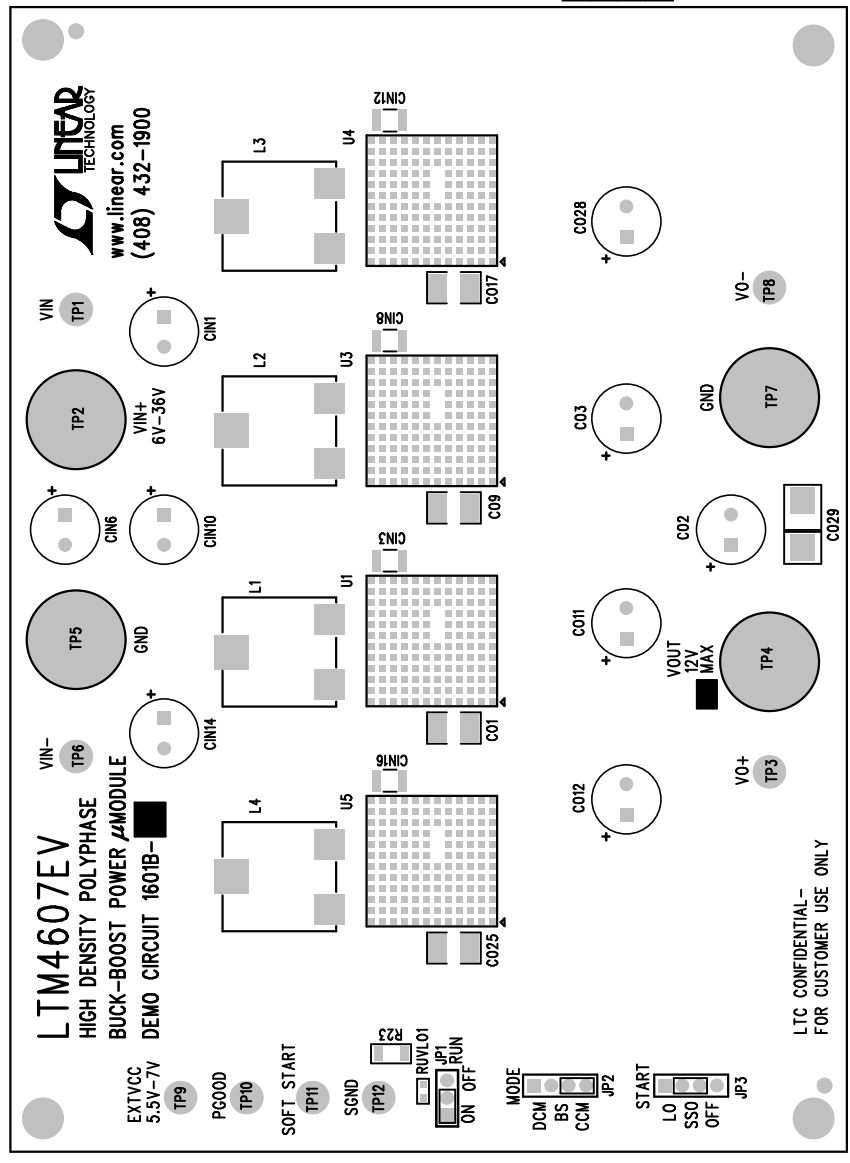


REVISION HISTORY			
ECO	REV	DESCRIPTION	DATE
1	1	PRODUCTION	7-20-11

SIDE SMD.

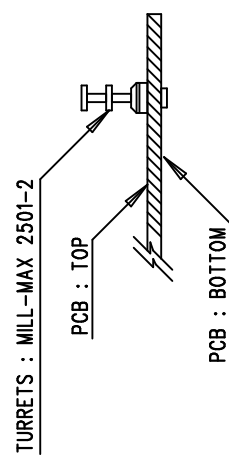
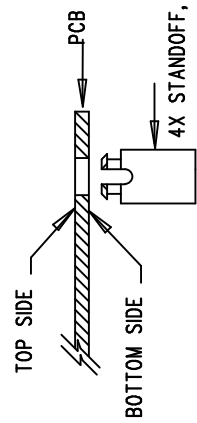
NOTES: UNLESS OTHERWISE SPECIFIED

1. WORKMANSHIP SHALL BE IN ACCORDANCE WITH IPC-A-610.
2. ASSEMBLY PROCESS SHALL INCLUDE: REFLOW SOLDER TOP SIDE SMD.
3. PARTS TO OMIT WILL BE SPECIFIED ON THE BILL OF MATERIALS. LOCATIONS OF OMITTED PARTS SHALL BE FREE OF SOLDER. MASK THE SOLDER STENCIL WHERE SMT PARTS ARE OMITTED.
4. INSTALL SHUNTS AS SHOWN ON ASSY DRAWING.
5. DEANELIZE BOARDS AFTER ASSEMBLY AND ROUTE-OUT THE BREAKOUT TABS ON FOUR SIDES OF THE BOARD EDGE.
6. DO NOT APPLY ANY KIND OF ASSEMBLY STAMP OR QA STAMP TO ANY BOARD.
7. INSTALL 4 STANDOFFS AT 4 CORNERS AS SHOWN BELOW:

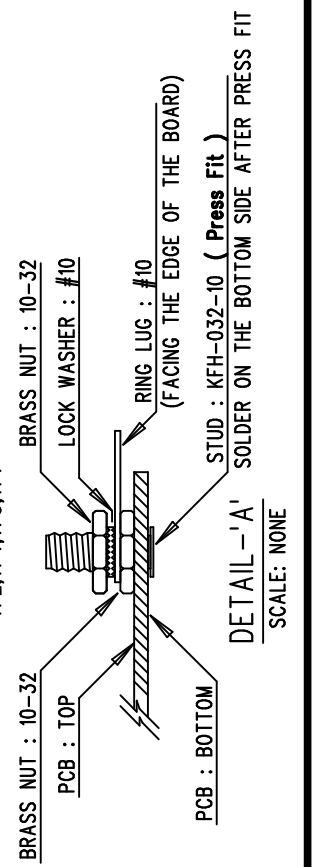


8. MARK EACH LTC PART NUMBER AND ASSEMBLY TYPE WITH BLACK PERMANENT MARKER AS SHOWN IN TABLE BELOW:

ASSY	U1	U3	U4	U5	VOUT
-A	LTM4607EV	LTM4607EV	—	—	10A MAX
-B	LTM4607EV	LTM4607EV	LTM4607EV	—	15A MAX
-C	LTM4607EV	LTM4607EV	LTM4607EV	LTM4607EV	20A MAX



APPROVALS		TITLE: TOP ASSEMBLY DRAWING	
PCB DES.	HZ	HIGH DENSITY POLYPHASE	
APP ENG.	SAM Y.	BUCK-BOOST POWER μMODULE	
SCALE = NONE		SIZE N/A	REV. 1
		DEMO LTM4607EV	1601B
		DEMO CIRCUIT	1601B
		FILENAME: DC1601B-1.PCB	SHT 1 of 2



LINEAR TECHNOLOGY
1630 MCCARTHY BLVD
MILPITAS, CA 95035
PH: (408) 432-1900
LTC CONFIDENTIAL
FOR CUSTOMER USE ONLY