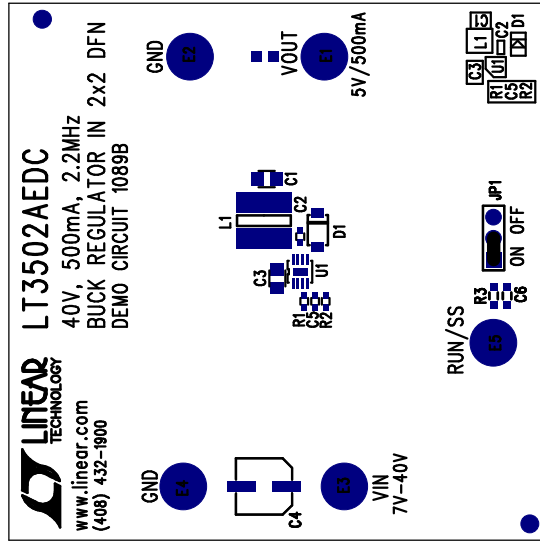
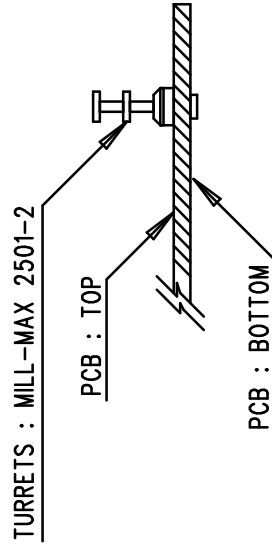



**NOTES: UNLESS OTHERWISE SPECIFIED**

1. WORKMANSHIP SHALL BE IN ACCORDANCE WITH IPC-A-610.
2. ASSEMBLY PROCESS SHALL INCLUDE: REFLOW SOLDER TOP SIDE SMD.
3. PARTS TO OMIT WILL BE SPECIFIED ON THE BILL OF MATERIALS. LOCATIONS OF OMITTED PARTS SHALL BE FREE OF SOLDER. MASK THE SOLDER STENCIL WHERE SMT PARTS ARE OMITTED.
4. INSTALL SHUNTS AS SHOWN ON ASSY DRAWING.
5. DEPANELIZE BOARDS AFTER ASSEMBLY AND ROUTE-OUT THE BREAKOUT TABS ON FOUR SIDES OF THE BOARD EDGE.
6. DO NOT APPLY ANY KIND OF ASSEMBLY STAMP OR QA STAMP TO ANY BOARD.



## APPROVALS

PCB DES.	JW	 <b>TECHNOLOGY</b> <a href="http://www.linear.com">www.linear.com</a> LTC CONFIDENTIAL- FOR CUSTOMER USE ONLY
APP ENG.	MOLLY Z.	
TITLE: TOP ASSEMBLY DRAWING		
40V, 500mA, 2.2MHz BUCK REGULATOR IN 2x2 DFN		
SIZE	IC NO.	REV.
N/A	LT3502AEDC	1
DEMO CIRCUIT 1089B		
FILENAME: 1089B-1.PCB		SHT 1 OF 1
SCALE = NONE		

1630 MCCARTHY BLVD  
MILPITAS, CA 95035  
PH: (408)432-1900  
WWW.LINEAR.COM  
LTC CONFIDENTIAL-  
FOR CUSTOMER USE ONLY



**TITLE: TOP ASSEMBLY DRAWING**

40V, 500mA, 2.2MHz BUCK REGULATOR IN 2x2 DFN

SIZE	IC NO.	REV.
N/A	LT3502AEDC	1
DEMO CIRCUIT 1089B		

FILENAME:	1089B-1.PCB	SHT 1 OF 1
-----------	-------------	------------