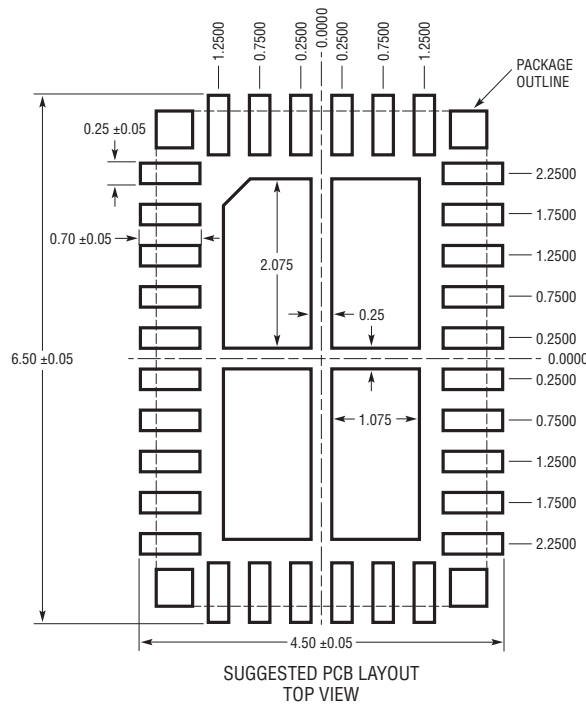
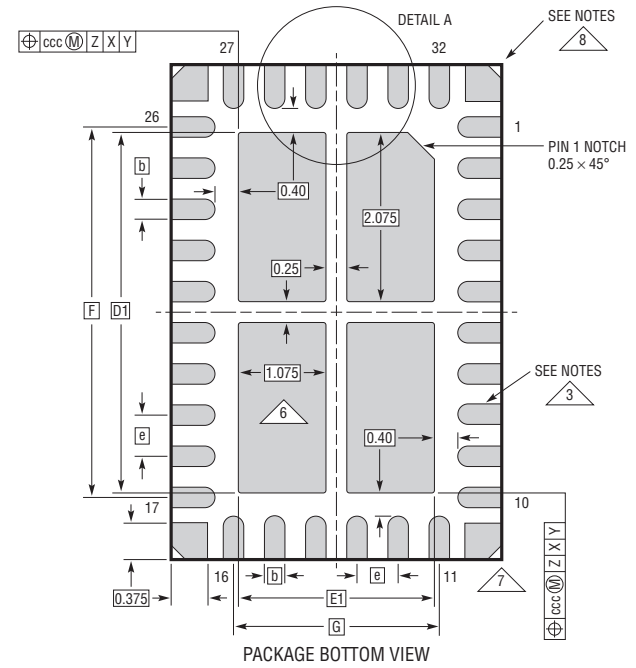
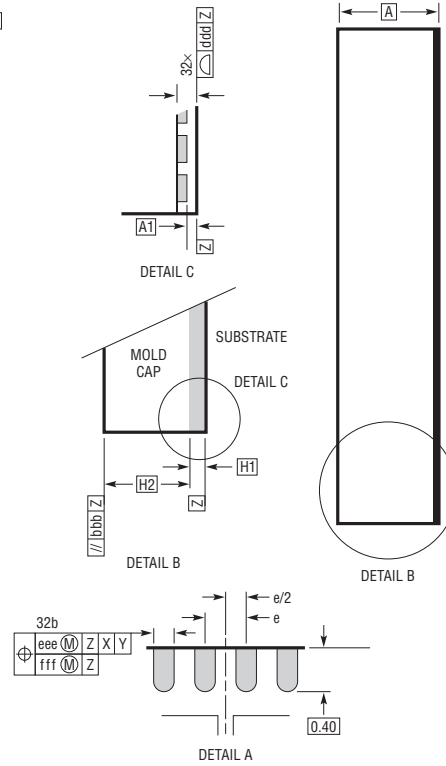
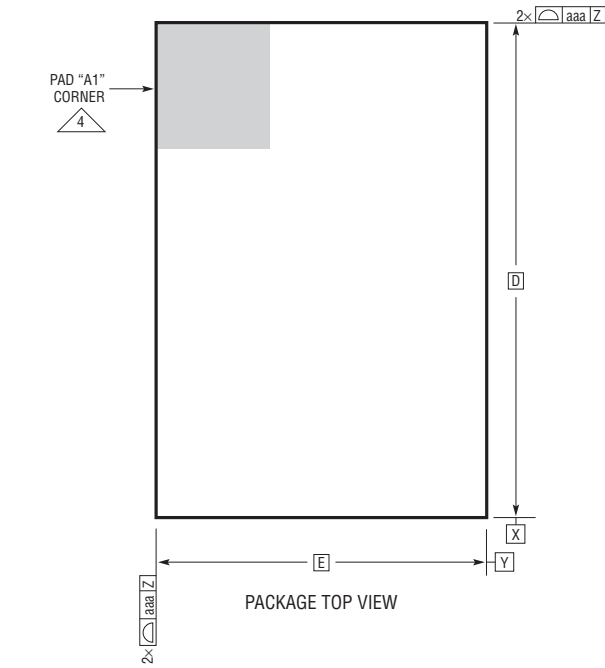


LGA Package
32-Lead (6mm × 4mm × 0.94mm)
 (Reference LTC DWG # 05-08-1557 Rev 0)



DIMENSIONS				
SYMBOL	MIN	NOM	MAX	NOTES
A	0.85	0.94	1.03	
A1	0.01	0.02	0.03	
b	0.22	0.25	0.28	
D		6.00		
E		4.00		
e		0.50		
F		4.50		
G		2.50		
D1		4.40		
E1		2.40		
H1	0.20	0.24	0.28	
H2	0.65	0.70	0.75	
aaa			0.10	
bbb			0.10	
ccc			0.08	
ddd			0.10	
eee			0.15	
fff			0.08	

TOTAL NUMBER OF LGA PADS: 32

NOTES:
 1. DIMENSIONING AND TOLERANCING PER ASME Y14.5M-1994
 2. ALL DIMENSIONS ARE IN MILLIMETERS

- 3 METAL FEATURES UNDER THE SOLDER MASK OPENING NOT SHOWN SO AS NOT TO OBSCURE THESE TERMINIALS AND HEAT FEATURES
- 4 DETAILS OF PAD #1 IDENTIFIER ARE OPTIONAL, BUT MUST BE LOCATED WITHIN THE ZONE INDICATED. THE PAD #1 IDENTIFIER MAY BE EITHER A MOLD OR MARKED FEATURE
- 5. PRIMARY DATUM -Z- IS SEATING PLANE
- 6 THE EXPOSED HEAT FEATURE IS SEGMENTED AND ARRANGED IN A MATRIX FORMAT. IT MAY HAVE OPTIONAL CORNER RADIUS ON EACH SEGMENT
- 7 CORNER SUPPORT PAD CHAMFER IS OPTIONAL
- 8 PACKAGE ROW AND COLUMN LABELING MAY VARY AMONG PRODUCTS. REVIEW EACH PACKAGE LAYOUT CAREFULLY

