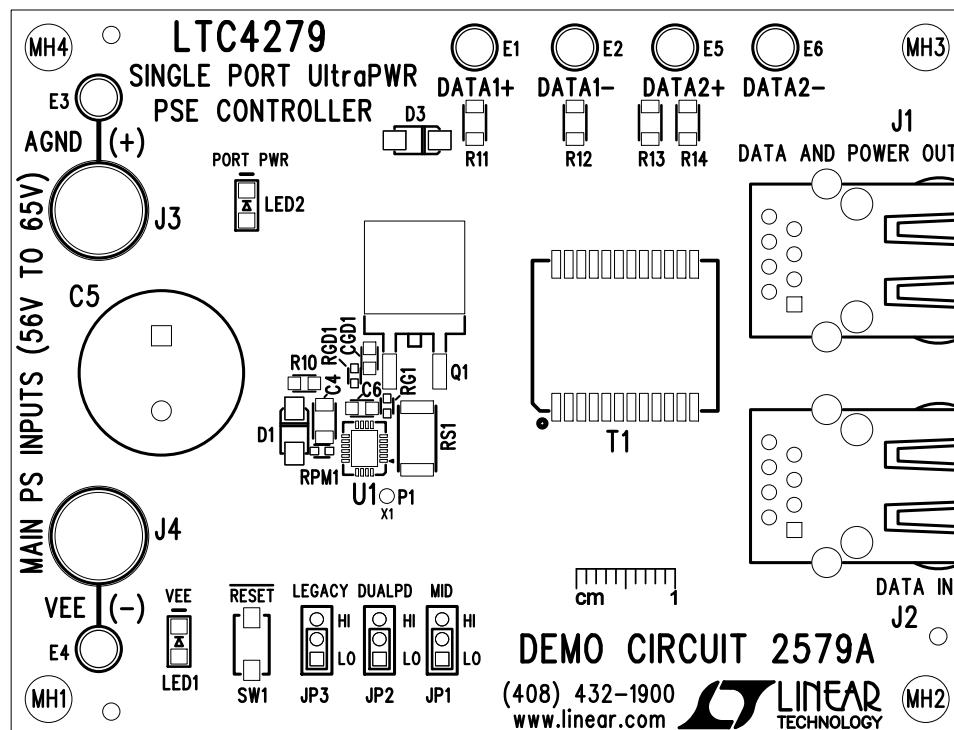
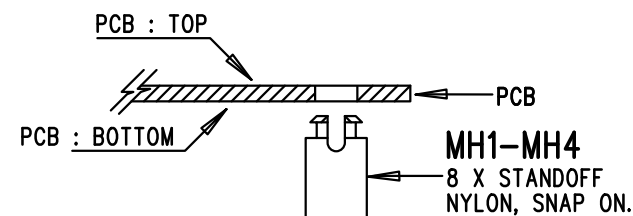



REVISION HISTORY				
ECO	REV	DESCRIPTION	APP. ENG.	DATE
-	2	PRODUCTION	DILIAN R.	07-10-17



NOTES: UNLESS OTHERWISE SPECIFIED

1. WORKMANSHIP SHALL BE IN ACCORDANCE WITH IPC-A-610.
2. ASSEMBLY PROCESS SHALL INCLUDE: REFLOW SOLDER TOP SIDE SMD. MAXIMUM SOLDER TEMPERATURE IS 240 DEGREES CELSIUS.
3. PARTS TO OMIT WILL BE SPECIFIED ON THE BILL OF MATERIALS. LOCATIONS OF OMITTED PARTS SHALL BE FREE OF SOLDER. MASK THE SOLDER STENCIL WHERE SMT PARTS ARE OMITTED.
4. INSTALL SHUNTS AS SHOWN.
5. DEPANELIZE BOARDS AFTER ASSEMBLY AND ROUTE-OUT THE BREAKOUT TABS ON FOUR SIDES OF THE BOARD EDGE.
6. DO NOT APPLY ANY KIND OF ASSEMBLY STAMP OR QA STAMP TO ANY BOARD.
7. INSTALL STANDOFFS AS SHOWN BELOW:



APPROVALS		 LINEAR TECHNOLOGY		1630 MCCARTHY BLVD MILPITAS, CA 95035 PH: (408)432-1900 www.linear.com LTC CONFIDENTIAL- FOR CUSTOMER USE ONLY	
PCB DES.	KIM T.				
APP ENG.	DILIAN R.	TITLE: TOP ASSEMBLY DRAWING SINGLE PORT UltraPWR PSE CONTROLLER			
		SIZE N/A	IC NO. LTC4279IUFD DEMO CIRCUIT 2579A	REV. 2	
SCALE = NONE		FILENAME: DC2579A-2.PCB		SHT 1 OF 2	



LINEAR
TECHNOLOGY

1630 MCCARTHY BLVD
MILPITAS, CA 95035
PH: (408)432-1900
www.linear.com
LTC CONFIDENTIAL-
FOR CUSTOMER USE ONLY

TITLE: TOP ASSEMBLY DRAWING

SINGLE PORT UltraPWR PSE CONTROLLER

SIZE N/A	IC NO. LTC4279IUF DEMO CIRCUIT 2579A	REV. 2
-------------	---	-----------

FILENAME:	DC2579A-2.PCB	SHT 1 OF 2
-----------	---------------	------------

FILENAME: DC2579A-2.PCB