

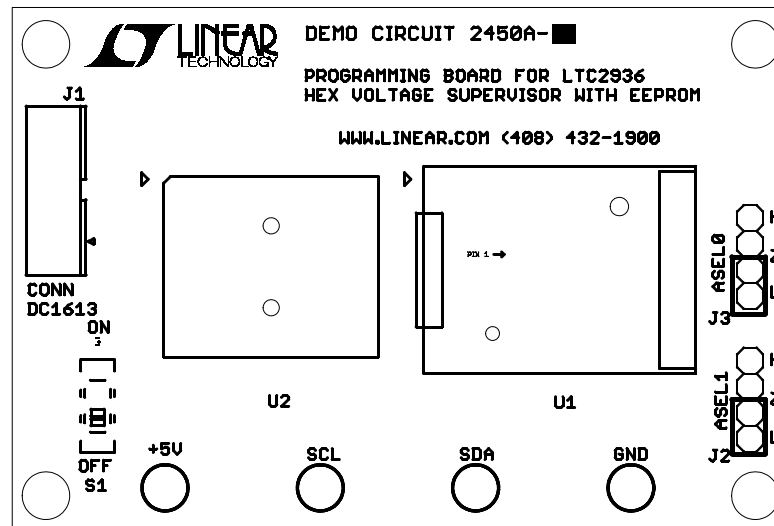
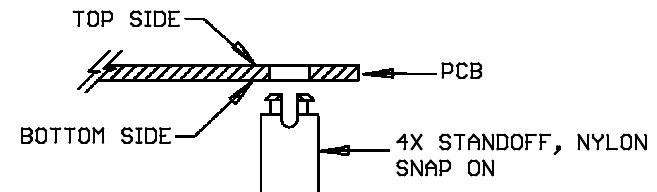
REVISION HISTORY

ECO	REV	DESCRIPTION	APPROVED	DATE
-	1	PRODUCTION	NATHAN E.	08-30-15

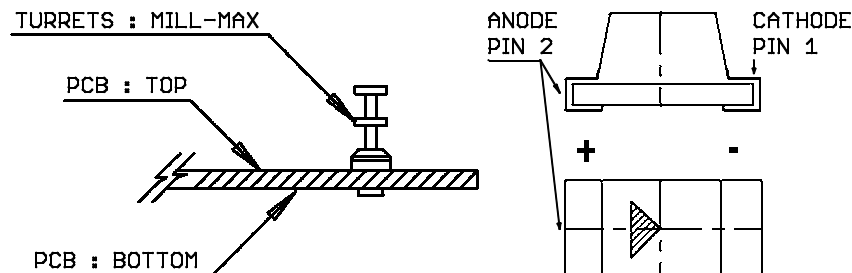
NOTES: UNLESS OTHERWISE SPECIFIED

1. WORKMANSHIP SHALL BE IN ACCORDANCE WITH IPC-A-610.
2. PARTS TO OMIT WILL BE SPECIFIED ON THE BILL OF MATERIALS. MASK THE SOLDER STENCIL WHERE SMT PARTS ARE OMITTED.
3. DEPANELIZE BOARDS AFTER ASSEMBLY AND ROUTE-OUT THE BREAKOUT TABS ON 4 SIDES OF THE BOARD EDGE.
4. ASSY PROCESS SHALL INCLUDE: REFLOW SOLDER TOP AND BOTTOM SIDE SMD.
5. DO NOT APPLY ANY KIND OF ASSEMBLY STAMP OR QA STAMP ON ANY BOARD.

6. INSTALL 4 STANDOFFS AT 4 CORNERS FROM THE BOTTOM SIDE.



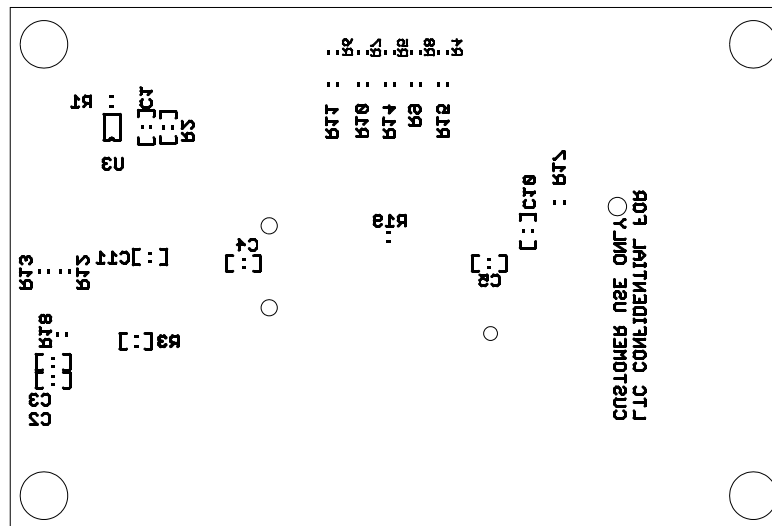
7. INSTALL TURRETS and LEDS AS SHOWN BELOW:


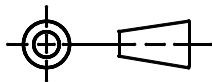


UNLESS OTHERWISE SPECIFIED DIMENSIONS ARE IN INCHES TOLERANCES ON ANGLE +/- 1° 0.XX" = +/- 0.01" 0.XXX" = +/- 0.005" INTERPRET DIM AND TOL PER ASME Y14.5M-1994	APPROVALS			1630 MCCARTHY BLVD. MILPITAS, CA 95033 PH: (408) 432-1900 LTC CONFIDENTIAL FOR CUSTOMER USE ONLY	
	PCB DES. ENG	NAME NATHAN E.	DATE 08-38-15		
THIRD ANGLE PROJECTION				TITLE: TOP ASSEMBLY DRAWING PROGRAMMING BOARD FOR HEX VOLTAGE SUPERVISOR WITH EEPROM	
				SIZE N/A	IC NO. LTC2936 DEMO CIRCUIT 2450A
DO NOT SCALE DRAWING	SCALE: NONE	FILENAME: DC2450A	SHEET 1 OF 13	REV 1	

REVISION HISTORY

ECO	REV	DESCRIPTION	APPROVED	DATE
-	1	PRODUCTION	NATHAN E.	08-30-15

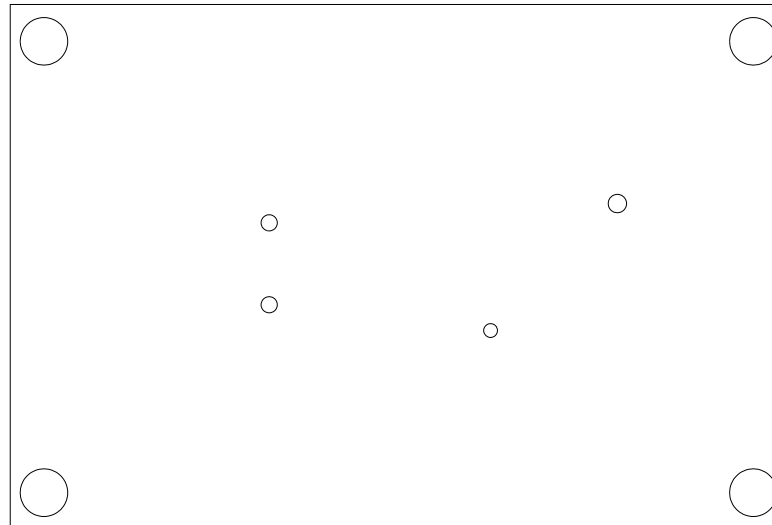
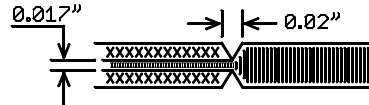


<p>UNLESS OTHERWISE SPECIFIED DIMENSIONS ARE IN INCHES TOLERANCES ON ANGLE +/- 1° 0.XX" = +/- 0.01" 0.XXX" = +/- 0.005" INTERPRET DIM AND TOL PER ASME Y14.5M-1994</p>	APPROVALS			 <p>1630 MCCARTHY BLVD. MILPITAS, CA 95033 PH: (408) 432-1900 LTC CONFIDENTIAL FOR CUSTOMER USE ONLY</p>
	PCB DES.	R.S.	08-38-15	
THIRD ANGLE PROJECTION	ENG	NATHAN E.	08-38-15	<p>TITLE: BOTTOM ASSEMBLY DRAWING PROGRAMMING BOARD FOR HEX VOLTAGE SUPERVISOR WITH EEPROM</p>
				
DO NOT SCALE DRAWING	SCALE: NONE	FILENAME: DC2450A	<p>SIZE N/A</p> <p>IC NO. LTC2936 DEMO CIRCUIT 2450A</p>	<p>REV 1</p>
		SHEET 2 OF 13		

NOTES: UNLESS OTHERWISE SPECIFIED

1. FAB PER IPC-A-600.
2. MATERIAL: EPOXY FIBERGLASS, NEMA GRADE FR-4
FINISHED THICKNESS TO BE 0.062" +/-0.005"
4-LAYER BOARD, 2 OZ. CU ON OUTER LAYERS,
1 OZ. CU ON INNER LAYERS,
FLAMMABILITY RATING: 94 V-2 MINIMUM.
3. SIZE: CUT TO DIMENSIONS AND TOLERANCES SHOWN.
0.00" ARE PRIMARY DATUMS.
4. FINISH: SMOBC USING LPI BOTH SIDES, COLOR BLACK.
ENIG FINISH. LEAD FREE SOLDER CAN BE USED
FOR PROTOTYPE BOARDS.
HIGH DEFINITION WHITE SILKSCREEN.

5. DRILL: PLATE THRU ALL HOLES WITH COPPER, 0.001"
THICK MIN. ALL HOLES SHALL BE DRILLED
+/-0.003" WITH RESPECT TO CTR. OF DRILLED
PAD. ALL HOLES FINISHED SIZE AFTER PLATING.
6. DROP ALL UNUSED PADS ON INNER LAYERS.
7. DO NOT ALTER ARTWORK e.g. TO ADD LOGO OR DATE CODE.
PAD SIZE CAN BE MODIFIED TO MEET END FINISH.
8. PCBs ARE TO BE RoHS COMPLIANT.
9. SCORING FOR PANELIZED PCB:



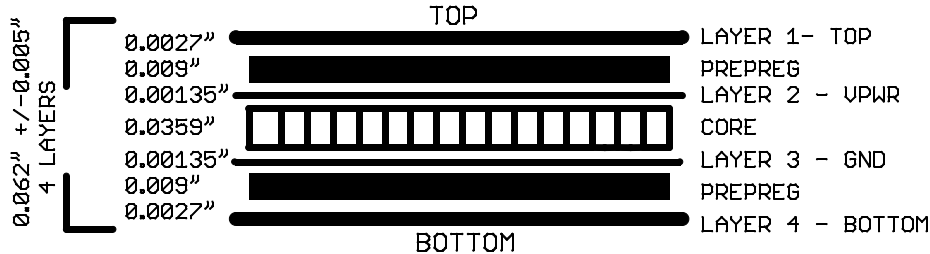
REVISION HISTORY

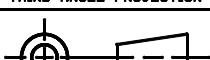

ECO	REV	DESCRIPTION	APPROVED	DATE
-	1	PRODUCTION	NATHAN E.	08-30-15

DRILL TABLE

Sym	Nº	Mils	MM	Qty	Plated
+	1	10	0.25	47	YES
x	2	19	0.47	24	YES
□	3	22	0.56	24	YES
◇	4	35	0.90	6	YES
⊠	5	36	0.91	12	YES
⊞	6	39	1.00	1	YES
+	7	40	1.02	8	YES
+	8	53	1.35	1	NOT
x	9	62	1.59	2	NOT
x	10	71	1.80	1	NOT
▽	11	96	2.44	4	YES
△	12	183	4.65	4	NOT

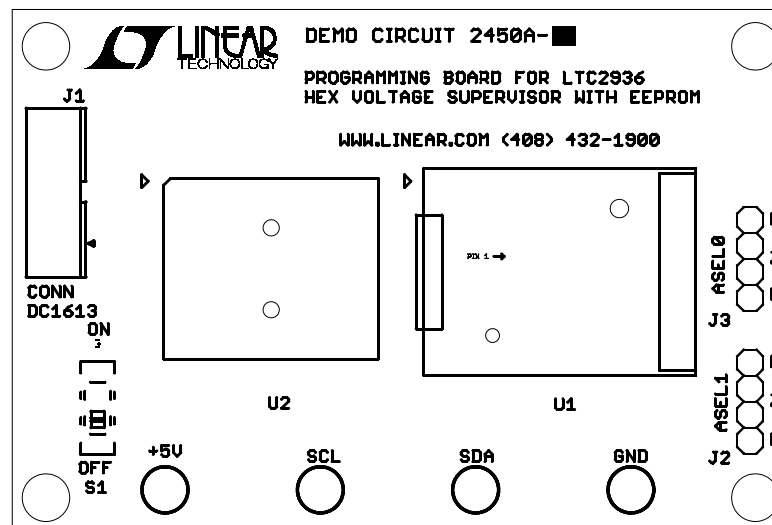
LAYER STRUCTURE


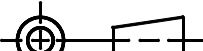


UNLESS OTHERWISE SPECIFIED DIMENSIONS ARE IN INCHES TOLERANCES ON ANGLE +/- 1° 0.XX" = +/- 0.01" 0.XXX" = +/- 0.005" INTERPRET DIM AND TOL PER ASME Y14.5M-1994 THIRD ANGLE PROJECTION  DO NOT SCALE DRAWING	APPROVALS			 1630 MCCARTHY BLVD. MILPITAS, CA 95033 PH: (408) 432-1988 LTC CONFIDENTIAL FOR CUSTOMER USE ONLY
		NAME	DATE	
	PCB DES.	R.S.	08-38-15	
	ENG	NATHAN E.	08-38-15	
TITLE: FABRICATION DRAWING PROGRAMMING BOARD FOR HEX VOLTAGE SUPERVISOR WITH EEPROM				
SIZE N/A		IC NO. LTC2936 DEMO CIRCUIT 2450A		REV 1
SCALE: NONE		FILENAME: DC2450A		SHEET 3 OF 13

REVISION HISTORY

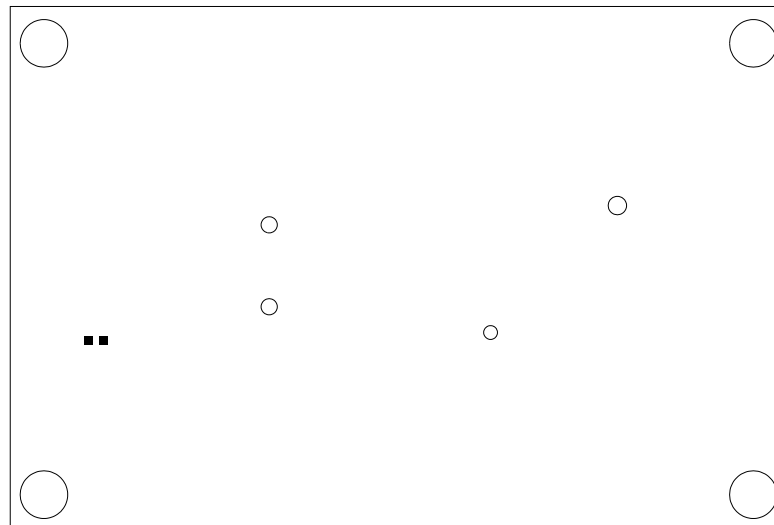
ECO	REV	DESCRIPTION	APPROVED	DATE
-	1	PRODUCTION	NATHAN E.	08-30-15


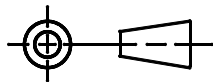


UNLESS OTHERWISE SPECIFIED DIMENSIONS ARE IN INCHES TOLERANCES ON ANGLE +/- 1° 0.XX" = +/- 0.01" 0.XXX" = +/- 0.005" INTERPRET DIM AND TOL PER ASME Y14.5M-1994	APPROVALS			 1638 MCCARTHY BLVD. MILPITAS, CA 95033 PH: (408) 432-1900 LTC CONFIDENTIAL FOR CUSTOMER USE ONLY	
		NAME	DATE		
	PCB DES.	R.S.	08-38-15		
	ENG	NATHAN E.	08-38-15		
THIRD ANGLE PROJECTION				TITLE: TOP SILKSCREEN PROGRAMMING BOARD FOR HEX VOLTAGE SUPERVISOR WITH EEPROM	
					
DO NOT SCALE DRAWING	SCALE: NONE	FILENAME: DC2450A	SIZE N/A	IC NO. LTC2936 DEMO CIRCUIT 2450A	REV 1
			SHEET 4 OF 13		

REVISION HISTORY

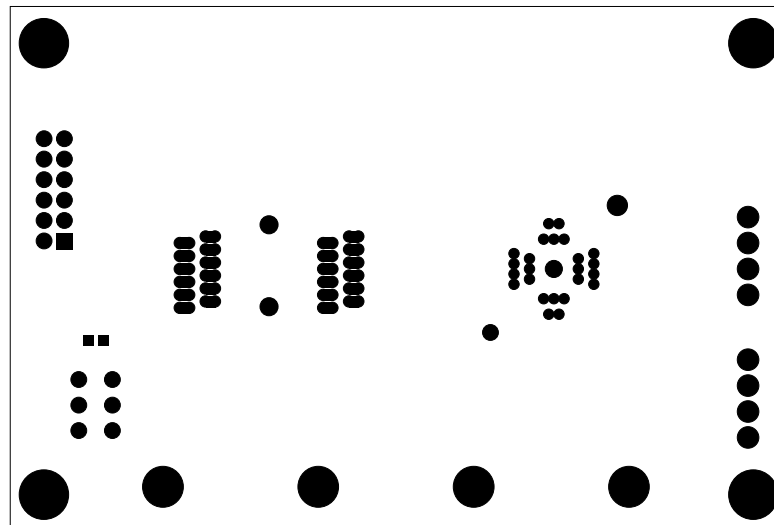
ECO	REV	DESCRIPTION	APPROVED	DATE
-	1	PRODUCTION	NATHAN E.	08-30-15


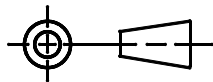


UNLESS OTHERWISE SPECIFIED DIMENSIONS ARE IN INCHES TOLERANCES ON ANGLE +/- 1° 0.XX" = +/- 0.01" 0.XXX" = +/- 0.005" INTERPRET DIM AND TOL PER ASME Y14.5M-1994	APPROVALS			 1630 MCCARTHY BLVD. MILPITAS, CA 95033 PH: (408) 432-1988 LTC CONFIDENTIAL FOR CUSTOMER USE ONLY					
		NAME	DATE						
	PCB DES.	R.S.	08-38-15	TITLE: TOP PASTE PROGRAMMING BOARD FOR HEX VOLTAGE SUPERVISOR WITH EEPROM					
	ENG	NATHAN E.	08-38-15						
THIRD ANGLE PROJECTION				SIZE N/A			IC NO. LTC2936		REV 1
							DEMO CIRCUIT 2450A		
DO NOT SCALE DRAWING	SCALE: NONE			FILENAME: DC2450A		SHEET 5 OF 13			

REVISION HISTORY

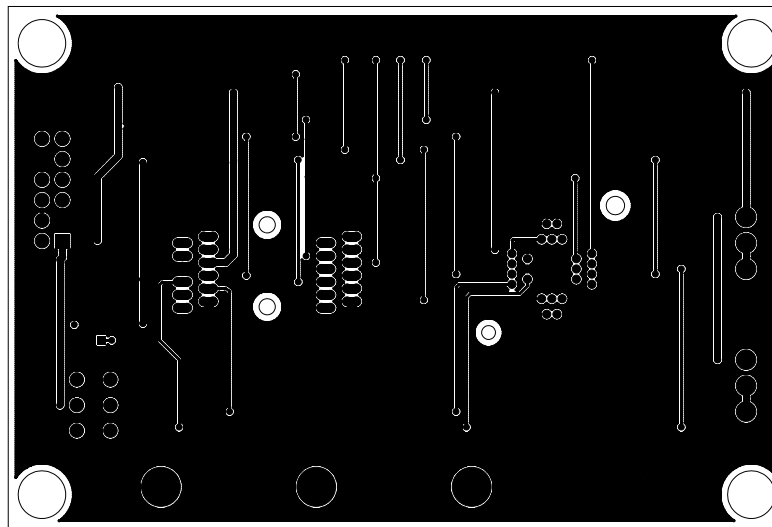
ECO	REV	DESCRIPTION	APPROVED	DATE
-	1	PRODUCTION	NATHAN E.	08-30-15


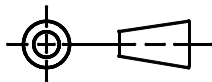


UNLESS OTHERWISE SPECIFIED DIMENSIONS ARE IN INCHES TOLERANCES ON ANGLE +/- 1° 0.XX" = +/- 0.01" 0.XXX" = +/- 0.005" INTERPRET DIM AND TOL PER ASME Y14.5M-1994	APPROVALS			 1630 MCCARTHY BLVD. MILPITAS, CA 95033 PH: (408) 432-1900 LTC CONFIDENTIAL FOR CUSTOMER USE ONLY		
		NAME	DATE			
	PCB DES.	R.S.	08-30-15	TITLE: TOP SOLDERMASK PROGRAMMING BOARD FOR HEX VOLTAGE SUPERVISOR WITH EEPROM		
	ENG	NATHAN E.	08-30-15			
THIRD ANGLE PROJECTION				SIZE	IC NO.	REV
				N/A	LTC2936	1
					DEMO CIRCUIT	
DO NOT SCALE DRAWING	SCALE: NONE			FILENAME: DC2450A		SHEET 6 OF 13

REVISION HISTORY

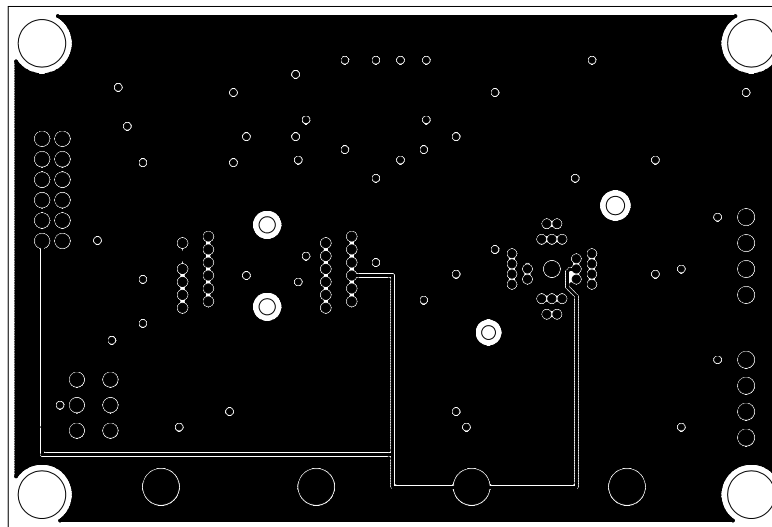
ECO	REV	DESCRIPTION	APPROVED	DATE
-	1	PRODUCTION	NATHAN E.	08-30-15


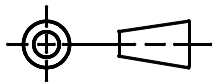


<p>UNLESS OTHERWISE SPECIFIED DIMENSIONS ARE IN INCHES TOLERANCES ON ANGLE +/- 1° 0.XX" = +/- 0.01" 0.XXX" = +/- 0.005" INTERPRET DIM AND TOL PER ASME Y14.5M-1994</p>	<p>APPROVALS</p>			 <p>1630 MCCARTHY BLVD. MILPITAS, CA 95033 PH: (408) 432-1900 LTC CONFIDENTIAL FOR CUSTOMER USE ONLY</p>		
		NAME	DATE			
	PCB DES.	R.S.	08-38-15	<p>TITLE: 1 - TOP COPPER <SIGNAL> PROGRAMMING BOARD FOR HEX VOLTAGE SUPERVISOR WITH EEPROM</p>		
	ENG	NATHAN E.	08-38-15			
THIRD ANGLE PROJECTION						
				SIZE	IC NO. LTC2936	REV
				N/A	DEMO CIRCUIT 2450A	1
DO NOT SCALE DRAWING	SCALE: NONE			FILENAME: DC2450A		SHEET 7 OF 13

REVISION HISTORY

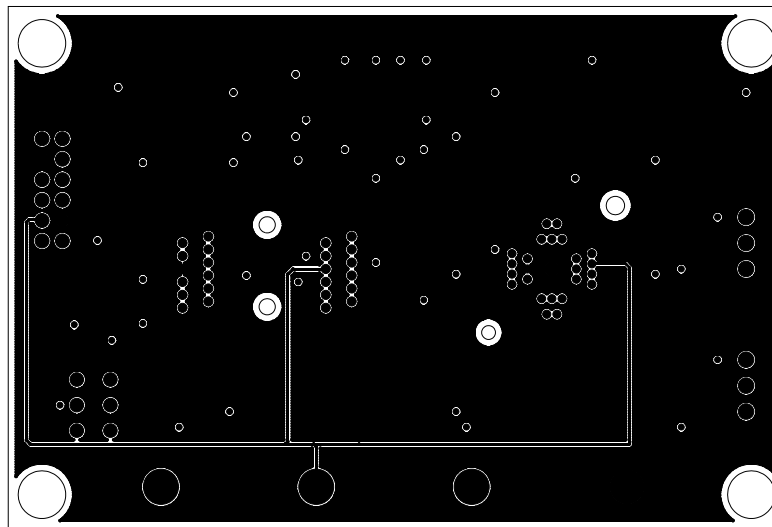
ECO	REV	DESCRIPTION	APPROVED	DATE
-	1	PRODUCTION	NATHAN E.	08-30-15


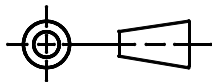


UNLESS OTHERWISE SPECIFIED DIMENSIONS ARE IN INCHES TOLERANCES ON ANGLE +/- 1° 0.XX" = +/- 0.01" 0.XXX" = +/- 0.005" INTERPRET DIM AND TOL PER ASME Y14.5M-1994	APPROVALS			 1630 MCCARTHY BLVD. MILPITAS, CA 95033 PH: (408) 432-1988 LTC CONFIDENTIAL FOR CUSTOMER USE ONLY		
	PCB DES. ENG	NAME NATHAN E.	DATE 08-30-15			
THIRD ANGLE PROJECTION 	TITLE: 2 - INNER COPPER (UPWR) PROGRAMMING BOARD FOR HEX VOLTAGE SUPERVISOR WITH EEPROM			SIZE N/A	IC NO. LTC2936 DEMO CIRCUIT 2450A	REV 1
DO NOT SCALE DRAWING	SCALE: NONE			FILENAME: DC2450A		SHEET 8 OF 13

REVISION HISTORY

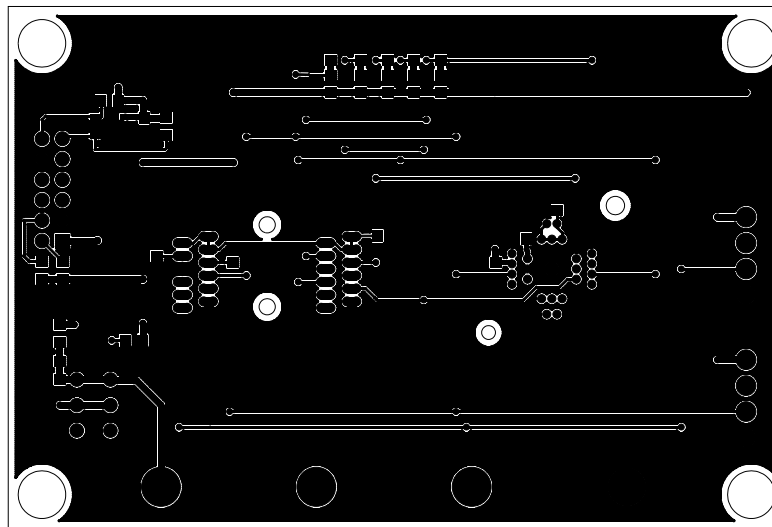
ECO	REV	DESCRIPTION	APPROVED	DATE
-	1	PRODUCTION	NATHAN E.	08-30-15


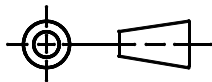


UNLESS OTHERWISE SPECIFIED DIMENSIONS ARE IN INCHES TOLERANCES ON ANGLE +/- 1° 0.XX" = +/- 0.01" 0.XXX" = +/- 0.005" INTERPRET DIM AND TOL PER ASME Y14.5M-1994	APPROVALS			 1630 MCCARTHY BLVD. MILPITAS, CA 95033 PH: (408) 432-1988 LTC CONFIDENTIAL FOR CUSTOMER USE ONLY
	PCB DES. ENG	NAME NATHAN E.	DATE 08-30-15	
THIRD ANGLE PROJECTION 	SIZE N/A	IC NO. LTC2936	DEMO CIRCUIT 2450A	REV 1
DO NOT SCALE DRAWING	SCALE: NONE		FILENAME: DC2450A	SHEET 9 OF 13

REVISION HISTORY

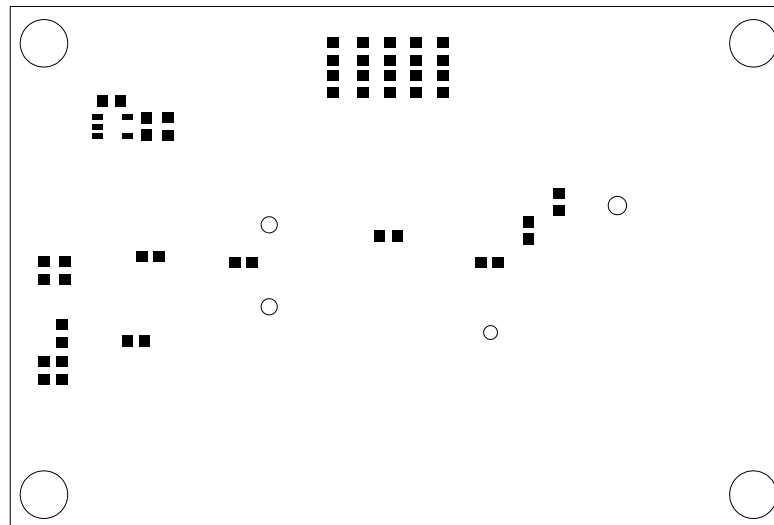
ECO	REV	DESCRIPTION	APPROVED	DATE
-	1	PRODUCTION	NATHAN E.	08-30-15


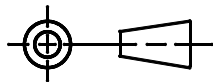


UNLESS OTHERWISE SPECIFIED DIMENSIONS ARE IN INCHES TOLERANCES ON ANGLE +/- 1° 0.XX" = +/- 0.01" 0.XXX" = +/- 0.005" INTERPRET DIM AND TOL PER ASME Y14.5M-1994	APPROVALS			 1630 MCCARTHY BLVD. MILPITAS, CA 95033 PH: (408) 432-1900 LTC CONFIDENTIAL FOR CUSTOMER USE ONLY	
	PCB DES.	R.S.	08-38-15		
THIRD ANGLE PROJECTION	ENG	NATHAN E.	08-38-15		
					
DO NOT SCALE DRAWING	SCALE: NONE			TITLE: 4 - BOTTOM COPPER (SIGNAL) PROGRAMMING BOARD FOR HEX VOLTAGE SUPERVISOR WITH EEPROM	
	SIZE N/A	IC NO. LTC2936 DEMO CIRCUIT 2450A	REV 1	FILENAME: DC2450A SHEET 10 OF 13	

REVISION HISTORY

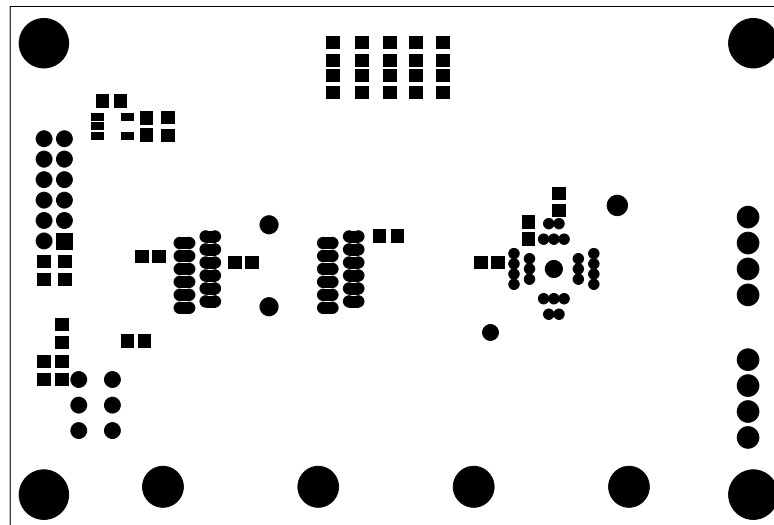
ECO	REV	DESCRIPTION	APPROVED	DATE
-	1	PRODUCTION	NATHAN E.	08-30-15


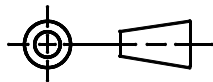


UNLESS OTHERWISE SPECIFIED DIMENSIONS ARE IN INCHES TOLERANCES ON ANGLE +/- 1° 0.XX" = +/- 0.01" 0.XXX" = +/- 0.005" INTERPRET DIM AND TOL PER ASME Y14.5M-1994	APPROVALS			 1630 MCCARTHY BLVD. MILPITAS, CA 95033 PH: (408) 432-1988 LTC CONFIDENTIAL FOR CUSTOMER USE ONLY	
		NAME	DATE		
	PCB DES.	R.S.	08-30-15	TITLE: BOTTOM PASTE PROGRAMMING BOARD FOR HEX VOLTAGE SUPERVISOR WITH EEPROM	
	ENG	NATHAN E.	08-30-15		
THIRD ANGLE PROJECTION					
					
DO NOT SCALE DRAWING	SCALE: NONE		SIZE	IC NO.	REV
			N/A	LTC2936 DEMO CIRCUIT 2450A	1
FILENAME: DC2450A			SHEET 11 OF 13		

REVISION HISTORY

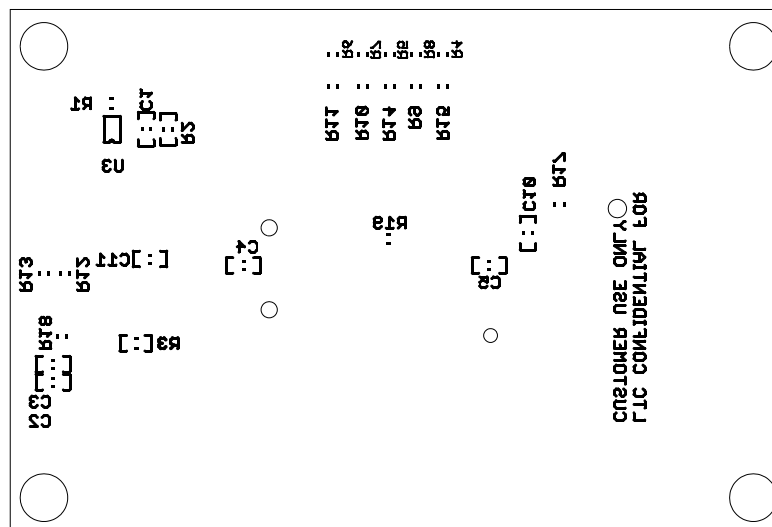
ECO	REV	DESCRIPTION	APPROVED	DATE
-	1	PRODUCTION	NATHAN E.	08-30-15


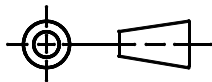


UNLESS OTHERWISE SPECIFIED DIMENSIONS ARE IN INCHES TOLERANCES ON ANGLE +/- 1° 0.XX" = +/- 0.01" 0.XXX" = +/- 0.005" INTERPRET DIM AND TOL PER ASME Y14.5M-1994	APPROVALS			 1630 MCCARTHY BLVD. MILPITAS, CA 95033 PH: (408) 432-1900 LTC CONFIDENTIAL FOR CUSTOMER USE ONLY			
		NAME	DATE				
	PCB DES.	R.S.	08-30-15				
	ENG	NATHAN E.	08-30-15				
THIRD ANGLE PROJECTION				TITLE: BOTTOM SOLDERMASK PROGRAMMING BOARD FOR HEX VOLTAGE SUPERVISOR WITH EEPROM			
					SIZE N/A	IC NO. LTC2936 DEMO CIRCUIT 2450A	REV 1
DO NOT SCALE DRAWING	SCALE: NONE			FILENAME: DC2450A		SHEET 12 OF 13	

REVISION HISTORY

ECO	REV	DESCRIPTION	APPROVED	DATE
-	1	PRODUCTION	NATHAN E.	08-30-15



UNLESS OTHERWISE SPECIFIED DIMENSIONS ARE IN INCHES TOLERANCES ON ANGLE +/- 1° 0.XX" = +/- 0.01" 0.XXX" = +/- 0.005" INTERPRET DIM AND TOL PER ASME Y14.5M-1994	APPROVALS			 1630 MCCARTHY BLVD. MILPITAS, CA 95033 PH: (408) 432-1900 LTC CONFIDENTIAL FOR CUSTOMER USE ONLY
	PCB DES. ENG	NAME NATHAN E.	DATE 08-30-15	
THIRD ANGLE PROJECTION 	SIZE N/A	IC NO. LTC2936 DEMO CIRCUIT 2450A	REV 1	DO NOT SCALE DRAWING
SCALE: NONE	FILENAME: DC2450A	SHEET 13 OF 13		