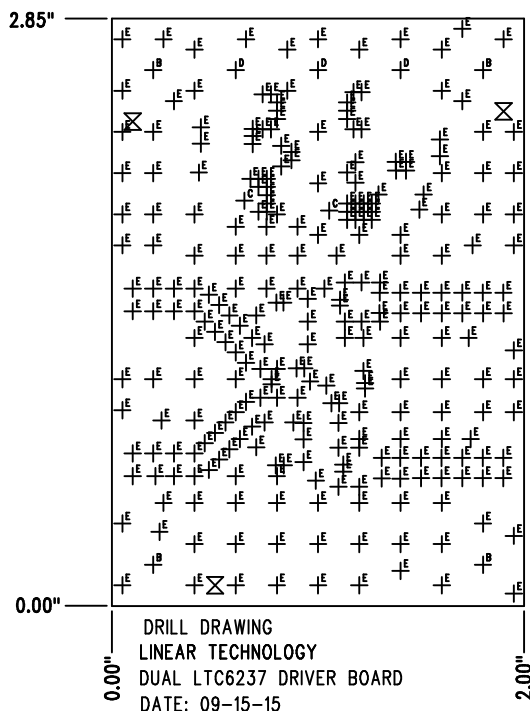
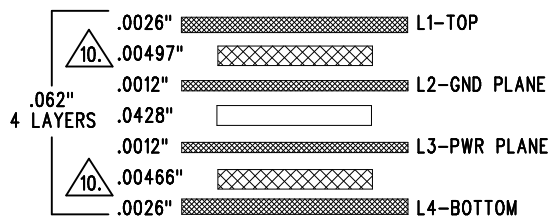


REVISION HISTORY				
ECO	REV	DESCRIPTION	APP. ENG.	DATE
-	0	1ST PROTOTYPE	D. STUETZLE	03-20-15



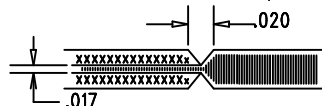
SIZE	QTY	SYM	PLATED	TOL
0.07	3	⊗	NO	+/-0.003
0.19	4	⊕ <sup>B</sup>	NO	+/-0.003
0.063	2	⊕ <sup>C</sup>	YES	+/-0.003
0.094	3	⊕ <sup>D</sup>	YES	+/-0.003
0.012	281	⊕ <sup>E</sup>	YES	+/-0.003

## LAYER STRUCTURE



## NOTES: UNLESS OTHERWISE SPECIFIED

- FAB PER IPC-A-600.
- MATERIAL: -LEAD FREE ASSEMBLY COMPLIANT, ISOLA FR-370HR OR EQUIVALENT.  
-FINISHED THICKNESS TO BE 0.062" +/- .005"  
-TOTAL OF 4 LAYERS WITH 2 OZ. CU ON THE OUTER LAYERS AND 1 OZ. CU ON THE INNER LAYERS.  
-FLAMMABILITY RATING: 94 V-0 MINIMUM.
- SIZE: CUT TO DIMENSIONS AND TOLERANCES SHOWN.  
0.00" ARE PRIMARY DATUMS.
- DRILLING: -DRILL HOLES PER SCHEDULE. PLATE THROUGH HOLES WITH COPPER, 0.001" THICK MIN.  
-ALL HOLE SIZES ARE SPECIFIED AFTER PLATING.  
-HOLE LOCATION TOLERANCES ARE +/-0.003" IN RELATION TO CENTER
- FINISH: -SMOBC USING LPI BOTH SIDES, COLOR GREEN.  
-GOLD IMMERSION BOTH SIDES.  
-FOR SILKSCREENS: USE WHITE NON-CONDUCTIVE INK.
- DO NOT ALTER ARTWORK e.g. TO ADD LOGO OR DATE CODE.  
PAD SIZE CAN BE MODIFIED TO MEET END FINISH.
- PCBS ARE TO BE RoHS COMPLIANT.
- SCORING FOR PANELIZED PCB (PRODUCTION FAB ONLY):



- CONTROLLED 50 OHM +/-10% IMPEDANCE FOR LAYERS 1-2 USING 0.009" TRACE AT 2GHz FREQ.

10. SUBJECT TO CHANGE BY MANUFACTURER, DEPENDING ON DIELECTRIC CONSTANT DEVIATIONS. PLEASE CONSULT LTC.

UNLESS OTHERWISE SPECIFIED DIMENSIONS ARE IN INCHES TOLERANCES: 0.XX" = ±0.01" 0.XXX" = ±0.005" INTERPRET DIM AND TOL PER ASME Y14.5M-1994 THIRD ANGLE PROJECTION		APPROVALS				1630 MCCARTHY BLVD MILPITAS, CA 95035 PH: (408)432-1900 www.linear.com LTC CONFIDENTIAL- FOR CUSTOMER USE ONLY	
		PCB DES.	D. STUETZLE			TITLE: FABRICATION DRAWING	
		APP ENG.	D. STUETZLE			DUAL LTC6237 DRIVER AMP	
						SIZE	IC NO. LTC6237
						N/A	DEMO CIRCUIT 2402A
							REV 2
		SCALE = NONE		FILENAME: DC2402A.PCB		SHT 1 OF 1	