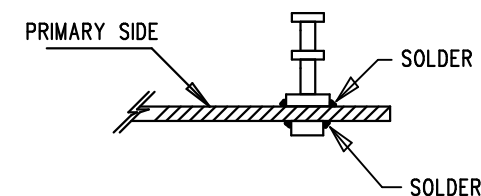


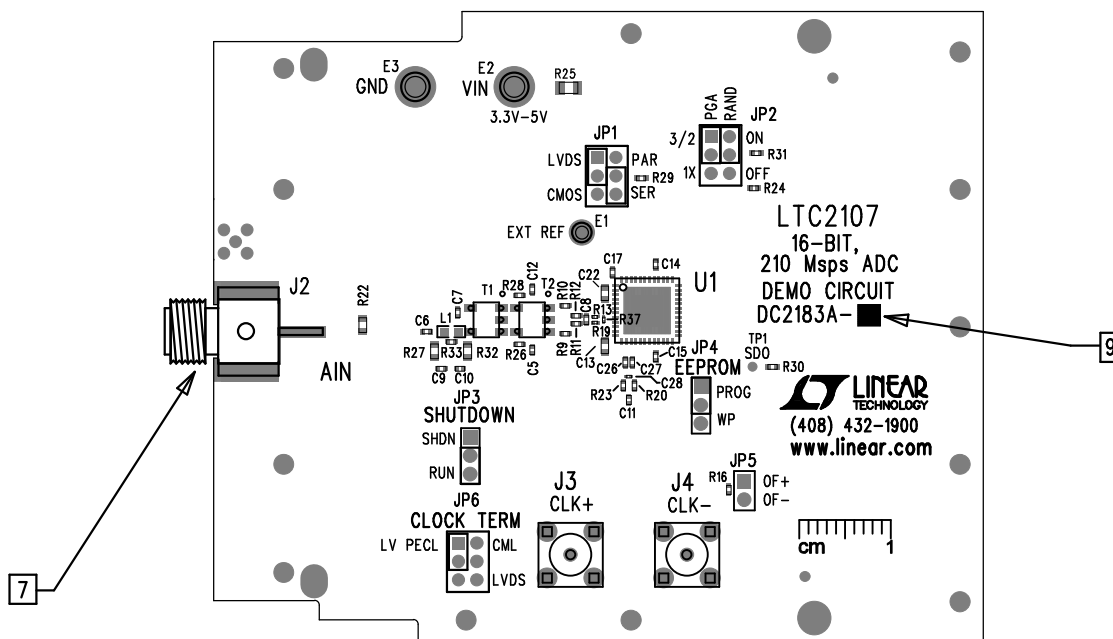
REVISION HISTORY				
ECO	REV	DESCRIPTION	APP. ENG.	DATE
-	2	PRODUCTION	C.MAYOTT	03-18-14


NOTES: UNLESS OTHERWISE SPECIFIED

1. WORKMANSHIP SHALL BE IN ACCORDANCE WITH IPC-A-610.
2. INSTALL SHUNTS ON JP1- JP4, JP6 AS DEPICTED.
NO SHUNT INSTALLED ON JP5.
3. OPTIONAL PARTS ARE SPECIFIED ON THE BILL OF MATERIALS.
LAND PATTERNS FOR THESE PARTS SHALL BE FREE OF SOLDER.
MASK THE SOLDER STENCIL AT THESE LOCATIONS.
4. DEPANELIZE BOARDS AFTER ASSEMBLY AND ROUTE-OUT THE BREAKOUT TABS ON ALL BOARD EDGES.
5. ASSEMBLY PROCESS SHALL INCLUDE SMD REFLOW SOLDER BOTH SIDES.
MAXIMUM TEMPERATURE SHALL NOT EXCEED 240 DEGREES CELSIUS.
6. INSTALL TURRETS E1-E3 AS SHOWN:



7. INSTALL J2 ON PRIMARY SIDE, MOUNTED INSIDE CUTOUT AREAS AS DEPICTED.
8. INSTALL J3-J4 ON PRIMARY SIDE.
9. MARK EACH ASSEMBLY TYPE WITH BLACK PERMANENT MARKER.
10. DO NOT APPLY ANY KIND OF ASSEMBLY OR QA STAMP TO BOARD.



APPROVALS		 <div> 1630 MCCARTHY BLVD MILPITAS, CA 95035 PH: (408)432-1900 www.linear.com LTC CONFIDENTIAL- FOR CUSTOMER USE ONLY </div>	
PCB DES.	M.HAWKINS		
APP ENG.	C. MAYOTT	TITLE: ASSEMBLY DRAWING, PRIMARY SIDE 16-BIT, 210 Msps ADC	
		SIZE N/A	IC NO. LTC2107 DEMO CIRCUIT 2183A
		SCALE = NONE	REV. 2 FILENAME: DC2183A-2.PCB SHT 1 OF 2